



Strong As An Ox™

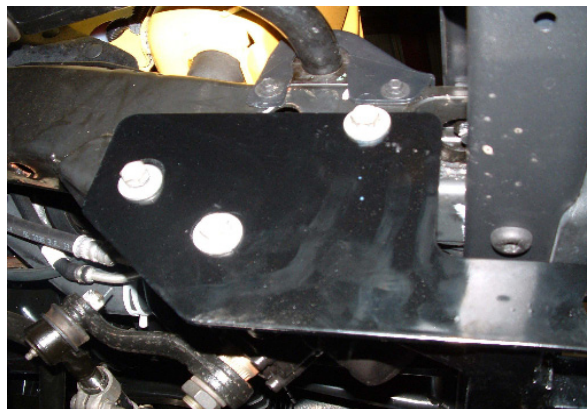
Serial No.

BX1124 Installation Instructions
2003-06 Jeep Wrangler with Double and Single Tube Bumper
Passenger Side Steering

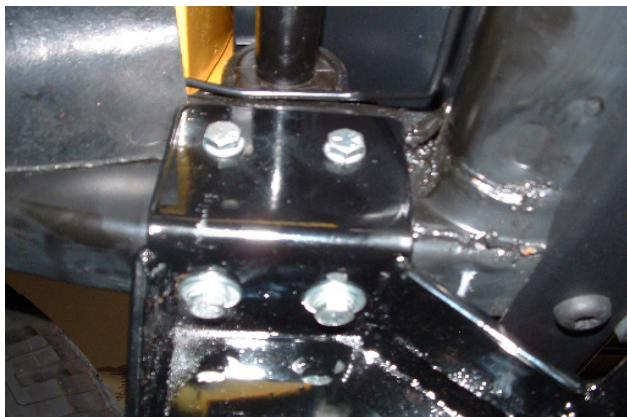
Holes need to be drilled. The BX8869 is available. The attachment tabs are centered at 24 inches and at 15 inches height.



1. Remove the three metric bolts with 16MM socket while having someone hold the gear box and the idler arm.



2. Hold baseplate (item 1) into place and insert the three existing bolts on passenger's side through baseplate, frame and gear box, tighten. **Be sure and use Loctite on all bolts before tightening.**



3. Clamp baseplate on driver's side with large vise grip and drill four holes with 13/32" drill bit.



4. Using items 2, 3, and 4, insert item 4 into frame to align with holes, then tighten all bolts. **Be sure to use Loctite on all bolts before tightening.**



Strong As An Ox™

Tools Required

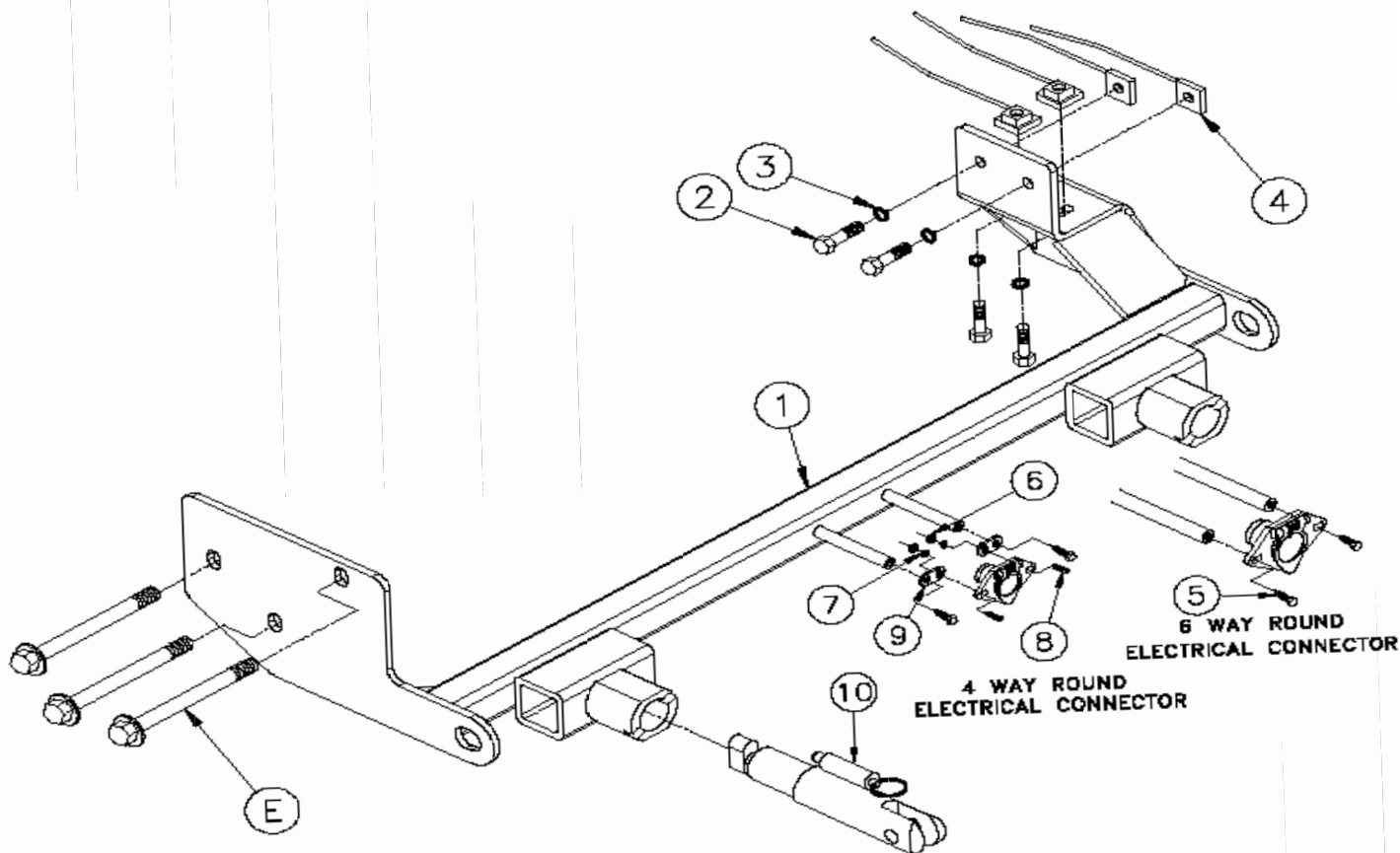
7MM Wrench
16MM Socket

Loctite Blue
9/16" Socket

13/32" Drill Bit
Vise Grips

Parts List

Ref. No.	Qty.	Part No.	Description
1	1	61-6157	Weldment, Base Plate, BX1124
2	4	201-0440	3/8-16 x 1 1/2 Hex Bolt, Grd. 5, ZP
3	4	203-0010	3/8 Lock Washer, ZP
4	4	61-5208	Weldment, 3/8-16, Nut Plate, with 14" Wire
5	2	201-0979	#12-14 x 1" Self Drilling Screw, ZP
6	2	202-0047	#10-32 Hex Nut
7	2	203-0054	#10 Lock Washer
8	2	201-0192	#10-32 x 1/2 Slot, Rd. Hd. Screw
9	2	101-5822	Adapter, 4 Way Connector
10	2	62-3468	Attachment Tab, SF/SB, ZP
	2	290-0437	Cap Plug, Black (Not Shown)



IMPORTANT: Use only genuine factory replacement parts on your Base Plate. Do not substitute homemade or nontypical parts. If a bolt is lost or in need of replacement, for your safety and the preservation of your Base Plate, be sure to use a replacement bolt of the same grade (Usually Grade 5, refer to parts list). Repair parts may be ordered through your nearest **Blue Ox** dealer or distributor.