

INSTALLATION INSTRUCTIONS

⚠ WARNING: DO NOT EXCEED PRODUCT RATING OR TOW VEHICLE LAMP LOAD RATING, WHICHEVER IS LOWER

APPLICATIONS

Make	Model
Chevrolet	City Express
Nissan	NV200

WIRING LOCATION GUIDE

SUVs, MINI & FULL-SIZED VANS (S)

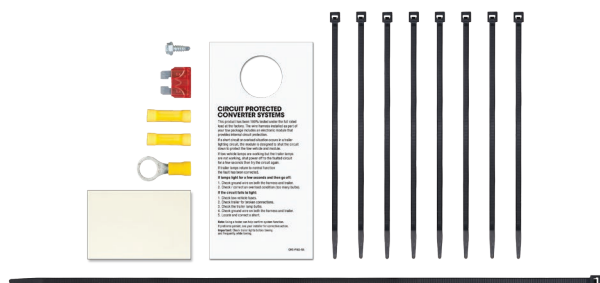
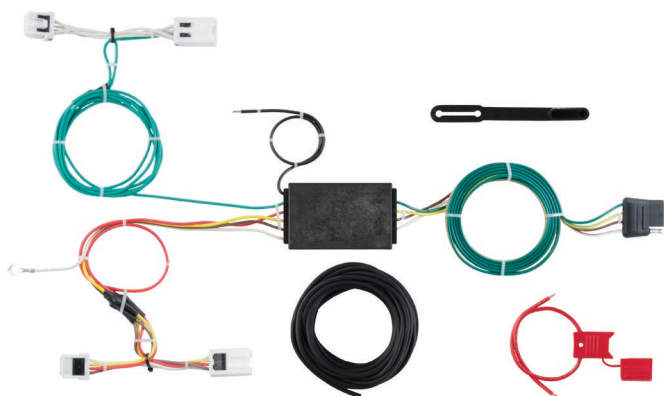
Representative vehicle shown below

S3 - Behind driver side rear access panel

S4 - Behind passenger side rear access panel



CUSTOM WIRING HARNESS



NOTICE

All steps must be followed to ensure the wiring harness will function properly. Once installed, test for proper function by using a test light or connecting a properly wired trailer.

TOOLS NEEDED

- Ratchet
- 10mm socket
- Phillips screwdriver
- Panel trim removal tool
- Wire stripper
- Wire crimper
- Cutting tool

⚠ WARNING

The battery connection must be fuse-protected, 10-amp max. Exceeding the product rating can cause loss of warranty, overheating and potential fire. Do not exceed product rating or tow vehicle lamp load rating, whichever is lower.

Signal Circuits - 3.0 amps per side
Tail / Running Circuits - 6.0 amps total

Check vehicle owner's manual or contact the vehicle manufacturer for more information.

INSTALLATION / SAFETY INSTRUCTIONS

Step 1

Locate the vehicle battery on the driver side under the hood and disconnect the negative battery terminal.

Step 2

Open the vehicle tailgate. Remove the fasteners securing the rear scuff panel and floor cover (A). Remove the scuff panel by pulling up (B).

Step 3


Starting on the driver side, remove the two Phillips screws securing the side access panel and remove the panel (C).

Step 4

Behind the removed panel locate the vehicle taillight wiring harness connectors (D). The connectors will be similar to those on the custom wiring harness. Separate the connectors from the taillight housing taking care not to damage the locking tabs (E).

Step 5

Insert the custom wiring harness end with yellow wire between the separated connectors. Make sure the connectors are fully inserted with locking tabs in place (F).

 **WARNING:** Check for miscellaneous items that may be hidden behind or under any surface before drilling to avoid damage and / or personal injury.

Step 6

Locate a suitable grounding point near the connector such as an existing screw with nut in the vehicle frame or drill a 3/32" pilot hole for the provided screw. The area should be free of rust, dirt and paint. Secure the white ground wire using the ring terminal and provided screw.

Step 7

Route the custom wiring harness end with the green wire to the passenger side under the scuff panel and floor covering. Repeat steps 3-5 on the passenger side using the harness end with the green wire.

Step 8

Locate a flat spot inside the vehicle, near the taillight. Adhere the black converter box using the provided double-sided tape (G).

Step 9

Route the black power wire from the vehicle battery as shown on the included CME-PCL-INS sheet.

Step 10

Install 10 amp fuse into the red fuse holder on the wiring harness.

Step 11

When in use, route the 4-flat to the center of the vehicle. When not in use, roll up and store in a convenient, out of the way location. Secure any loose wires with the provided cable ties.

Step 12

Reinstall all items removed during install and reconnect the negative battery terminal. Install the provided 4-flat dust cover to help prevent corrosion.

