

INSTALLATION INSTRUCTIONS

⚠ WARNING: DO NOT EXCEED PRODUCT RATING OR TOW VEHICLE LAMP LOAD RATING, WHICHEVER IS LOWER

APPLICATIONS

Make	Model
Buick	Rendezvous
Pontiac	Aztek

WIRING LOCATION GUIDE

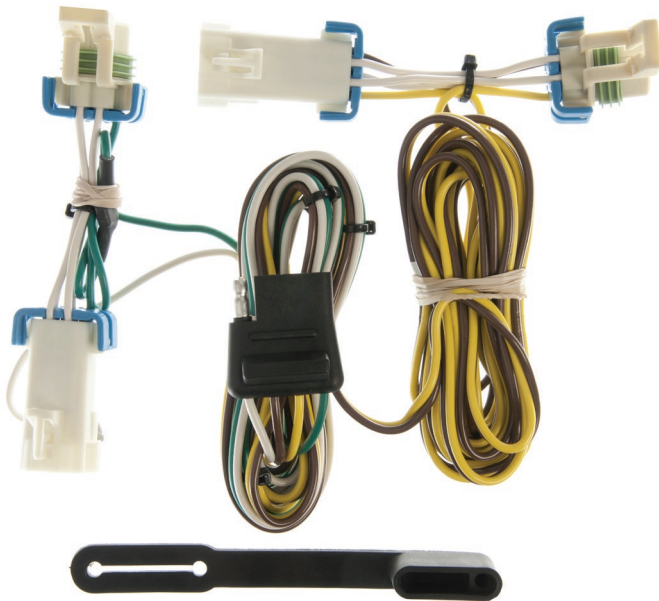
SUVs, MINI & FULL-SIZED VANS (S)

Representative vehicle shown below

S1 - Behind driver side taillight housing

S2 - Behind passenger side taillight housing

CUSTOM WIRING HARNESS



NOTICE

All steps must be followed to ensure the wiring harness will function properly. Once installed, test for proper function by using a test light or connecting a properly wired trailer.

TOOLS NEEDED

Phillips screwdriver

Flat blade screwdriver

Panel trim removal tool

⚠ WARNING

Exceeding the product rating can cause loss of warranty, overheating and potential fire. Do not exceed product rating or tow vehicle lamp load rating, whichever is lower.

Check vehicle owner's manual or contact the vehicle manufacturer for more information.

INSTALLATION / SAFETY INSTRUCTIONS

Step 1

Open the rear door on the vehicle. Remove the rear storage compartment doors and threshold plate (A,B).

Step 2

Remove both taillight assemblies by removing the two screws on the inboard side of each taillight. Pull the rubber grommets away from the vehicle body to expose the electrical connectors (C). Gently lift the locking tabs and separate the electrical connectors. Take care not to damage the alignment tabs on the back (D,E).

Step 3

Remove the two cargo hold brackets securing the rear side-trim panels on both sides of the vehicle.

Step 4


Pull back the rear side-trim panels. Starting on the passenger side, route the connector with the green wire up through the storage compartment, behind the rear trim panel, and out the passenger-side rear taillight. The access hole to the taillight opening will have a piece of gray foam near it. Insert the custom wiring harness between the separated connectors. Make sure the connectors are fully inserted with locking tabs in place.

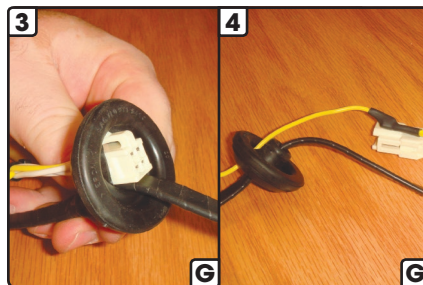
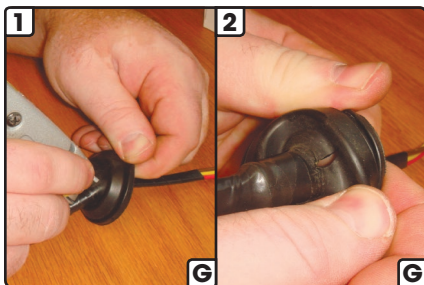
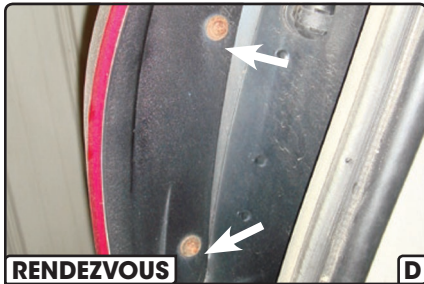
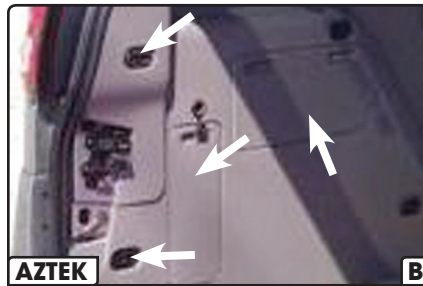
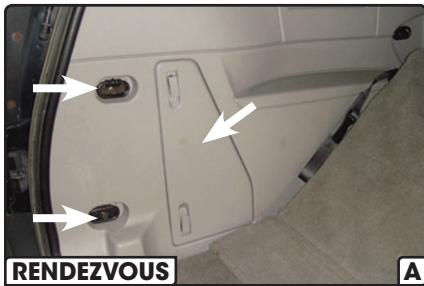
Step 5

With the vehicle wiring and grommets exposed, slit the grommets with a utility knife as needed to allow the custom wiring harness to pass through (F,G). Place the custom wiring harness in the slit of the grommet. Reseat the grommet and use the provided sealant to seal the cut in the grommet and around all the wires (H).

Step 6

Locate a suitable grounding point near the connector such as an existing screw with nut in the vehicle frame or drill a 3/32" pilot hole for the provided screw. The area should be free of rust, dirt and paint. Secure the white ground wire using the ring terminal and provided screw.

 **WARNING:** Check for miscellaneous items that may be hidden behind or under any surface before drilling to avoid damage and / or personal injury.



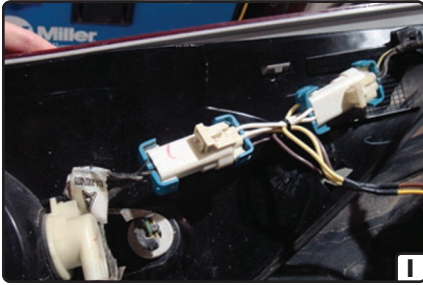
INSTALLATION / SAFETY INSTRUCTIONS

Step 7

Route the connectors with the yellow and brown wires through the passenger side storage compartment and behind the passenger-side rear trim panel. Continue routing underneath the threshold, behind the driver-side rear trim panel and out the driver-side taillight. Plug the custom wiring harness between the separated connectors. Make sure the connectors are fully inserted with locking tabs in place (I).

Step 8

Test the installation with a test light or trailer.



Step 9

When in use, route the 4-flat to the center of the vehicle and out of the trunk. When not in use, roll up and store in a convenient, out of the way location inside the trunk. Secure any loose wires with the provided cable ties.

Step 10

Reinstall all items removed during install. Install the provided 4-flat dust cover to help prevent corrosion.