

INSTALLATION MANUAL

Level of Difficulty

Easy

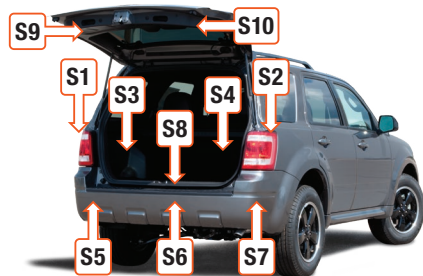
Installation difficulty levels are based on time and effort involved and may vary depending on the installer level of expertise, condition of the vehicle and proper tools and equipment.

Wiring Location(s)

S5 and S6

Wiring Location Guide* for SUVs and Vans (S)

S1	Behind driver side taillight housing
S2	Behind passenger side taillight housing
S3	Behind driver side rear access panel
S4	Behind passenger side rear access panel
S5	Behind driver side rear bumper
S6	Behind center of rear bumper
S7	Behind passenger side rear bumper
S8	Under rear floor panel
S9	Behind driver side rear access panel
S10	Behind passenger side rear access panel

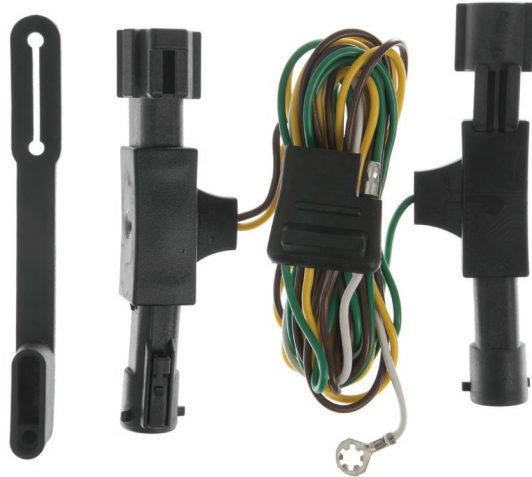


* Representative vehicle shown

WARNING

Do not exceed product rating or tow vehicle lamp load rating, whichever is lower.

Product Photo



Hardware Photo



NOTICE

Before you begin installation, read all instructions thoroughly.

Proper tools will improve the quality of installation and reduce the time required.

All steps must be followed to ensure the product will function properly. Once installed, test for proper function by using a test light or connecting a properly wired trailer.

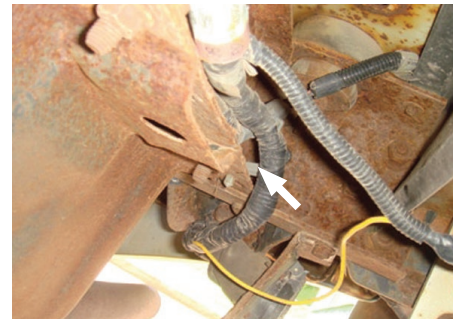
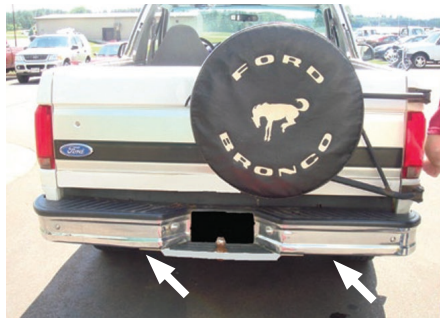
Maintenance

Periodic inspection of all wires and connections should be performed to ensure there is no visible damage or loose connections.

Step 1

Locate the vehicle's taillight wiring harness connectors underneath the vehicle, on both the driver and passenger side behind the rear bumper. The connectors will be similar to those on your new custom wiring product. Separate the connectors from the taillight housing taking care not to damage the locking tabs.

Insert the custom wiring end with yellow wire between the separated connectors. Make sure the connectors are fully inserted with locking tabs in place.



Step 2

Route the custom wiring end with the green wire to the passenger side.
Repeat steps 1 through 2 on the passenger side using the wiring end with the green wire.

When in use, route the 4-flat to the center of the vehicle and out of the trunk.
When not in use, roll up and store in a convenient, out of the way location inside the trunk. Secure any loose wires with the provided cable ties.