

# INSTALLATION MANUAL

# 13583

## Level of Difficulty

Easy

Installation difficulty levels are based on time and effort involved and may vary depending on the installer level of expertise, condition of the vehicle and proper tools and equipment.

## Weight Carrying Capacity

Gross trailer weight (GTW)	2,000 lbs.
Tongue weight (TW)	300 lbs.

## Parts List

Item	Qty	Description
1	1	Trailer hitch
2	4	Carriage bolt, 1/2"-13 x 1-3/4"
3	4	Square-hole spacer, 1/4" x 1" x 2-1/2"
4	4	Serrated-flange nut, 1/2"-13,
5	4	Fishwire, 1/2"
6	1	Cable tie, 15"

## Tools Required

Ratchet	Die grinder
Socket, 19mm	Utility knife
Socket extension, 8"	Exhaust hanger removal pliers
Torque wrench	Safety glasses
Flathead screwdriver or panel trim tool	--

\* For a tools reference guide visit [curtmfg.com/trailer-hitch-installation](http://curtmfg.com/trailer-hitch-installation)

## ⚠ WARNING

Never exceed the vehicle manufacturer's recommended towing capacity.

## Product Photo



## NOTICE

Visit [www.curtmfg.com](http://www.curtmfg.com) for a full-color copy of this instruction manual, as well as helpful videos, guides and much more!

Before you begin installation, read all instructions thoroughly.

Proper tools will improve the quality of installation and reduce the time required.

Periodic inspection of the trailer hitch should be performed to ensure all mounting hardware remains tight and structural components are secure.

To help prevent damage to the product or vehicle, refer to the specified torque specifications when securing hardware during the installation process.

## SAFETY INSTRUCTIONS

Safety glasses should be worn at all times while installing this product.

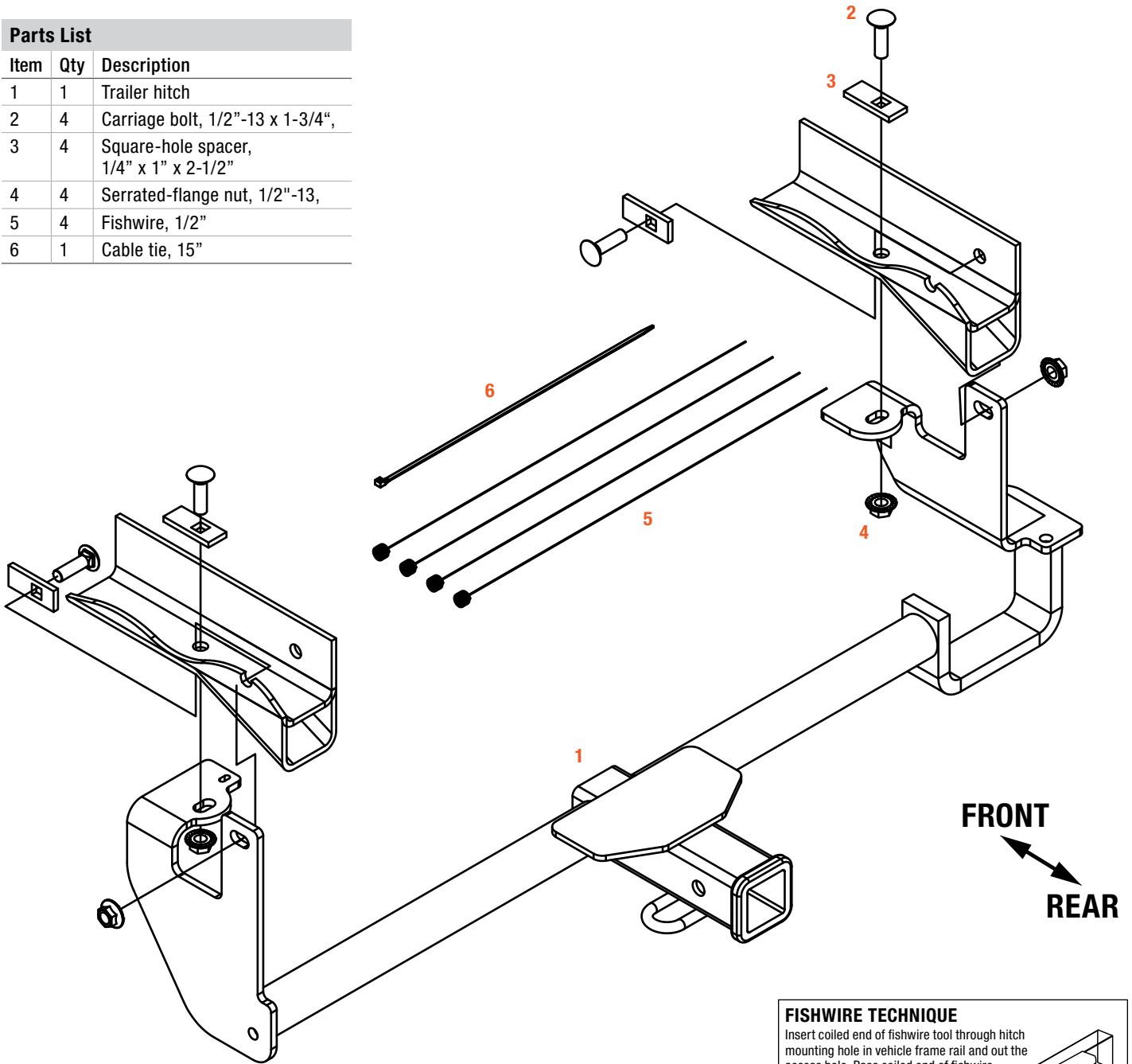
## Product Registration and Warranty

CURT stands behind our products with industry-leading warranties. To get copies of the product warranties, register your purchase or provide feedback, visit: [warranty.curtgroup.com/surveys](http://warranty.curtgroup.com/surveys)

# ASSEMBLY

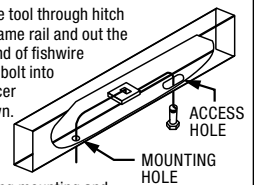
## Parts List

Item	Qty	Description
1	1	Trailer hitch
2	4	Carriage bolt, 1/2"-13 x 1-3/4"
3	4	Square-hole spacer, 1/4" x 1" x 2-1/2"
4	4	Serrated-flange nut, 1/2"-13,
5	4	Fishwire, 1/2"
6	1	Cable tie, 15"



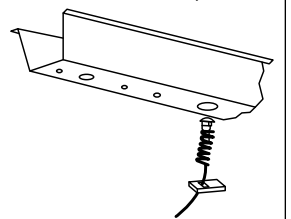
### FISHWIRE TECHNIQUE

Insert coiled end of fishwire tool through hitch mounting hole in vehicle frame rail and out the access hole. Pass coiled end of fishwire through spacer and thread bolt into coil. Kink wire to keep spacer separate from bolt as shown. Pull fishwire, spacer and bolt through frame and out mounting hole. Use fishwire to guide hitch during mounting and prevent loss of bolt or spacer inside frame rail.



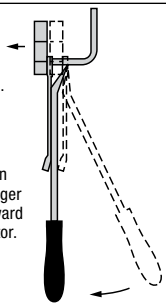
### REVERSE PULL FISHWIRE TECHNIQUE

Attach the fishwire to the carriage bolt and slide the spacer onto the fishwire. Push the bolt through the hole followed by the spacer, as shown. Pull the bolt back into position, protruding from the frame.

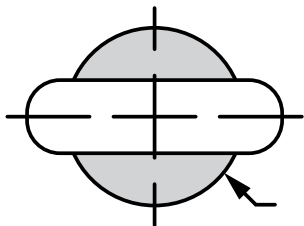


### RUBBER ISOLATOR REMOVAL DIAGRAM

This technique can be used if exhaust hanger removal pliers are not available. Using a 5/8" open end wrench, slide the wrench up to the rubber isolator, cradling the hanger rod as shown. Place the flat edge of a pry bar between the wrench and the hanger stop or hanger rod. Then simply rotate the pry bar toward the wrench to remove the rubber isolator. **Note:** Using a lubricant or soapy water on the hanger rod and the rubber isolator helps removal.



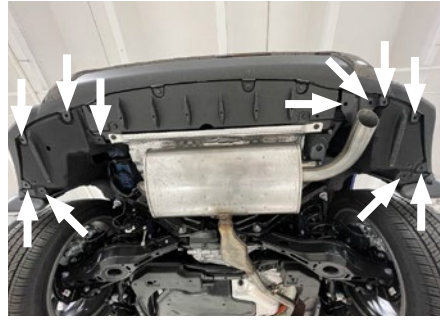
### HOLE ENLARGEMENT



### Step 1

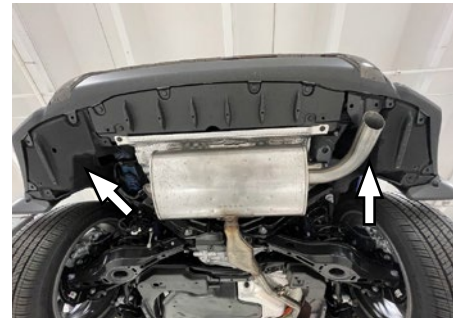
Using a panel trim removal tool, remove five plastic rivets from the driver side and six from the passenger side.

Save two plastic rivets to secure the fascia tab after the hitch is mounted.



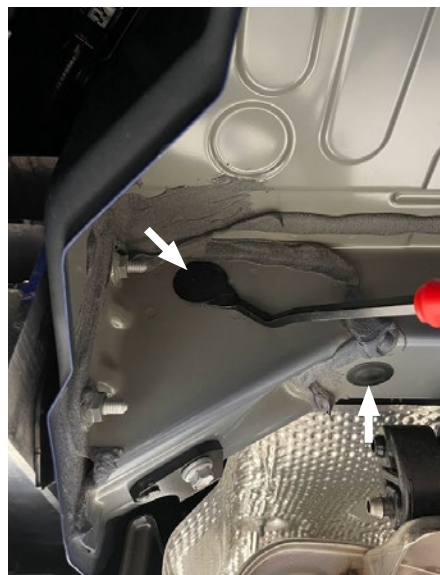
### Step 2

Remove the plastic rivet on the underside of the fascia tab and remove plastic retainers from the studs. Firmly pull down on the panels to release and remove them from the studs.



### Step 3

Remove the two access hole covers from the passenger frame rail using the panel trim removal tool. Remove the plastic cover and carbon canister tube from the access holes on the driver-side frame rail. If the frame rail caulking interferes with the hitch installation, it may be required to remove caulking using a utility knife.



#### Step 4

Using a die grinder, enlarge the forward-most access holes on each frame rail. If the exhaust does not allow adequate access, it may be required to temporarily lower the exhaust using the exhaust hanger removal tool.



#### Step 5

Reinstall the fascia flap using the two plastic rivets from step 1.



#### Step 6

Using the fishwire (#5), pull two 1/2" carriage bolts (#2) and square hole spacers (#3) into the rear access holes, leaving the fishwire attached. Using the reverse fishwire technique, pull two 1/2" carriage bolts and square hole spacers into the two forward access holes. If the exhaust was lowered in previous steps, reinstall it back to its original position.



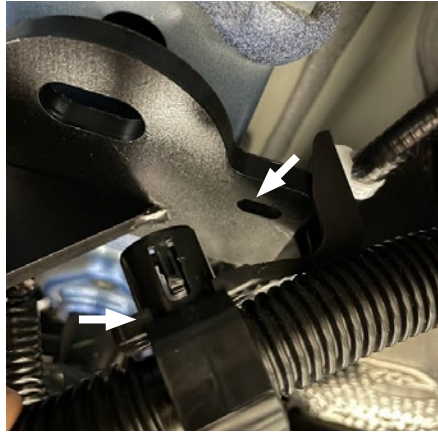
#### Step 7

Using the attached fishwire as a guide, raise the trailer hitch into position. Center the hitch on the vehicle. Remove the fishwire and loosely secure the hitch to the vehicle with the provided 1/2" serrated-flange nuts (#4).



## Step 8

Torque all 1/2" fasteners to 110 ft-lbs using a 19mm socket and torque wrench. Secure the carbon canister tube to the tab in the driver-side plate using supplied cable tie (#6).



## Final Installed Image



## TOWING BASICS & SAFETY INFORMATION

For information on safely towing your trailer, visit [curtmfg.com/understanding-towing](https://curtmfg.com/understanding-towing).