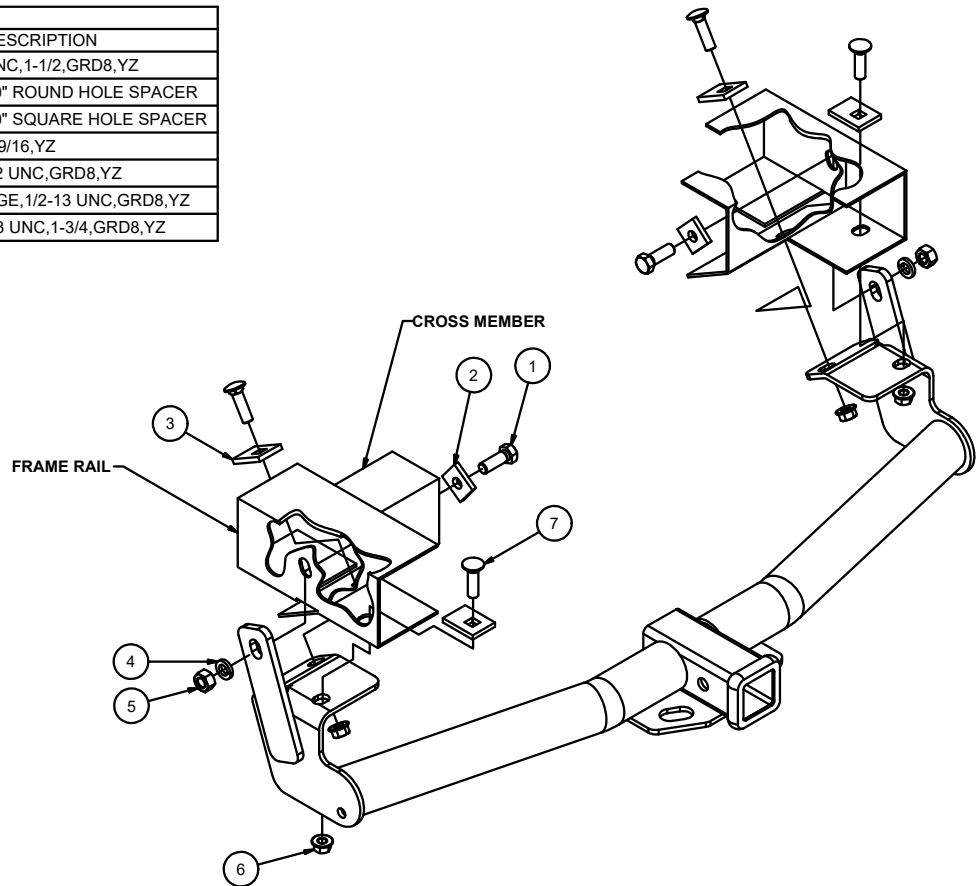


13540**1991-2001 FORD EXPLORER 4 DR, 1991-2003 FORD EXPLORER SPORT 2 DR
1991-1994 MAZDA NAVAJO SUV, 1996-2001 MERCURY MOUNTAINEER****9/16/2020****GROSS LOAD CAPACITY WHEN USED AS A WEIGHT CARRYING HITCH: 4,000 LBS. TRAILER WEIGHT & 400 LBS. TONGUE WEIGHT.
GROSS LOAD CAPACITY WHEN USED AS A WEIGHT DISTRIBUTION HITCH: 6,000 LBS. TRAILER WEIGHT & 600 LBS. TONGUE WEIGHT*******DO NOT EXCEED VEHICLE MANUFACTURER'S RECOMMENDED TOWING CAPACITY.*******HAVING INSTALLATION QUESTIONS? CALL TECHNICAL SUPPORT AT 1-877-287-8634**

Parts List			
ITEM	QTY	PART NUMBER	DESCRIPTION
1	2	10-10476	HHCS,9/16-12 UNC,1-1/2,GRD8,YZ
2	2	CM-SP25	.250 x 1.38 x 1.50" ROUND HOLE SPACER
3	4	CM-SP1	.250 x 1.50 x 2.00" SQUARE HOLE SPACER
4	2	30-00194	WASHER,LOCK,9/16,YZ
5	2	20-00179	NUT,HEX,9/16-12 UNC,GRD8,YZ
6	4	20-00062	NUT, SER-FLANGE,1/2-13 UNC,GRD8,YZ
7	4	10-10272	BOLT,CAR,1/2-13 UNC,1-3/4,GRD8,YZ

FRONT
↙
REAR**HITCH WEIGHT: 30 LBS.****INSTALL TIME**

PROFESSIONAL: 10 MINUTES

NOVICE (DIY): 25 MINUTES

INSTALL NOTES:**NO DRILLING REQUIRED**

INSTALLATION STEPS

- 1) POSITION HITCH AGAINST THE BOTTOM AND SIDES OF THE VEHICLE FRAME. LINE UP THE HOLE IN EACH OF THE HITCH FRAME BRACKETS WITH THE EXISTING HOLES IN THE VEHICLE FRAME, JUST FORWARD OF THE BUMPER BRACKETS.
- 2) PLACE A 9/16" BOLT INTO THE HITCH FRAME BRACKET AND VEHICLE SIDE FRAME. (Both sides) LOOSELY SECURE HITCH ASSEMBLY TO FRAME USING LOCK WASHER AND HEX NUT.
- 3) ASSEMBLE A 1/2" CARRIAGE BOLT INTO A SQUARE HOLE SPACER. POSITION THESE ASSEMBLIES SO THAT THE BOLT WILL DROP DOWN THROUGH THE EXISTING HOLES IN VEHICLE CROSS MEMBER AND SIDE FRAME.
- 4) PUSH THE HITCH ASSEMBLY UP AGAINST THE BOTTOM OF THE CROSS MEMBER AND END OF VEHICLE FRAME SO THAT THE PREVIOUSLY INSTALLED CARRIAGE BOLT WILL DROP DOWN THROUGH HOLES IN FRAME BRACKETS. TIGHTEN THE BOLTS IN THE END OF EACH FRAME FIRST. THEN TIGHTEN THE REMAINING BOLTS IN THE CROSS MEMBER. TIGHTEN THE 9/16 ATTACHMENT BOLTS IN THE SIDE OF THE FRAME LAST.

1994 and Prior Models:

- 5) USING THE HOLE IN THE HITCH BRACKET AS A TEMPLATE, DRILL 1/2" HOLE THROUGH THE FRAME RAILS.
- 6) INSTALL HITCH-FRAME FASTENERS AS SHOWN.

1995 & Later Models:

- 7) INSTALL HITCH-FRAME FASTENERS AS SHOWN.
- 8) TORQUE THE 1/2" HARDWARE TO 110 LB/FT, TORQUE THE 9/16" HARDWARE TO 150 LB/FT.

**PERIODICALLY CHECK THIS RECEIVER HITCH TO ENSURE THAT ALL FASTENERS
ARE TIGHT AND THAT ALL STRUCTURAL COMPONENTS ARE SOUND.**

Curt Manufacturing Inc., warrants this product to be free of defects in material and/or workmanship at the time of retail purchase by the original purchaser. If the product is found to be defective, Curt Manufacturing Inc., may repair or replace the product, at their option, when the product is returned, prepaid, with proof of purchase. Alteration to, misuse of, or improper installation of this product voids the warranty. Curt Manufacturing Inc.'s liability is limited to repair or replacement of products found to be defective, and specifically excludes liability for incidental or consequential loss or damage.