

# INSTALLATION MANUAL

# 13478

## Level of Difficulty

Easy

Installation difficulty levels are based on time and effort involved and may vary depending on the installer level of expertise, condition of the vehicle and proper tools and equipment.

## Weight Carrying Capacity

Gross trailer weight (GTW)	4,000 lbs.
Tongue weight (TW)	600 lbs.

## Parts List

Item	Qty	Description
1	6	Hex bolt, M12-1.25 x 40mm, CL8.8
2	6	Conical-toothed washer, 1/2"

## Tools Required

Paint marker	Socket extension, 6"
Exhaust hanger removal tool	Torque wrench
Ratchet	Tape measure
Shears	Trim panel pry tool
Socket, 3/4"	--

\* For a tools reference guide visit [curtmfg.com/trailer-hitch-installation](http://curtmfg.com/trailer-hitch-installation)

## ⚠ WARNING

Never exceed the vehicle manufacturer's recommended towing capacity.

## Product Photo



## NOTICE

Visit [www.curtmfg.com](http://www.curtmfg.com) for a full-color copy of this instruction manual, as well as helpful videos, guides and much more!

Before you begin installation, read all instructions thoroughly.

Proper tools will improve the quality of installation and reduce the time required.

This installation requires:

- Lowering of the exhaust
- Part trimming

Periodic inspection of the trailer hitch should be performed to ensure all mounting hardware remains tight and structural components are secure.

To help prevent damage to the product or vehicle, refer to the specified torque specifications when securing hardware during the installation process.

## SAFETY INSTRUCTIONS

Safety glasses should be worn at all times while installing this product.

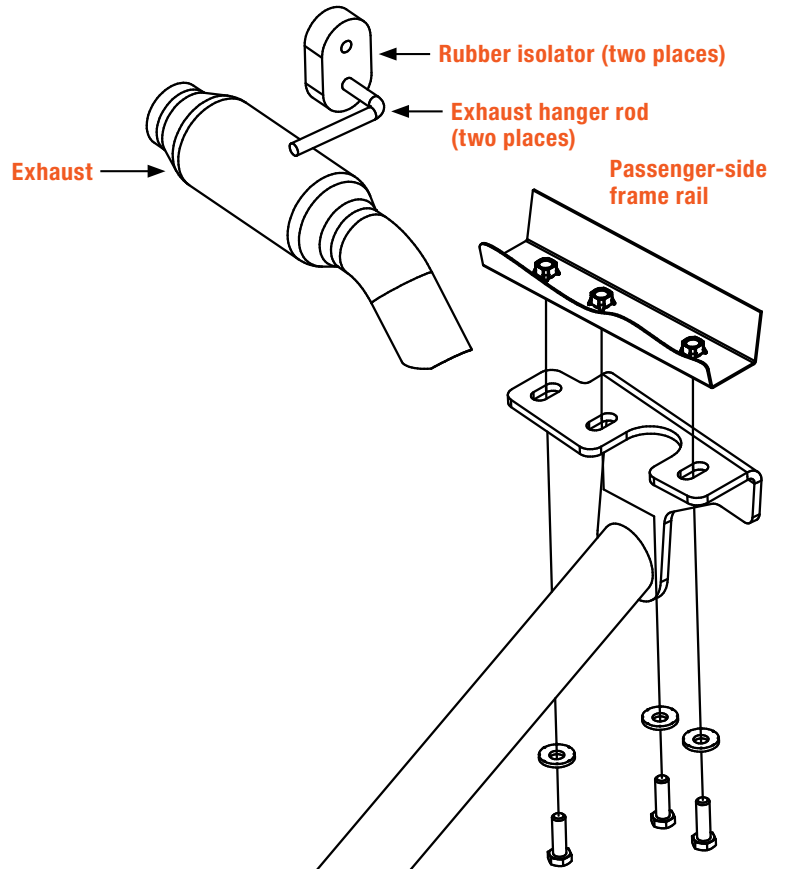
## Product Registration and Warranty

CURT stands behind our products with industry-leading warranties. To get copies of the product warranties, register your purchase or provide feedback, visit: [warranty.curtgroup.com/surveys](http://warranty.curtgroup.com/surveys)

# ASSEMBLY

## Parts List

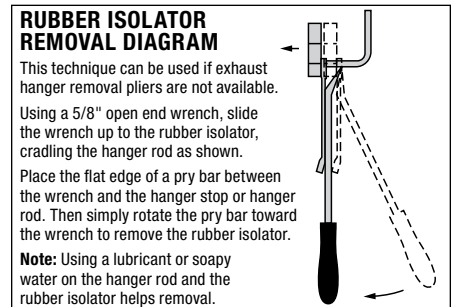
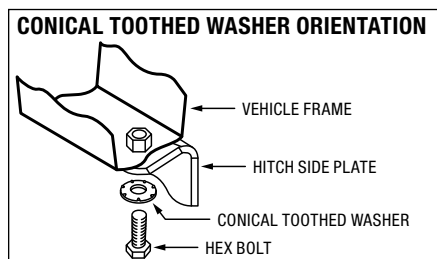
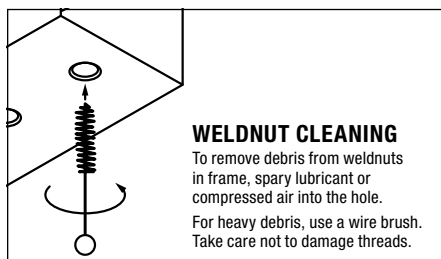
Item	Qty	Description
1	6	Hex bolt, M12-1.25 x 40mm, CL8.8
2	6	Conical-toothed washer, 1/2"



Driver-side frame rail

Existing weldnuts (both sides)

FRONT  
REAR



### Step 1

Remove the plastic cover on the driver side by removing the six plastic clips securing it in place.

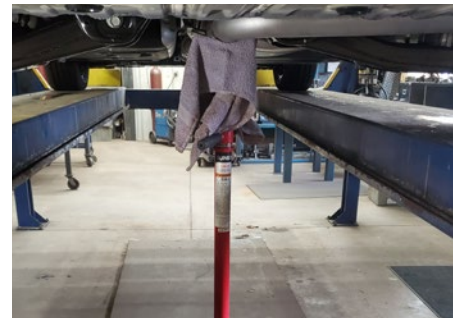
Set the plastic cover and five of the plastic clips aside for reinstallation in Step 6. Return one of the clips to the owner.



### Step 2

Lower the exhaust by removing the two rearmost rubber isolators from the exhaust hanger rods. Use a stand to support the exhaust and prevent any damage.

The exhaust will be reinstalled in Step 6.



### Step 3

Raise the trailer hitch into position by sliding the passenger side of the hitch over the exhaust first. Align the three holes in the hitch with the three weldnuts in the bottom of both driver- and passenger-side frame rails.

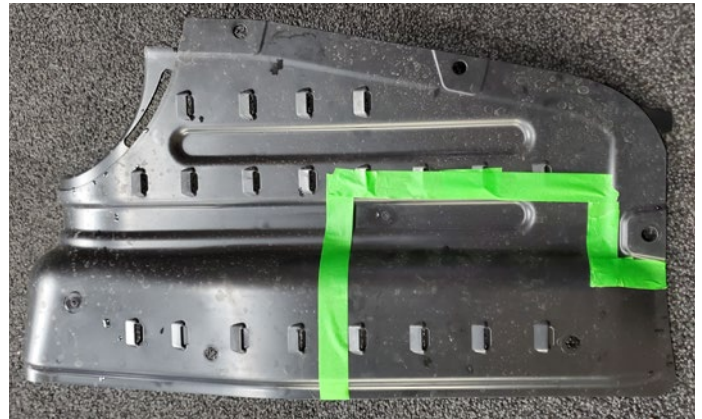
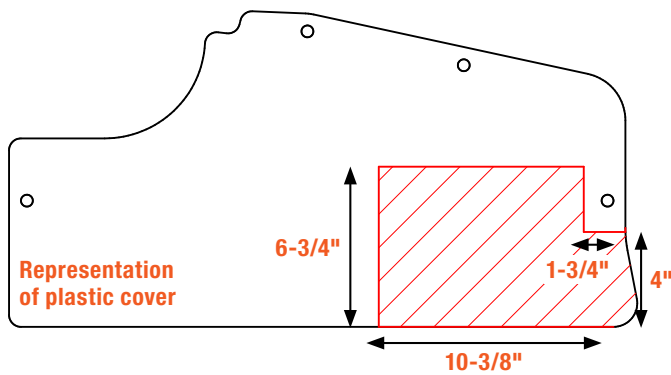
Loosely install three hex bolts (#1) and three conical washers (#2) into the hitch holes and weld nuts on both sides.

Torque all M12 fasteners to 60 ft-lbs.



### Step 4

Trim the plastic cover using the dimensions shown.



### Step 5

Inspect the hitch and the bumper fascia tab on the passenger side near the exhaust to make sure there is adequate clearance. If additional clearance is needed between hitch and bumper fascia tab, trim bumper fascia tab as needed.



## Step 6

Reinstall the plastic cover and exhaust removed in Steps 1 and 2.



## TOWING BASICS & SAFETY INFORMATION

For information on safely towing your trailer, visit [curtmfg.com/understanding-towing](https://curtmfg.com/understanding-towing).

## Final Installed Image

