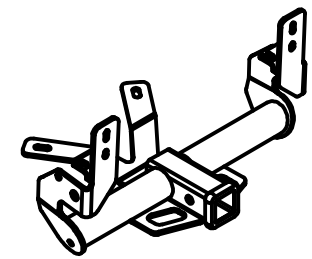




Class III Receiver Hitch Part No. 69572C



Fits: AUDI Q5 & PORSCHE MACAN (EXCLUDING HYBRID)



GROSS LOAD CAPACITY WHEN USED AS A WEIGHT CARRYING HITCH: 5000 LBS. TRAILER WEIGHT & 750 LBS. TONGUE WEIGHT.
WARNING: * DO NOT EXCEED VEHICLE MANUFACTURER'S RECOMMENDED TOWING CAPACITY. *****



Parts List			
ITEM	QTY	PART NUMBER	DESCRIPTION
1	2	HFN 1213, GR8	HEX FLANGE NUT
2	2	1/2-13 x 1 1/4, GR8	CARRIAGE BOLT
3	2	U-BOLT	3/8-16 x 1.5x1 SQUARE U-BOLT
4	4	HFN3816	HEX FLANGE NUT
5	2	CM-SP17	.250 x 1.25 x 2.50" SQUARE HOLE SPACER
6	2	3_8 FISHWIRE	3/8" FISHWIRE

REQUIRED FOR AUDI MODELS TOOLS REQUIRED
T-20 TORX BIT
3/4" SOCKET
9/16" SOCKET
13mm SOCKET
RATCHET
TORQUE WRENCH

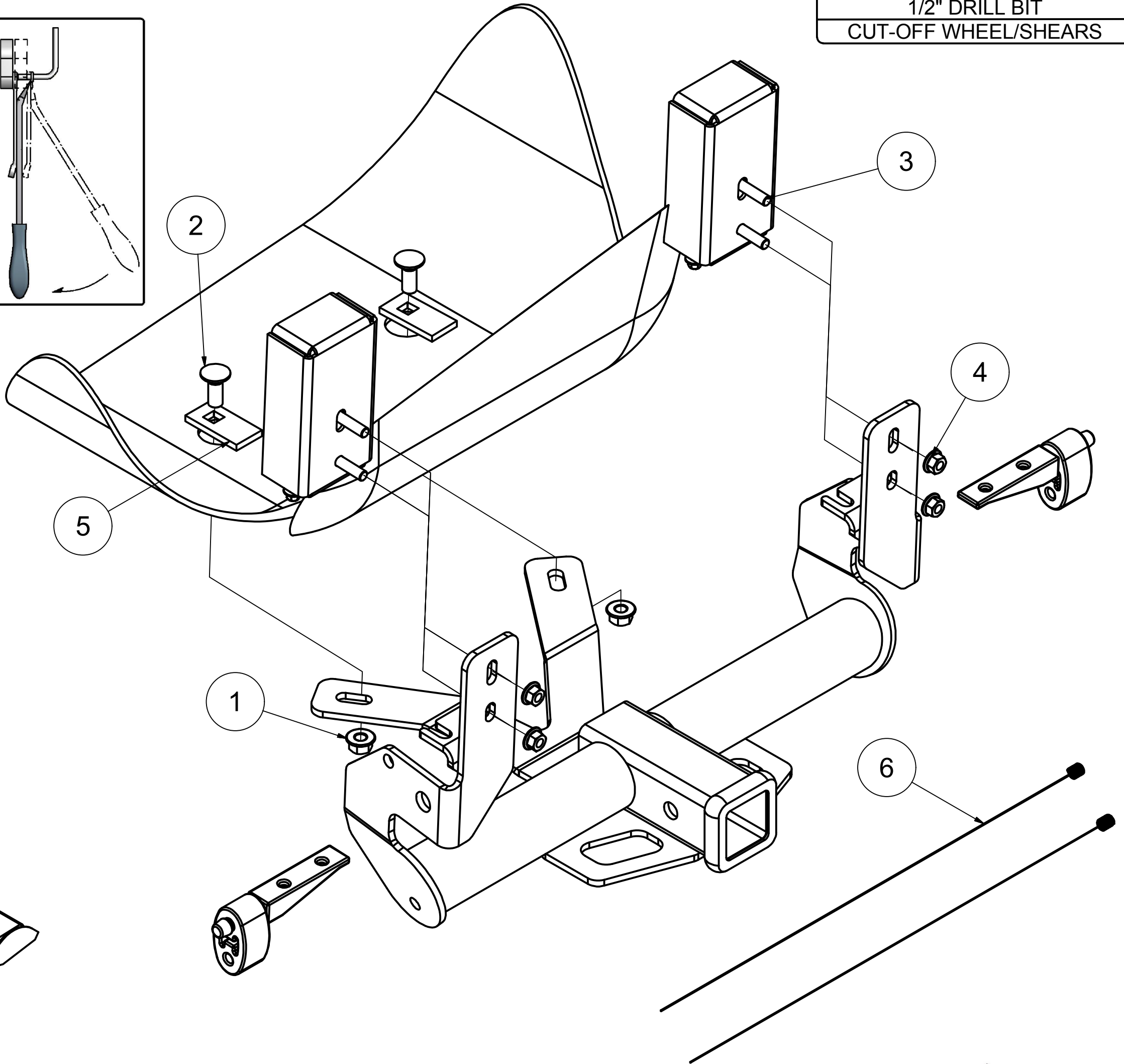
ADDITIONAL TOOLS REQUIRED FOR PORSCHE MODELS TOOLS REQUIRED
FLATHEAD SCREWDRIVER
10mm SOCKET
T-27 TORX BIT
12" SOCKET EXTENSION
PAINT PEN/MARKER
POWER DRILL
1/2" DRILL BIT
CUT-OFF WHEEL/SHEARS

RUBBER ISOLATOR REMOVAL DIAGRAM

This technique can be used if an Exhaust Hanger Removal Pliers is not available.

Using a 5/8" open end wrench, slide the wrench up to the rubber isolator, cradling the hanger rod as shown. Next place the flat edge of a pry bar between the wrench and the hanger stop or hanger rod. Then simply rotate the pry bar toward the wrench to remove the rubber isolator.

Note: Using a spray lubricant or soapy water on the hanger rod and the rubber isolator helps removal.



U-BOLT

FIG 1.

HITCH WEIGHT: 25 LBS.

INSTALL TIME

PROFESSIONAL: 90 MINUTES

NOVICE (DIY): 45 MINUTES

INSTALL NOTES:

- SOME MODELS REQUIRE DRILLING
- SOME MODELS REQUIRE TRIMMING
- TEMPORARILY LOWER EXHAUST
- TEMPORARY PART REMOVAL

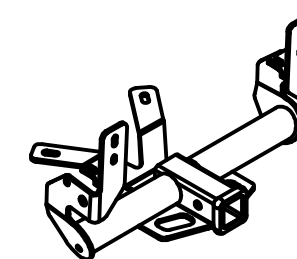
PERIODICALLY CHECK THIS RECEIVER HITCH TO ENSURE THAT ALL FASTENERS ARE TIGHT AND THAT ALL STRUCTURAL COMPONENTS ARE SOUND.

Keystone Automotive Operations Inc., warrants this product to be free of defects in material and/or workmanship at the time of retail purchase by the original purchaser. If the product is found to be defective, Keystone Automotive Operations Inc., may repair or replace the product, at their option, when the product is returned, prepaid, with proof of purchase. Alteration to, misuse of, or improper installation of this product voids the warranty. Keystone Automotive Operations Inc.'s liability is limited to repair or replacement of products found to be defective, and specifically excludes liability for incidental or consequential loss or damage. This product complies with safety specifications and requirements for connecting devices and towing systems of the state of New York, V.E.S.C. Regulation V-5 and SAE J684. For Technical & Warranty Support: 1-877-544-4449 Fax- 1-855-242-8922 www.huskytow.com

11202017



Class III Receiver Hitch Part No. 69572C



Fits: AUDI Q5 & PORSCHE MACAN (EXCLUDING HYBRID)



GROSS LOAD CAPACITY WHEN USED AS A WEIGHT CARRYING HITCH: 5000 LBS. TRAILER WEIGHT & 750 LBS. TONGUE WEIGHT.

WARNING: * DO NOT EXCEED VEHICLE MANUFACTURER'S RECOMMENDED TOWING CAPACITY. *****



(READ ALL STEPS BEFORE BEGINNING INSTALLATION.)

INSTALLATION STEPS

1. Remove the bumper fascia by removing (4) T-20 Torx bit screws; (2) from the trunk (1) from each wheel well, and disconnect (1) snap tab on each side from the bumper to the support strap.
2. Remove lower bumper fascia by lightly pulling along the snap groove, which spans the length of the bumper and disconnect (4) sensor plugs if equipped. Set fascia aside for reassembly.
(**Note:** Audi Q5-S, SQ5 models require removal of entire bumper fascia.)
3. Lower the exhaust hanger from each side of the vehicle frame support by removing (2) 8mm bolts from each exhaust hanger bracket. Cut around the (2) trunk pan plugs and return to customer.
Porsche models: Remove trunk pan cover by removing (4) nuts with a 10mm socket prior to cutting around the trunk pan plugs. Return cover to customer.
4. Install the u-bolts in the frame rail support as shown in Fig 1. Resecure the exhaust bracket each side, clamping the hitch mounting strap between the frame support and the hanger bracket by replacing 8mm bolts.
5. **Porsche models:** The trunk pan mounting holes must be drilled. Open trunk to clear vehicle components for drilling. Remove floor panels and spare tire, set aside. Disconnect battery terminals with a 10mm socket, remove audio module by removing (2) T-27 Torx screws. Disconnect battery strap using a 13mm socket and extension.
6. **Porsche models:** With trunk components cleared for drilling, mark drill holes through hitch mounting holes on underside of pan. Drill 1/2" access for mounting hardware.
7. Insert the 1/2" carriage bolt and spacer into the trunk pan holes. Apply caulk/sealant to the area between the trunk pan hole and hitch. Raise hitch into position and lightly secure with 1/2" hardware.
8. In sequence, torque 1/2" hardware to 110 lb-ft, 8mm bolts to 23 lb-ft, and 3/8" u-bolts to 45 lb-ft. Reinstall lower bumper fascia by following steps 1-2 in reverse.
Porsche models: Fascia must be trimmed before reassembly. Trunk components can be reinstalled at this time (Step 5 in reverse).
9. **Porsche models:** Raise rear fascia up into position and mark around side plate interference where fascia needs to be trimmed. Approx. 1/2" x 1" each side. Trim area with either a cut-off wheel or shears.
After fit is confirmed, clip fascia back into position by following Steps 1-2 in reverse.

PERIODICALLY CHECK THIS RECEIVER HITCH TO ENSURE THAT ALL FASTENERS ARE TIGHT AND THAT ALL STRUCTURAL COMPONENTS ARE SOUND.