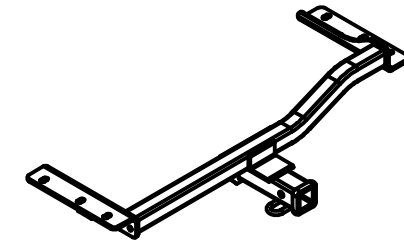




# Class III Receiver Hitch

## Part No. 69557C



**Fits: LEXUS RX 350 (INCLUDING F SPORT) & RX 450H**



GROSS LOAD CAPACITY WHEN USED AS A WEIGHT CARRYING HITCH: 4,000 LBS. TRAILER WEIGHT & 600 LBS. TONGUE WEIGHT.  
 GROSS LOAD CAPACITY WHEN USED AS A WEIGHT DISTRIBUTION HITCH: 5,000 LBS. TRAILER WEIGHT & 600 LBS. TONGUE WEIGHT

**WARNING: \*\*\* DO NOT EXCEED VEHICLE MANUFACTURER'S RECOMMENDED TOWING CAPACITY. \*\*\***

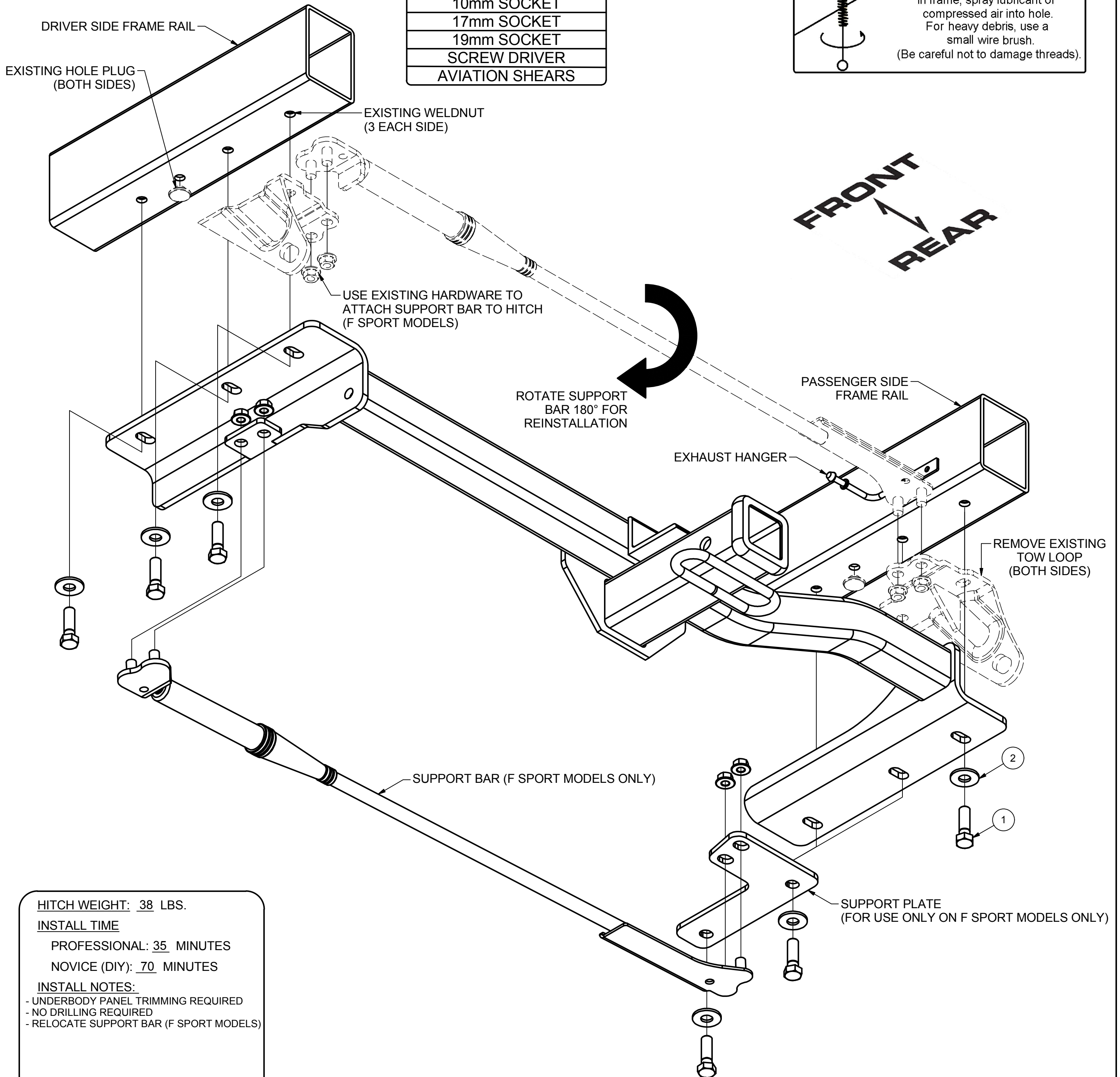


Parts List			
ITEM	QTY	PART NUMBER	DESCRIPTION
1	6	M12 - 1.25 x 40 HEX	HEX BOLT
2	6	1/2"	CONICAL TOOTHED WASHER

TOOLS REQUIRED
RATCHET
TORQUE WRENCH
9" SOCKET EXTENSION
10mm SOCKET
17mm SOCKET
19mm SOCKET
SCREW DRIVER
AVIATION SHEARS

**WELDNUT CLEANING**

To remove debris from weldnuts in frame, spray lubricant or compressed air into hole. For heavy debris, use a small wire brush. (Be careful not to damage threads).



**HITCH WEIGHT:** 38 LBS.

**INSTALL TIME**

PROFESSIONAL: 35 MINUTES

NOVICE (DIY): 70 MINUTES

**INSTALL NOTES:**

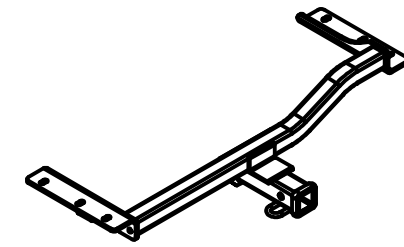
- UNDERBODY PANEL TRIMMING REQUIRED
- NO DRILLING REQUIRED
- RELOCATE SUPPORT BAR (F SPORT MODELS)

**PERIODICALLY CHECK THIS RECEIVER HITCH TO ENSURE THAT ALL FASTENERS ARE TIGHT AND THAT ALL STRUCTURAL COMPONENTS ARE SOUND.**

Keystone Automotive Operations Inc., warrants this product to be free of defects in material and/or workmanship at the time of retail purchase by the original purchaser. If the product is found to be defective, Keystone Automotive Operations Inc., may repair or replace the product, at their option, when the product is returned, prepaid, with proof of purchase. Alteration to, misuse of, or improper installation of this product voids the warranty. Keystone Automotive Operations Inc.'s liability is limited to repair or replacement of products found to be defective, and specifically excludes liability for incidental or consequential loss or damage. This product complies with safety specifications and requirements for connecting devices and towing systems of the state of New York, V.E.S.C. Regulation V-5 and SAE J684. For Technical & Warranty Support: 1-877-544-4449 Fax- 1-855-242-8922 [www.huskytow.com](http://www.huskytow.com) **11202017**



# Class III Receiver Hitch Part No. 69557C



Fits: LEXUS RX 350 (INCLUDING F SPORT) & RX 450H



GROSS LOAD CAPACITY WHEN USED AS A WEIGHT CARRYING HITCH: 5,000 LBS. TRAILER WEIGHT & 600 LBS. TONGUE WEIGHT.  
GROSS LOAD CAPACITY WHEN USED AS A WEIGHT DISTRIBUTION HITCH: 4,000 LBS. TRAILER WEIGHT & 600 LBS. TONGUE WEIGHT

**WARNING: \*\*\* DO NOT EXCEED VEHICLE MANUFACTURER'S RECOMMENDED TOWING CAPACITY. \*\*\***

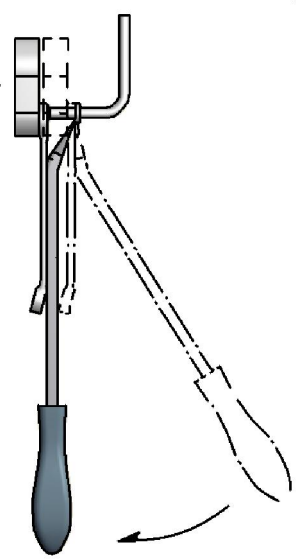


## RUBBER ISOLATOR REMOVAL DIAGRAM

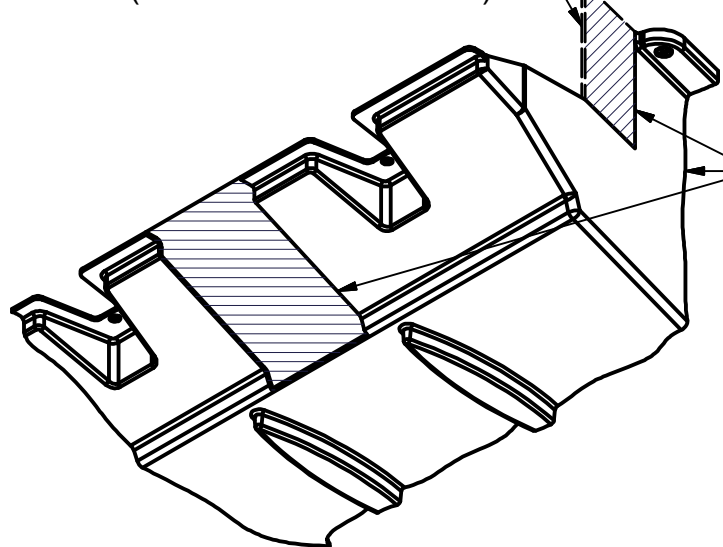
This technique can be used if an Exhaust Hanger Removal Pliers is not available.

Using a 5/8" open end wrench, slide the wrench up to the rubber isolator, cradling the hanger rod as shown. Next place the flat edge of a pry bar between the wrench and the hanger stop or hanger rod. Then simply rotate the pry bar toward the wrench to remove the rubber isolator.

Note: Using a spray lubricant or soapy water on the hanger rod and the rubber isolator helps removal.

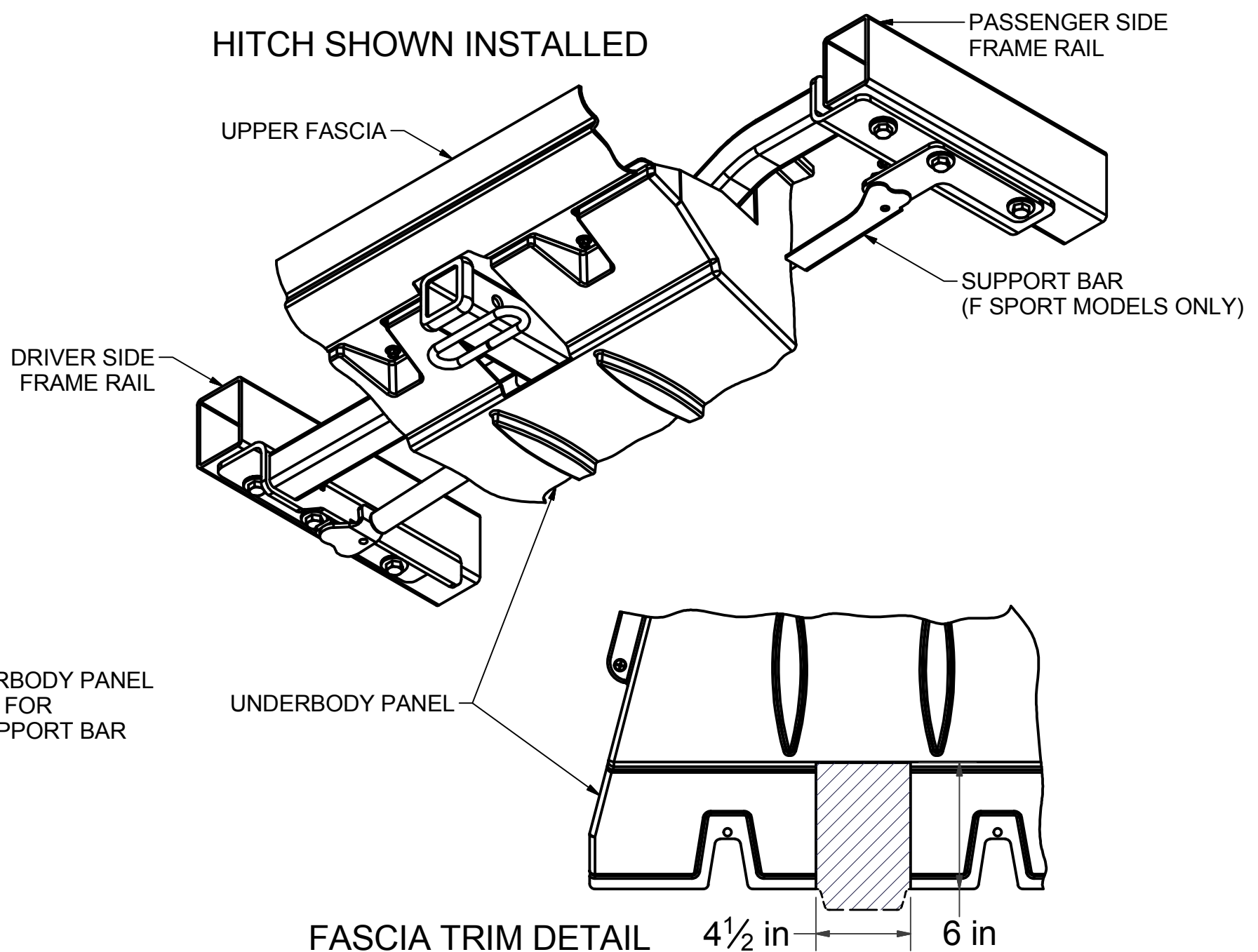


TRIM FASCIA AS NEEDED  
FOR HITCH / SUPPORT  
BAR (ON F SPORT MODELS)



TRIM UNDERBODY PANEL  
AS NEEDED FOR  
HITCH & SUPPORT BAR

## HITCH SHOWN INSTALLED



## INSTALLATION STEPS

**NOTE:** Tow loops cannot be reattached on F Sport models. Tow loop reattachment is optional on other models.

1. Temporarily remove lower fascia by removing 13 fasteners.
2. Temporarily lower exhaust, if needed for ease of installation. Support exhaust as needed to prevent damage.
3. Remove existing hole plugs from frame rails and return to owner.
4. (F Sport models only) Remove support bar which is attached to tow loops by removing four nuts. The existing nuts will be used to attach the support bar to the hitch in STEP 7.
5. Remove existing tow loop fasteners and tow loops. Return fasteners to owner (they will not be reinstalled).
6. Raise hitch (with tow loops if they are being reinstalled) into position by aligning with existing weldnuts in frame.  
**NOTE:** Hitch will be clamped between tow loops and frame rails if tow loops are being reinstalled.  
**NOTE:** (F Sport models only) Place support plate under passenger side plate, as shown on page 1. Hitch will be clamped between frame and support plate.
7. Secure hitch with 12mm bolts and 1/2" conical toothed washers into existing weldnuts.
8. (F Sport models only) Attach the support bar to the hitch and support plate using the existing nuts removed in STEP 4.  
**NOTE:** Support bar will be rotated upside down from how it was originally attached to the tow loops.
9. Torque all 12mm fasteners to 86 ft-lbs.
10. Reinstall exhaust, if it was lowered in STEP 2.
11. Trim lower fascia as needed and reattach. (See FASCIA TRIM DETAIL above)

**PERIODICALLY CHECK THIS RECEIVER HITCH TO ENSURE THAT ALL FASTENERS ARE TIGHT AND THAT ALL STRUCTURAL COMPONENTS ARE SOUND.**

Keystone Automotive Operations Inc., warrants this product to be free of defects in material and/or workmanship at the time of retail purchase by the original purchaser. If the product is found to be defective, Keystone Automotive Operations Inc., may repair or replace the product, at their option, when the product is returned, prepaid, with proof of purchase. Alteration to, misuse of, or improper installation of this product voids the warranty. Keystone Automotive Operations Inc.'s liability is limited to repair or replacement of products found to be defective, and specifically excludes liability for incidental or consequential loss or damage. This product complies with safety specifications and requirements for connecting devices and towing systems of the state of New York, V.E.S.C. Regulation V-5 and SAE J684.

11202017