



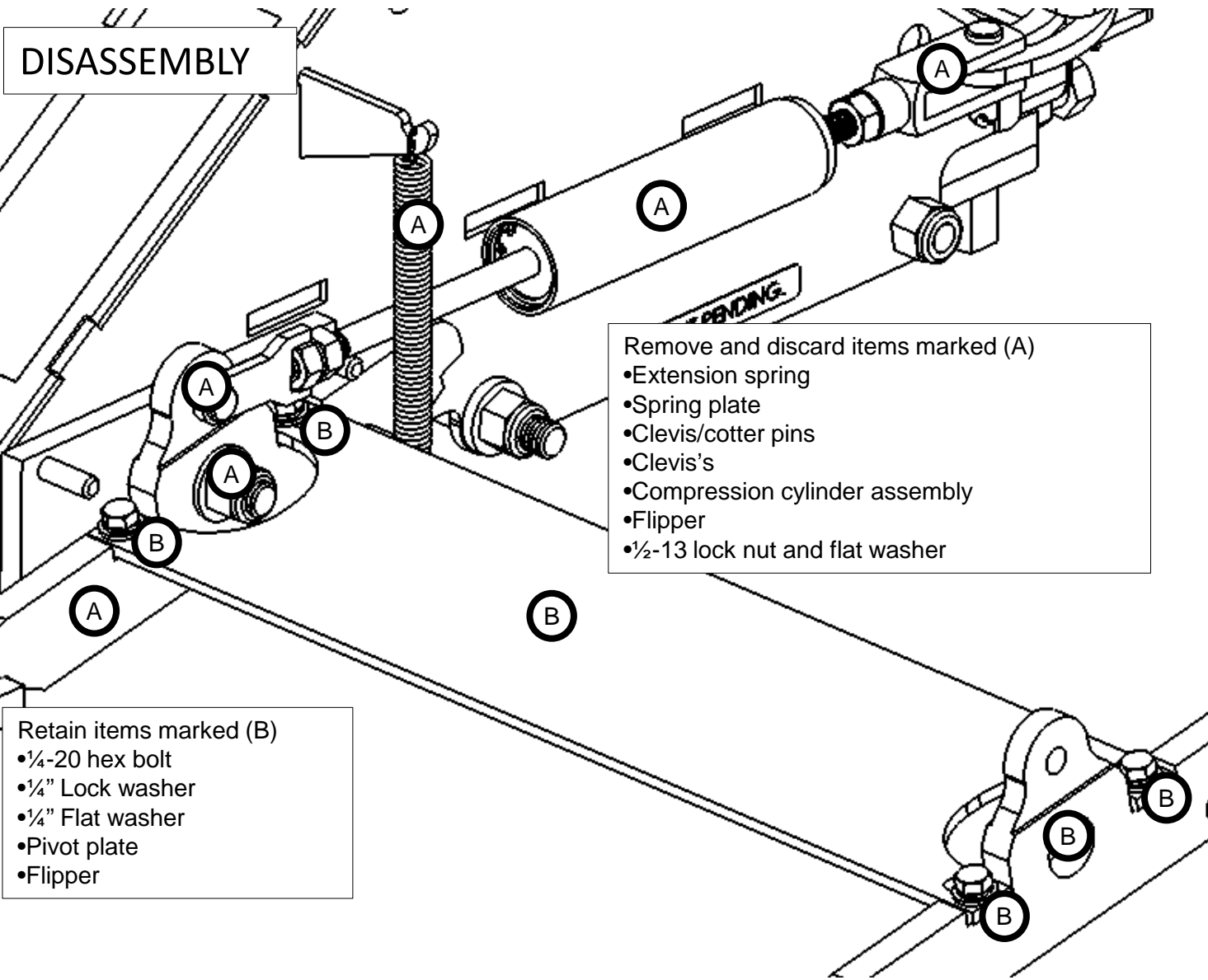
KIT, SERVICE, 16K HUSKY 10 COMPRESSION CYLINDER AND DS FLIPPER ASSEMBLY

Part # 31795



Dealer / Installer:	Provide a copy of these Instructions to the end user of this product. These Instructions provide important operating and safety information for proper usage of this product. Demonstrate the proper use of the product with the end user. Have the end user demonstrate that they understand the proper use of the product.
End User:	Read and follow all instructions included in this manual. Ask your Dealer / Installer for assistance if you do not understand the proper use of the product. Never remove any decals from the product.

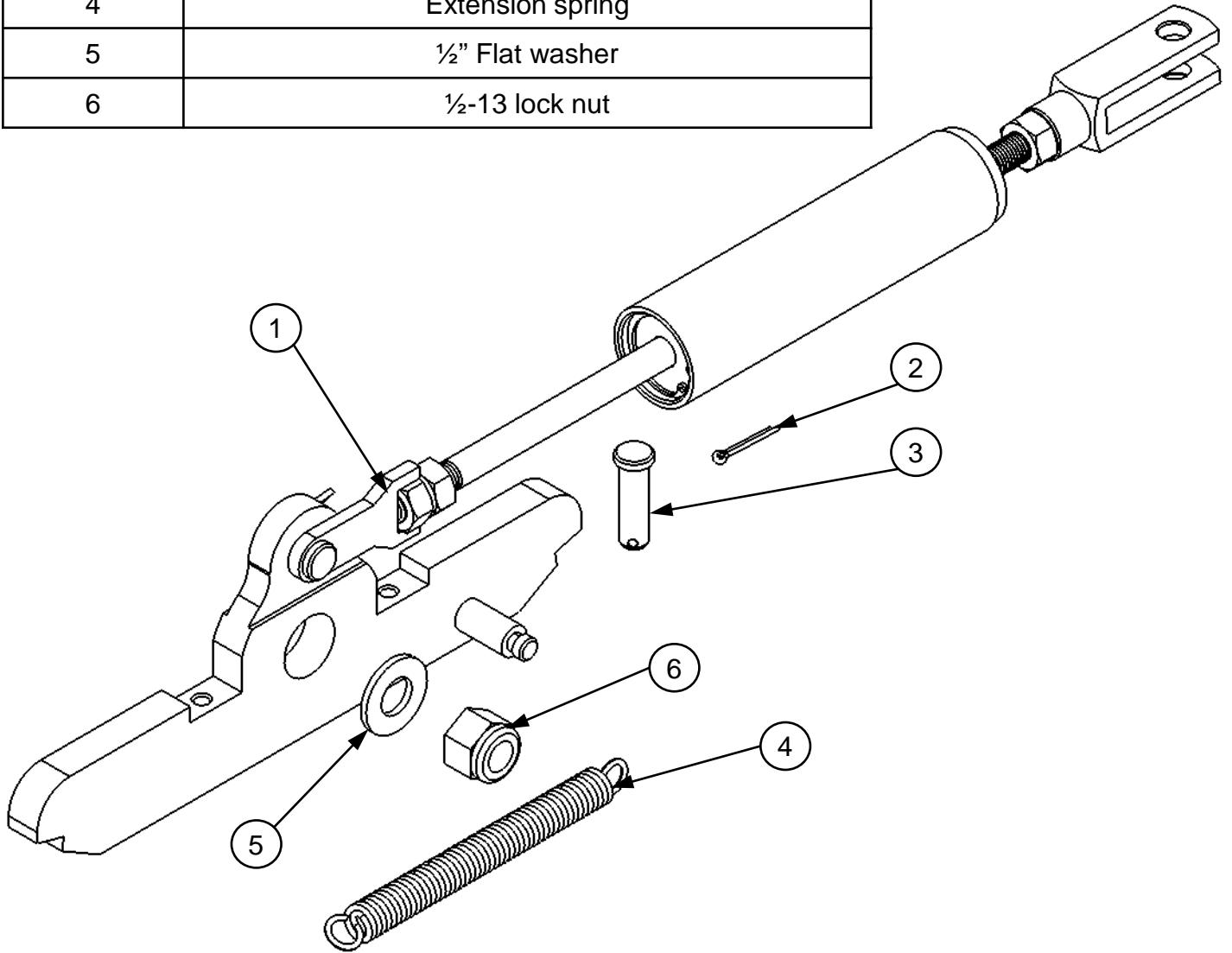
NOTE: SOME PARTS REMOVED FOR CLARIFICATION.



KIT CONTENTS

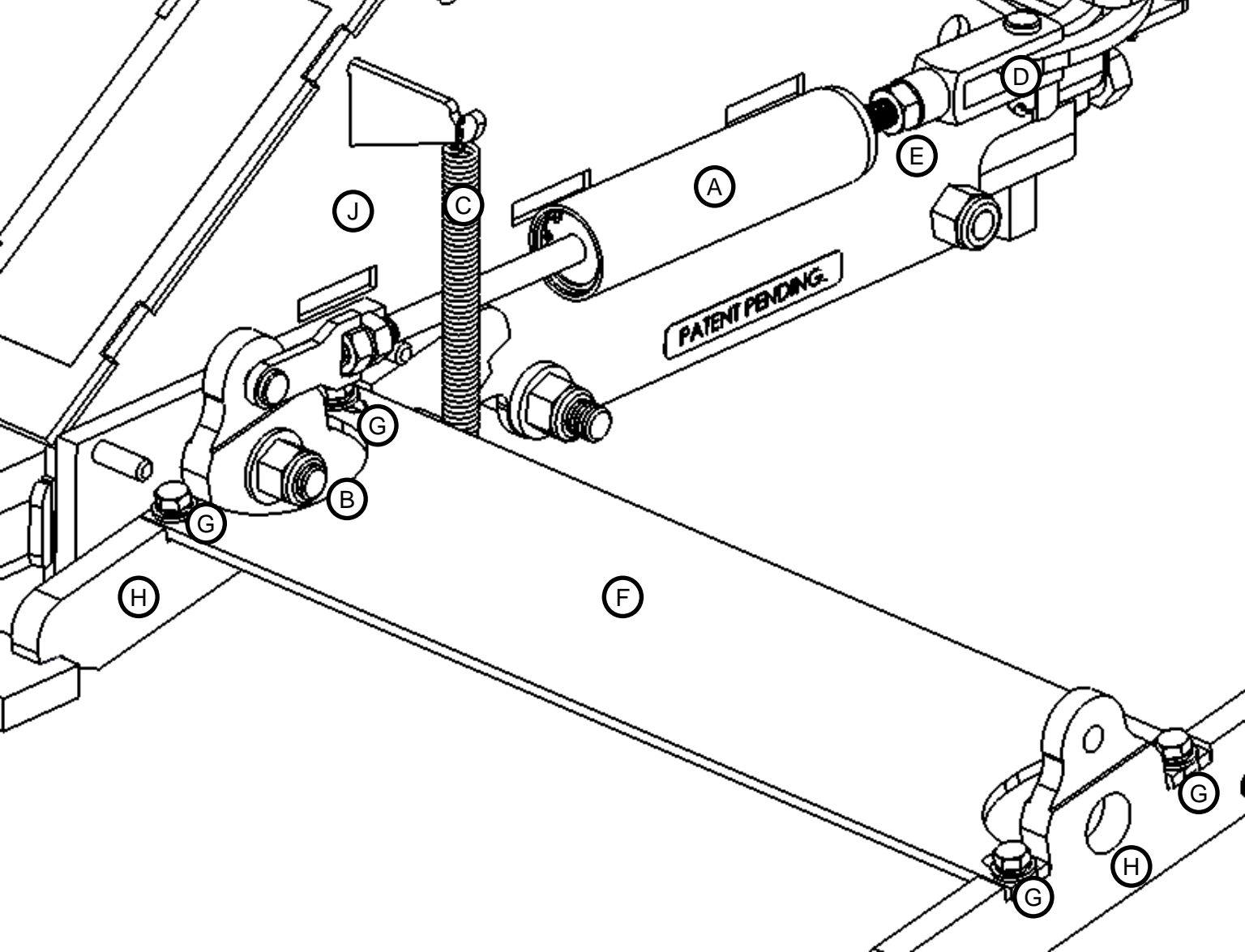
Parts listing

Item no.	Description
1	Flipper and compression cylinder assembly
2	Cotter pin
3	Clevis pin
4	Extension spring
5	½" Flat washer
6	½-13 lock nut



Tools required

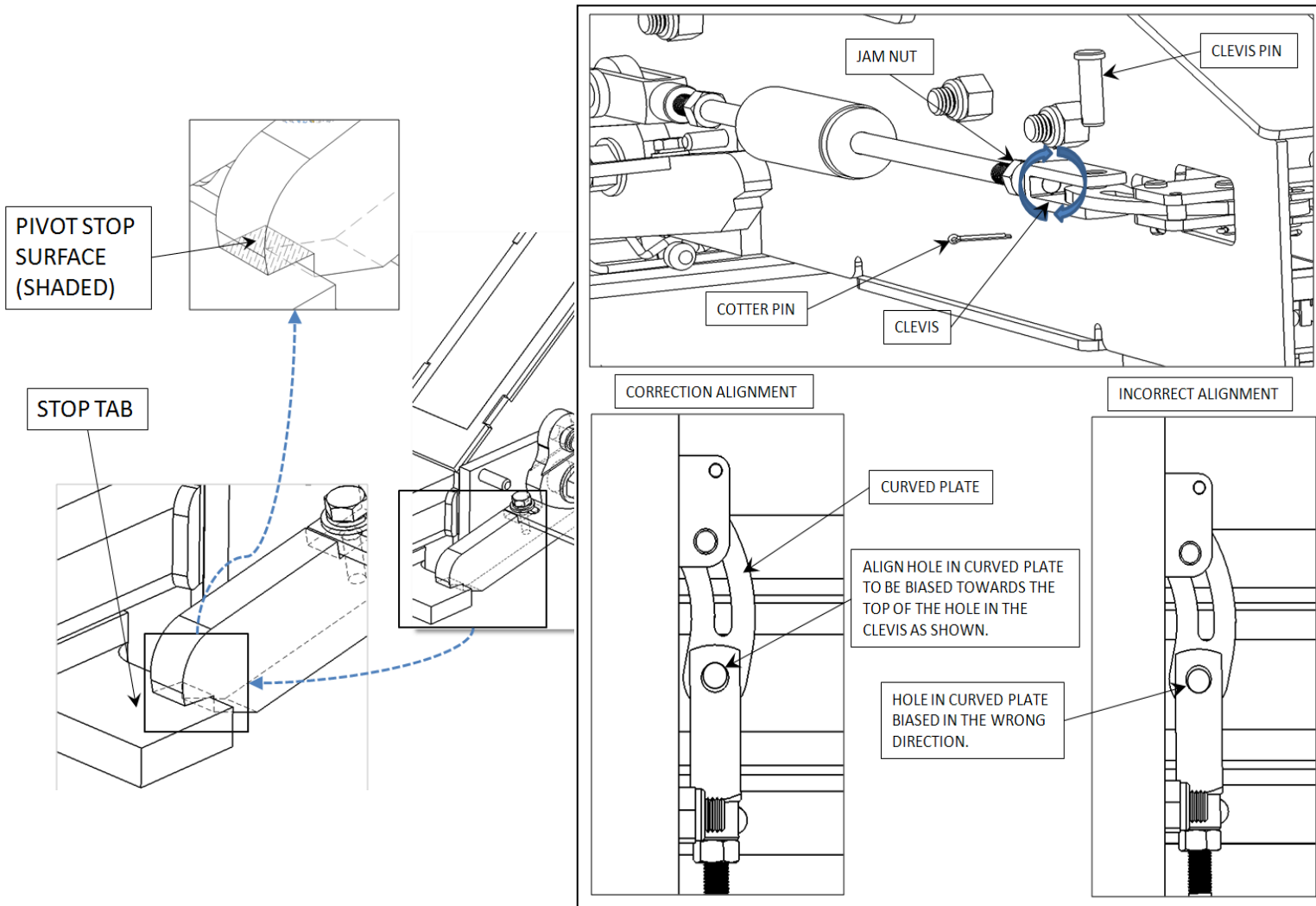
Needle nose pliers	14mm open end wrench
¾" Socket and ratchet	Thick grease
100 ft. Lbs. Min. Torque wrench	



ASSEMBLY AND ADJUSTMENT INSTRUCTIONS:

1. Apply grease to the pivot shaft (B).
2. Slide compression cylinder and flipper assembly on to pivot shaft (B).
3. Install ½" flat washer and ½-13 lock nut on to pivot shaft (B) and torque to 75 lbs. ft.
4. Install extension spring (C) as shown.
5. Install clevis pin and cotter pin (D)
6. Loosen hex nut (E).
7. Install pivot plate (F) onto flats (G) of flippers (H) and install ¼-20 hex bolts, lock/flat washers loosely.
8. Center the pivot plate (F) so that it is centered left to right.
9. Align flat surface of driver side flipper (H) so it is parallel to inside of housing surface (J) and tighten ¼-20 hex bolts. Repeat this for the passenger side flipper.
10. By hand, grab a hold of pivot plate (F) and rotate to ensure that it will move freely.

- With the hitch assembly in the driving position adjust the pivot stop surface so it just touches the stop tab by loosening the jam nut on the clevis/yoke; remove the cotter pin and clevis pin from the clevis that is furthest forward. Swing the clevis/yoke that is attached to the threaded shaft inwards away from the curved plate. Turn the clevis/yoke clockwise or counter clockwise to align the holes properly between the curved plate and the holes in the clevis/yoke as shown below.



- Re-install the clevis pin and the cotter pin.
- Put the handle into the maneuver position and slide the hitch assembly into the maneuver position and confirm that the stop edge on the pivot stops touch the stop tab.
- If all moves without binding and the pivot stop surface makes full contact with the stop tab in both positions then you are ready to complete the assembly by attaching the 5th wheel head and related components. Ensure cotter pin legs are bent over to prevent them from falling out.
- Tighten hex nut (E) snugly.