



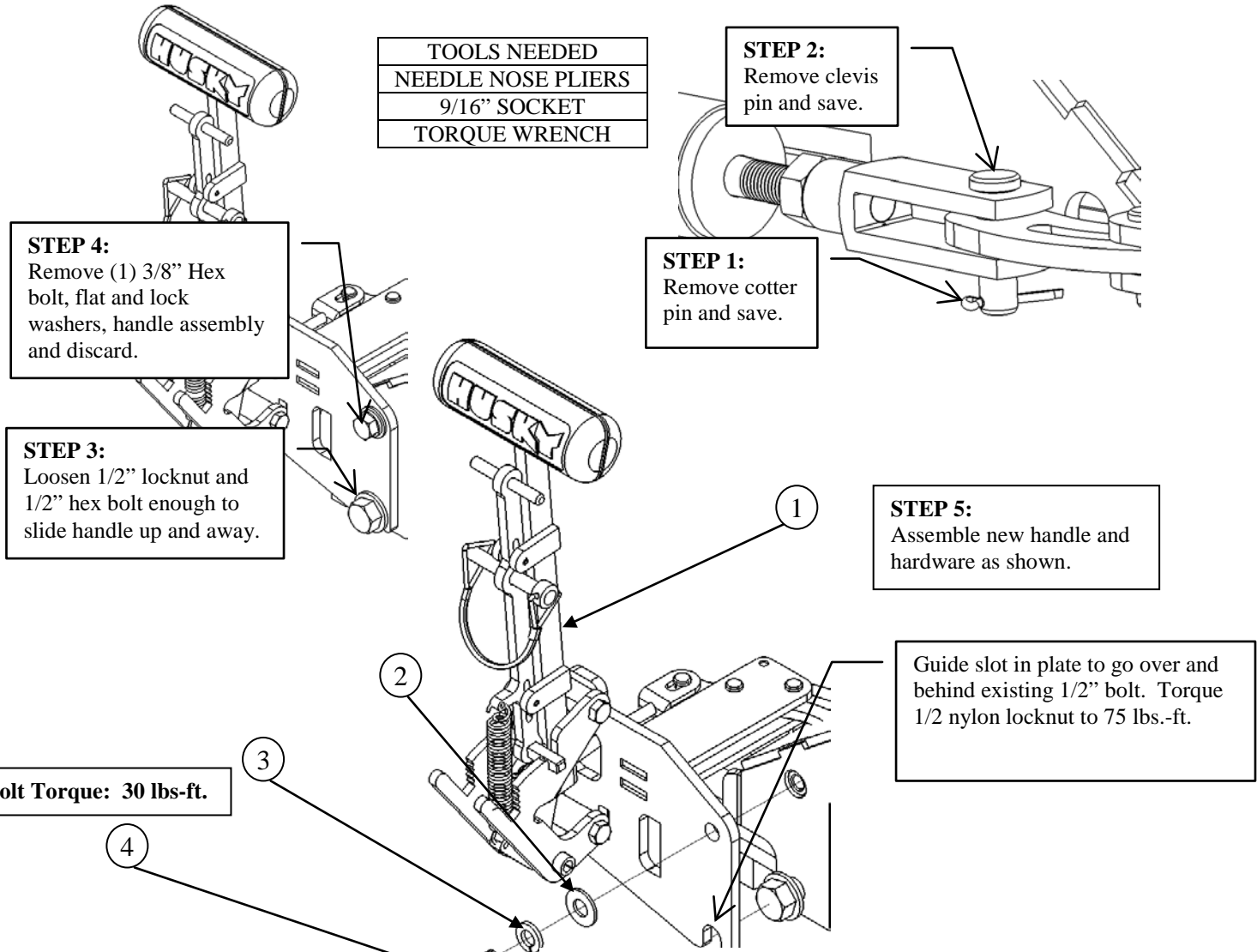
Assembly, Installation, Operation and Maintenance Instructions

16K Husky-10 Pull Handle Part # 31751 Service Kit.

Dealer / Installer: Provide a copy of these Instructions to the end user of this product. These Instructions provide important operating and safety information for proper usage of this product. Demonstrate the proper use of the product with the end user. Have the end user demonstrate that they understand the proper use of the product.

End User: Read and follow all instructions included in this manual. Ask your Dealer / Installer for assistance if you do not understand the proper use of the product. Never remove any decals from the product.

TOOLS NEEDED
NEEDLE NOSE PLIERS
9/16" SOCKET
TORQUE WRENCH



ITEM	DESCRIPTION	QTY.
1	PULL HANDLE ASSEMBLY	1
2	3/8" FLAT WASHER	1
3	3/8" LOCK WASHER	1
4	3/8" X 3/4" HEX HEAD BOLT	1

IMPORTANT! Check the operation of the flipper plates after new handle is assembled to ensure proper contact with the stop tabs is made. Make adjustments per the 16K Husky-10 instructions if necessary.