



Assembly, Installation, Operation and Maintenance Instructions

Kit, Base Rail Bracket Part # 31564

Dealer / Installer:	Provide a copy of these Instructions to the end user of this product. These Instructions provide important operating and safety information for proper usage of this product. Demonstrate the proper use of the product with the end user. Have the end user demonstrate that they understand the proper use of the product.
End User:	Read and follow all instructions included in this manual. Ask your Dealer / Installer for assistance if you do not understand the proper use of the product. Never remove any decals from the product.

APPLICATION: 2004 – 2014 FORD F150 PICK-UPS

NOTE: This bracket kit is to be used with the 31323 4 Bolt Bed Rail Kit or 30686 10 Bolt Bed Rail Kit.

COMPLETE PARTS LIST		
Item No.	Description	Quantity
1	Driver Side Front Bracket	1
2	Passenger Side Front Bracket	1
3	Driver Side Rear Bracket	1
4	Passenger Side Rear	1
5	Rear Mounting Strap	2
6	1/4" Spacer Plate	4
7	1" Spacer Tube	4
8	Ø5/8" -11 X 3.25" Grade 5 Hex Head Bolt	4
9	Ø5/8" Flat Washer	4
10	Ø5/8" - 11 CLIP NUT	4
11	Ø5/8" Lock Washer	4
12	Ø1/2" -13 X 4-3/4" Grade 5 Hex Head Bolt	4
13	Ø1/2" Flat Washer	4
14	Ø1/2" -13 Nylock Nut	4
15	Ø7/16" -14 X 2" X 1.41" U-Bolt	2
16	Ø7/16" Flat Washer	4
17	Ø7/16" Lock Washer	4
18	Ø7/16" -14 Grade 5 Hex Nut	4
19	Pull Wire	1

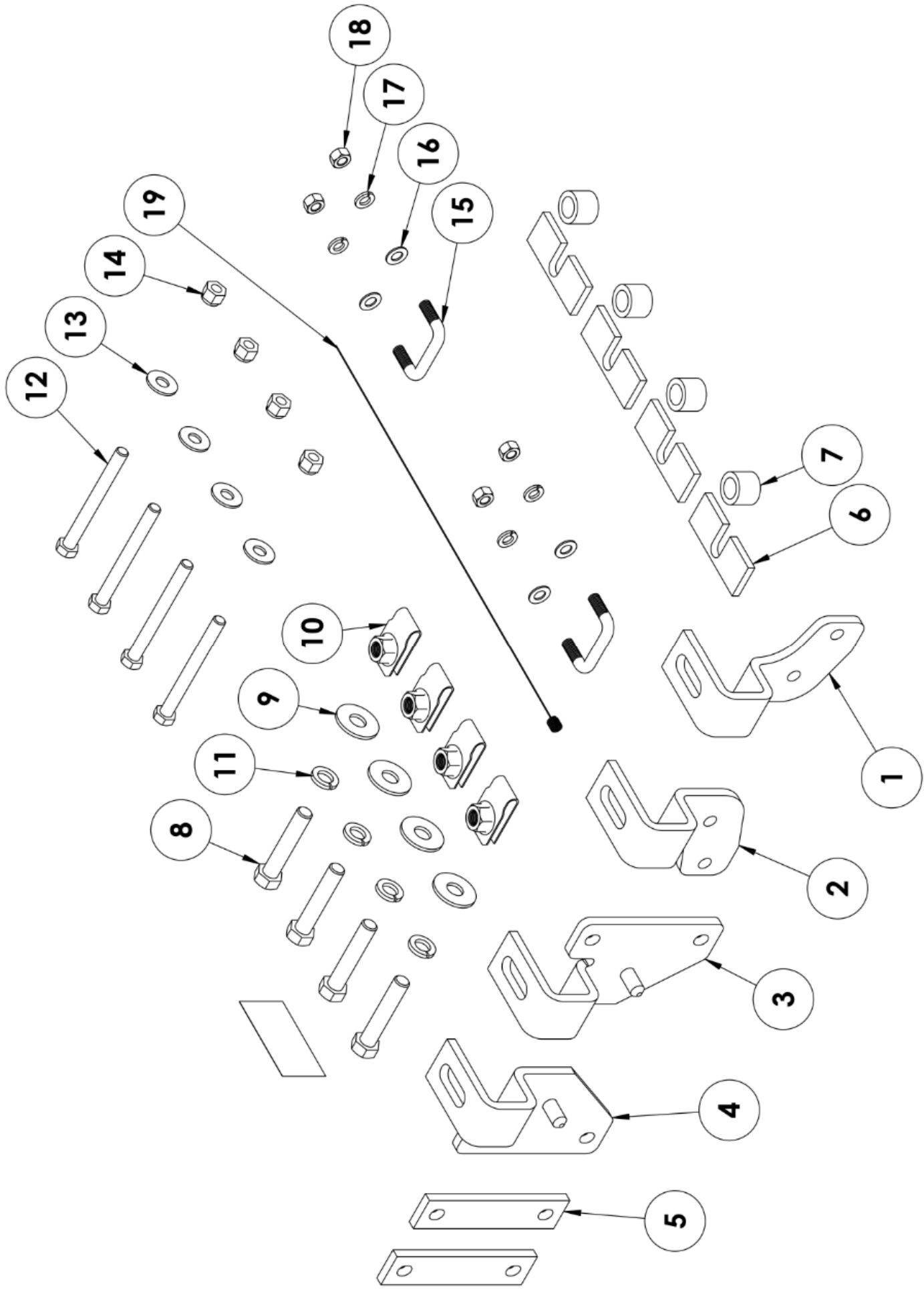
Tools Required
11/16" Socket & Wrench
3/4" Socket & Wrench
15/16" Socket & Wrench
Torque Wrench
Safety Glasses

Base Rails Not Included

WARNING! Never exceed the towing capacity of the tow vehicle.

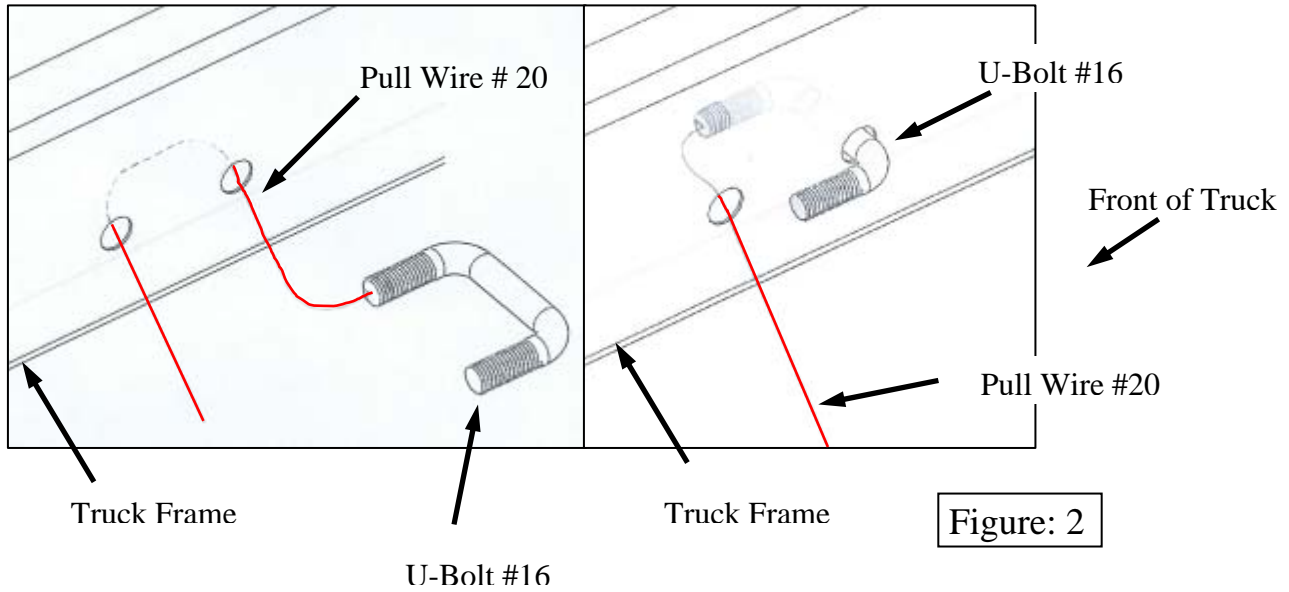
Center Bolt Kit 32059 (sold separately) must be used when towing with a 26K hitch, Goose Neck, or Maneuvering System.

CAUTION: Do not install base rails over plastic bed liners. Plastic bed liners must be cut out of the way. Rails may be installed on spray in liners. Consult spray liner installer for recommended curing time.

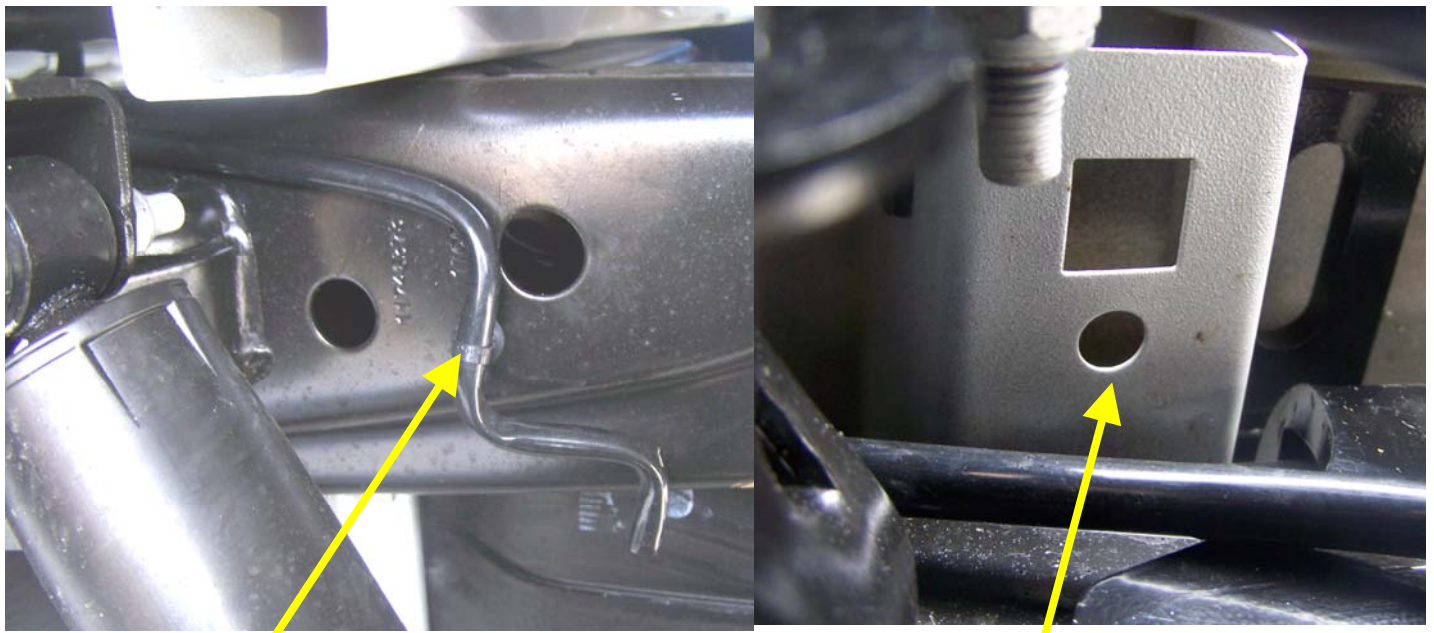


All Products limited to Vehicle Tow Rating, see Vehicle Owners Manual. See www.huskytow.com for Warranty Information / Tech Support / Product Updates. ©2017 DTS Mfg. All Rights Reserved. April 4, 2017-Rev14

1. Locate the two holes in the outer surfaces of the truck frame behind the shock mount. Place the pull wire on one leg of u-bolt #16 as shown in Figure 2 and install u-bolt into the two holes in truck frame.



Note: Some models may have a tube attached near this location on the driver's side, If so, gently pry tube and plastic attachment off of the frame and "zip tie" to the truck bed. See Figure 2B.



Tube attached on frame

"Zip Tie" to truck bed

2. Position the driver side front bracket #1 against the truck frame so previously installed u-bolt extends out through the two holes in bracket. Bolt bracket loosely in place as shown on Figure 3. Repeat installation procedure on passenger side of truck using the passenger side front bracket #2.

3. Position the driver side rear bracket #3 against outer surface of truck frame, just forward of the round tube cross member welded into the frame. There will be a hole near the center of the frame where the positioning pin in bracket will be inserted. Place one of the rear mount straps #5, against the inner surface of the truck frame and bolt in place with 1/2" bolts #12. These bolts will go above and below the truck frame and connect bracket #3 and strap #5 together. See Figure 3. Repeat installation procedure on driver side of vehicle using the driver side rear bracket #4 and remaining rear mount strap #5.

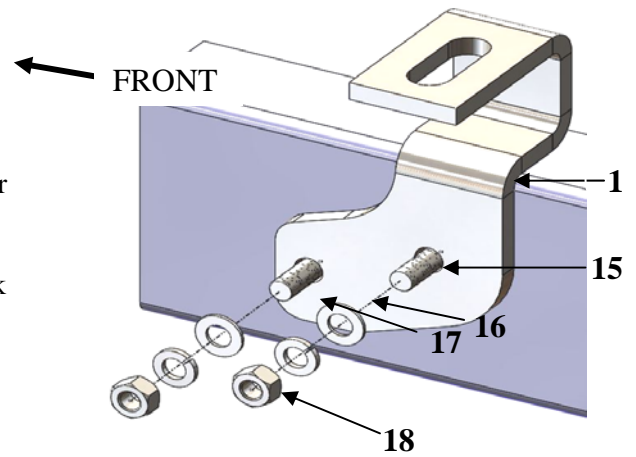


Figure: 3

4. Place the two base rails across the truck bed between the wheel wells. Position the 5th wheel uprights between wheel wells. When hitch is correctly positioned in the bed and the base rails are parallel, mark four attachment points on the truck bed using the 5/8" square holes indicated on Figure 4. Check below the bed before drilling holes to see that all wiring, brake lines, or other obstructions are moved out of the way and will not be contacted by the drill.

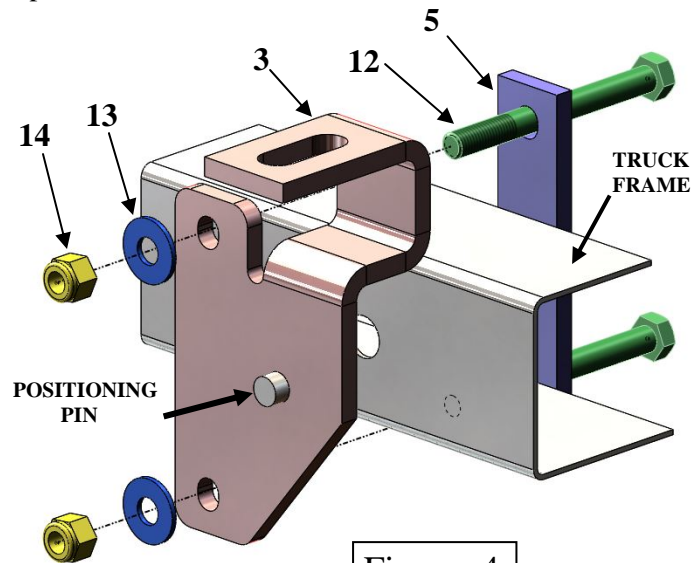
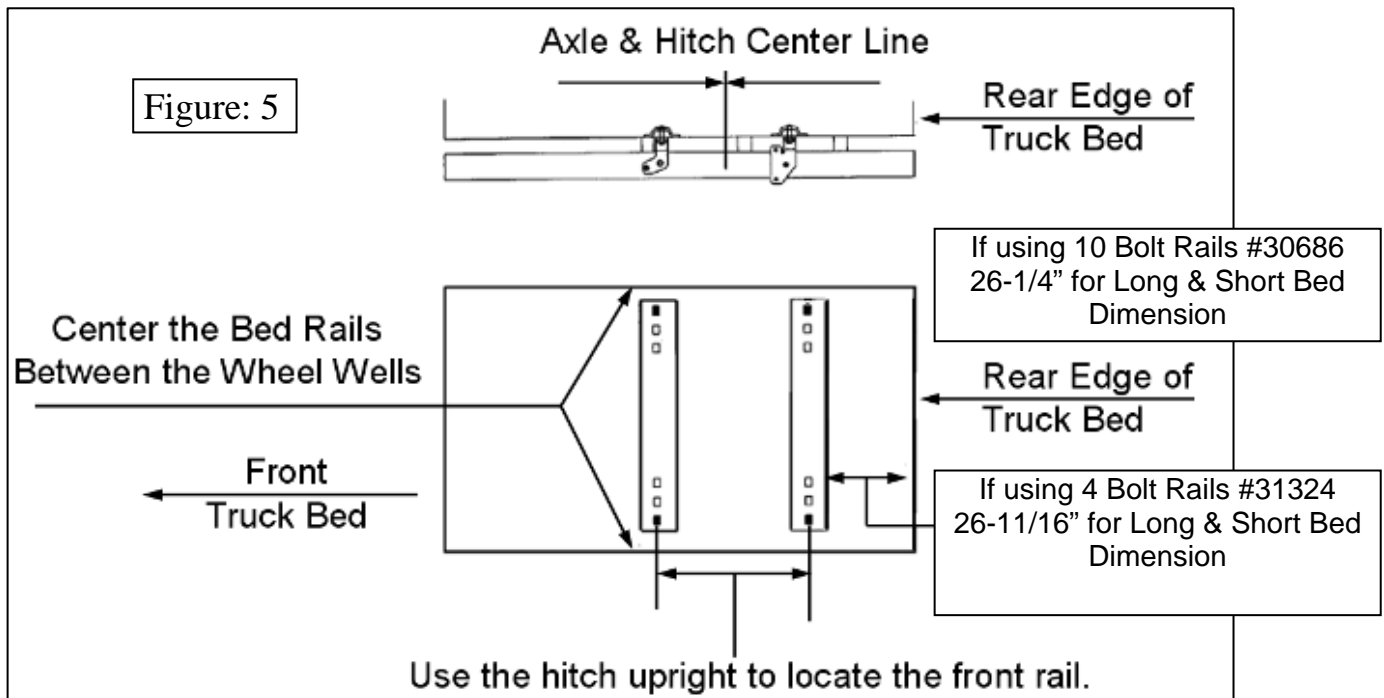


Figure: 4



5. Drill a 1/4" pilot hole down through the end square hole in each base rail. Check under bed to see that holes line up with slots in top of previously installed frame brackets. Make adjustments in base rail placement as needed. Move base rail assembly away from hole locations and drill a 5/8" hole down through bed at pilot holes. Take care that drill bit does not contact the under bed frame brackets.
6. Reposition the base rails in the bed so that the square 5/8" hole in the end of each rail is lined up over the drilled holes. Place a 1" spacer tube (item #7) under the ends of each base rail, in line with the drilled holes performed in step 5. See Figure 6 below.

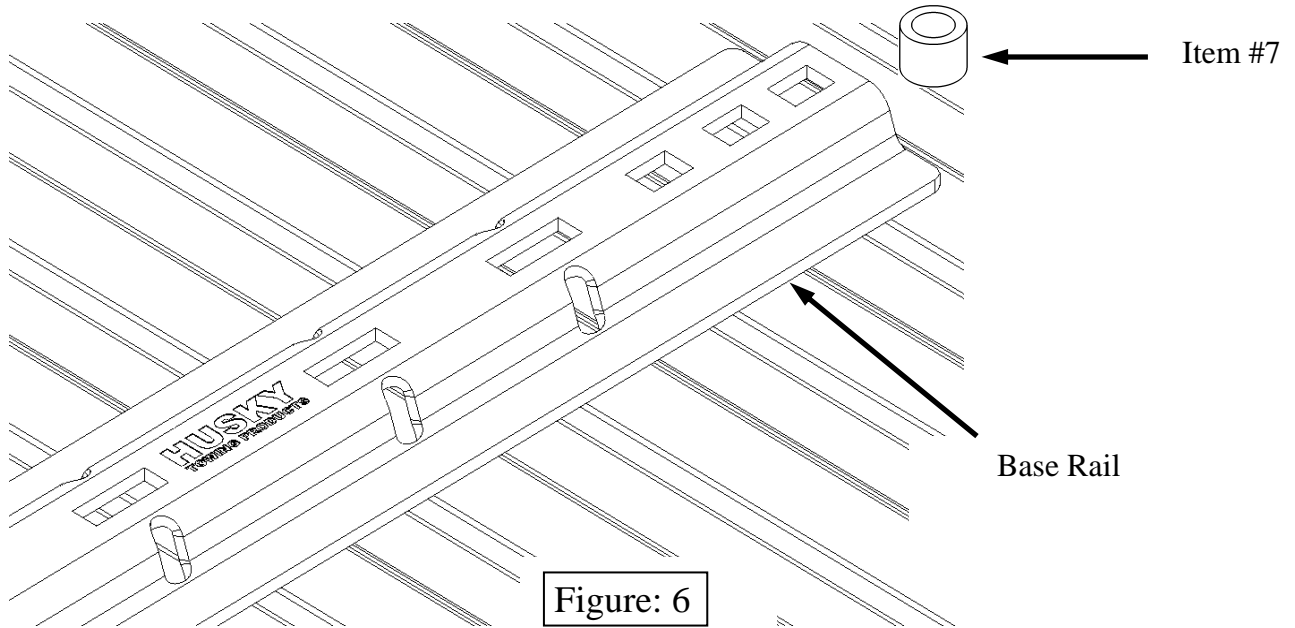


Figure: 6

7. If the bed corrugation above the angle bracket is **UP**, leaving a space above the angle bracket, place a spacer plate, item #6 in the location as shown in Figure 7. If the corrugation is **DOWN**, at this location, place a spacer plate, item #6, in the bed, under the base rail as shown.

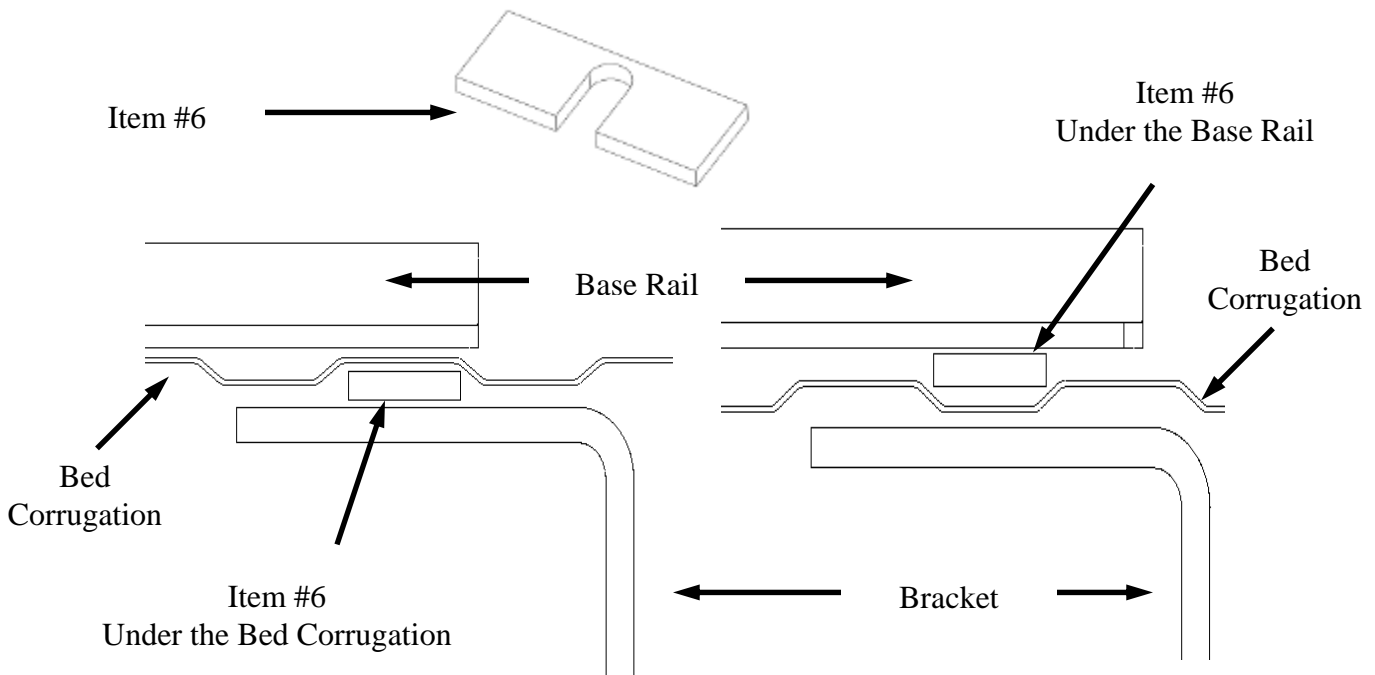


Figure: 7

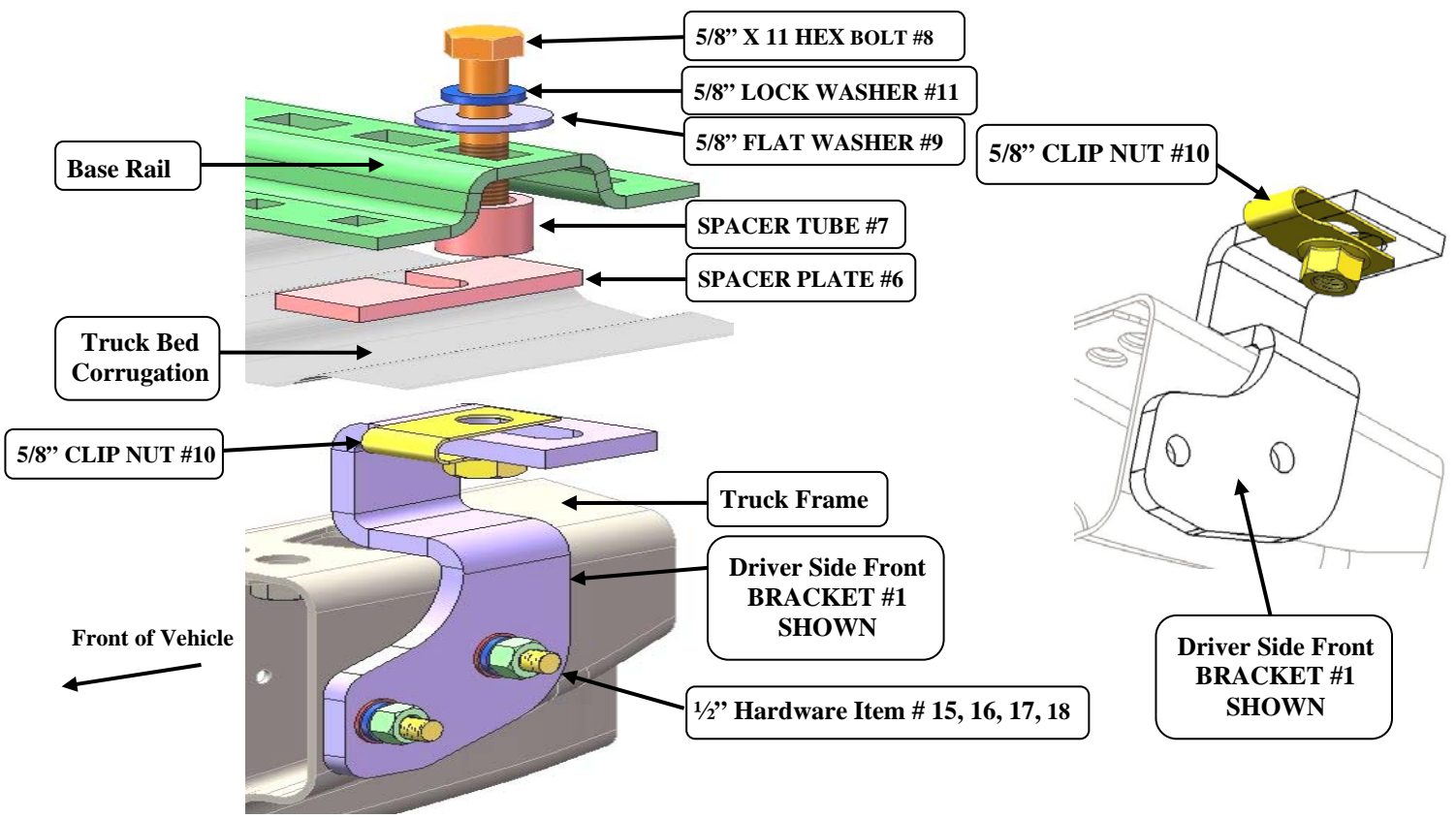


Figure: 8 DRIVER SIDE FRONT SHOWN

8. Install spacers (part # 6 & 7) and 5/8 hardware (part # 8, 9, 10 & 11) as shown. Place the clip nuts on the brackets as shown.
9. Tighten all 1/2" attachment bolts to 75 ft-lbs torque. Tighten both 7/16" U-Bolts to 35 ft-lbs torque. Failure to tighten bolts as described may result in fastener loss or failure.
10. Check each base rail hitch pin for freedom of movement before tightening the 5/8" base rail bolts. Adjust uprights, if necessary, by placing shim 31582 or 30243 between the upright and the cross member to obtain free pin movement. See Figure 9. Shims 31582 & 30243 sold separately

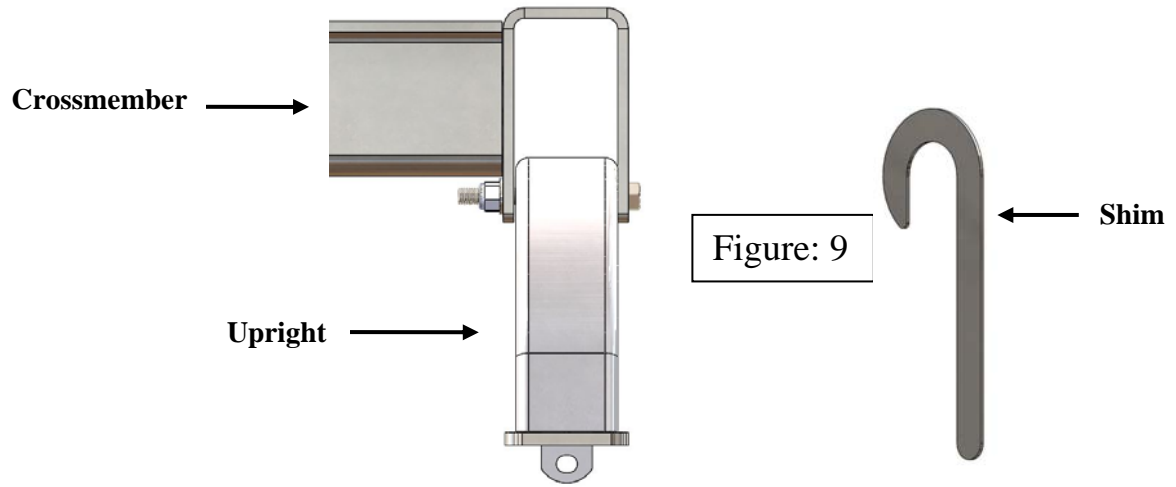


Figure: 9

10. Torque the 5/8"-11 hex head **bolt** to 150 ft-lbs. **DO NOT** apply torque to the nut portion of the clip nuts. You will **DAMAGE** it.

#31564 CUSTOM BRACKET KIT
FORD F-150



HUSKY
TOWING PRODUCTS

WWW.HUSKYTOW.COM

Designed & tested in the USA & Made in China for /
Conçu et testé aux É.-U. et fabriqué en Chine
DTS Manufacturing, Wilsonville, OR 97070

P.O. #:



The date code for this product is located on the UPC label

Please retain this info for your records.

Warranty Terms:

5 Year Limited Warranty:

This warranty applies solely to Husky 5th Wheel Installation Kit manufactured by DTS Mfg. for Husky Towing Products.

Husky Towing Products and DTS Mfg. make no guarantees or warranties for products not manufactured by DTS Mfg. Such products are covered solely under any applicable warranty of the manufacturer. It is always recommended that the operating instructions and guarantee instructions provided by the manufacturer are followed.

DTS Mfg. warrants its products to be free from manufacturing and material defects to the original purchaser for the length of warranty stated above from the date of retail purchase. If any products are found to have a manufacturing or material defect, the product will be replaced or repaired at the option of Husky Towing Products and DTS Mfg. with proof of purchase by the original purchaser. The original purchaser shall pay all transportation and shipping costs associated with the return of the defective product and the defective product shall become the property of DTS Mfg.

The Warranty applies to DTS Mfg. products used for individual and recreational purposes. Commercial usage of the DTS Mfg. products limits the warranty to 90-days from date of purchase.

The Warranty applies only to DTS Mfg. products which are found to be defective in manufacturing or material. This warranty does not apply to normal wear and tear of the finished placed on DTS Mfg. products.

Husky Towing Products and DTS Mfg. are not responsible for any labor costs incurred for removal or replacement of the defective product.

Husky Towing Products and DTS Mfg. are not responsible for repair or replacement of any product under the limited warranty where the product was improperly installed, misapplied, altered, abused, neglected, overloaded, misused or damaged as a result of an accident, including any use of the product not in accordance with all product operating and safety instructions.

Without limiting the generality of the foregoing, Husky Towing Products and DTS Mfg. shall under no circumstances be liable for any incidental or consequential loss or damage whatsoever arising out of, or in any way relating to any such breach of warranty or claimed defect in, or non-performance of the products. Some states do not allow the exclusion or limitation of incidental or consequential damages, so the above exclusion or limitation may not apply to you.

This limited warranty gives you specific legal rights, and you may also have other rights that vary from state to state.