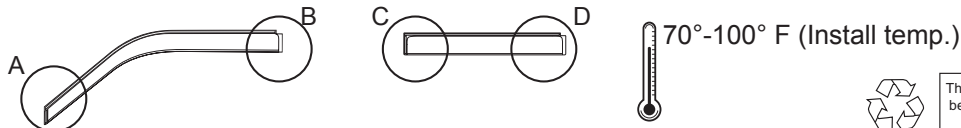


STAMPEDE™ AUTOMOTIVE ACCESSORIES SIDEWIND DEFLECTOR INSTALLATION and CLEANING

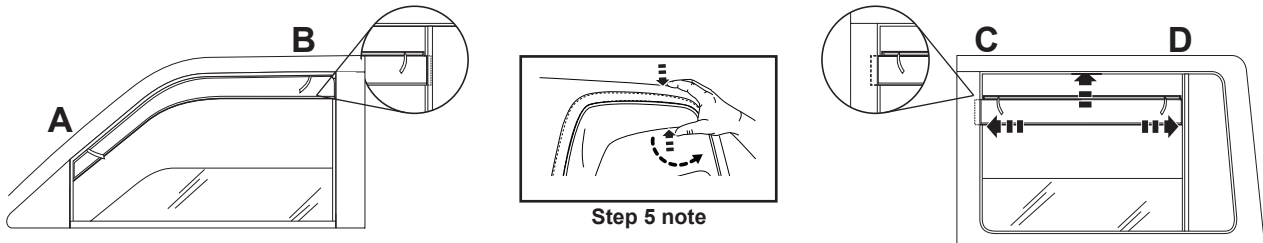
I - Sheet Number STMPD148 Rev.A



The material that your product is made from can be recycled. Please also consider recycling the packaging that your product came in.



- 1 Roll down window. Buff the inside felt surface with Scotch-Brite™ pad. Then clean with alcohol pad.
- 2 Remove tape liner from front flange. Peel back 2" of tape liner from each end of top flange.
- 3 Insert visor rear flange first. Rear flange inserts between the trim and the exterior surface. The front & top flange slides into the window channel.
- 4 Apply pressure to all flange edges to ensure proper adhesion. Remove tape liner by pulling on free ends.
- 5 **NOTE:** It is necessary to both hold the visor up into the window channel **AND** pull the bottom of the visor slightly outward while raising the glass to seat visor properly. (See illustration below.)
- 6 Continue to apply pressure to ensure that the visor remains properly seated inside the window channel as window is slowly closed. Leave window up for 72 hours to secure visor to window channel.
- 7 Install the rear visor using the same preparation and installation methods as front visor. Note that the top & rear flanges slide into the window channel, and the front flange fits between the rubber & window frame.

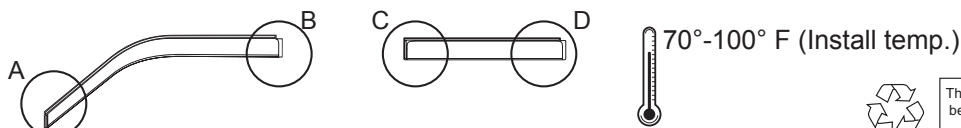


Step 5 note

IMPORTANT: Clean with a **SOFT** cloth and soap and water **ONLY!** Using abrasive cleaners, chemicals, or solvents will **VOID** the warranty on this product.
Stampede Automotive Products • Visit us at stampedeproducts.com • 800-858-5634

STAMPEDE™ AUTOMOTIVE ACCESSORIES SIDEWIND DEFLECTOR INSTALLATION and CLEANING

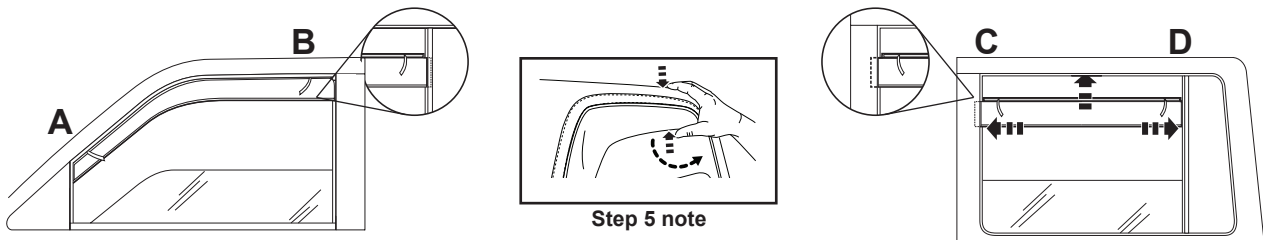
I - Sheet Number STMPD148 Rev.A



The material that your product is made from can be recycled. Please also consider recycling the packaging that your product came in.



- 1 Roll down window. Buff the inside felt surface with Scotch-Brite™ pad. Then clean with alcohol pad.
- 2 Remove tape liner from front flange. Peel back 2" of tape liner from each end of top flange.
- 3 Insert visor rear flange first. Rear flange inserts between the trim and the exterior surface. The front & top flange slides into the window channel.
- 4 Apply pressure to all flange edges to ensure proper adhesion. Remove tape liner by pulling on free ends.
- 5 **NOTE:** It is necessary to both hold the visor up into the window channel **AND** pull the bottom of the visor slightly outward while raising the glass to seat visor properly. (See illustration below.)
- 6 Continue to apply pressure to ensure that the visor remains properly seated inside the window channel as window is slowly closed. Leave window up for 72 hours to secure visor to window channel.
- 7 Install the rear visor using the same preparation and installation methods as front visor. Note that the top & rear flanges slide into the window channel, and the front flange fits between the rubber & window frame.



Step 5 note

IMPORTANT: Clean with a **SOFT** cloth and soap and water **ONLY!** Using abrasive cleaners, chemicals, or solvents will **VOID** the warranty on this product.
Stampede Automotive Products • Visit us at stampedeproducts.com • 800-858-5634