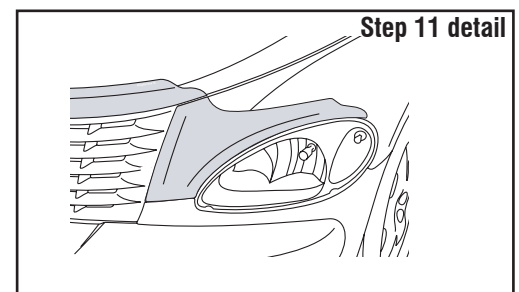
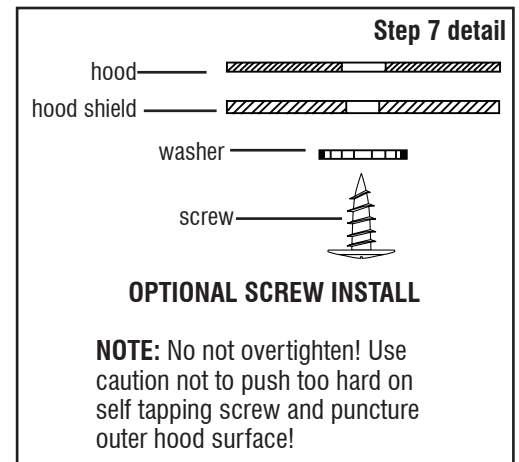
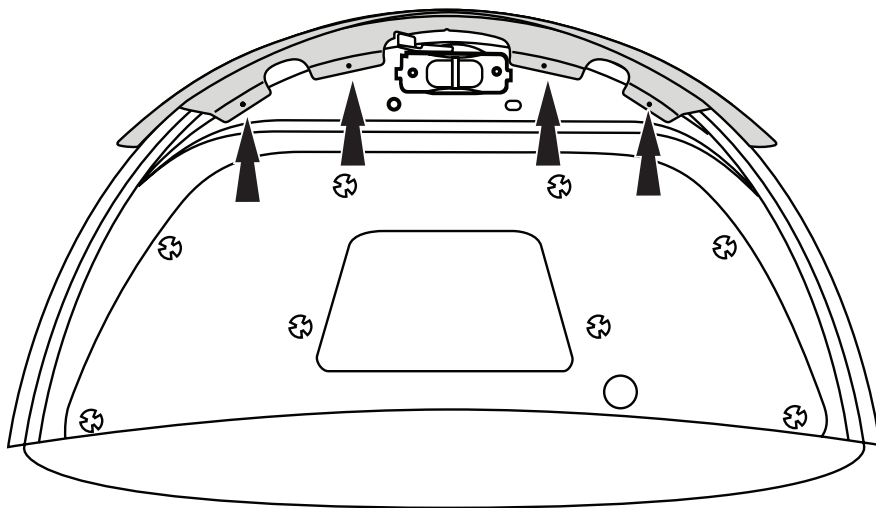


1. Open hood.
2. Clean the mounting location on the underside of hood with an alcohol pad.
3. Expose 2" (5 cm) of tape liner from each end of the flanges on the hood shield.
4. Align hood shield center point with center of hood. Press firmly to adhere previously exposed tape to hood and verify position.
5. Remove remaining tape liner by pulling on free ends.
6. Press firmly along tape flanges to ensure proper adhesion.
7. **OPTIONAL:** Install (4) self tapping screws through the holes on hood shield. A power screwdriver is recommended but once the screw penetrates the inside metal panel use a regular phillips screwdriver the remainder of the way. **Do not overtighten.** (See detail below.)
8. Close hood.
9. **Fender Protector Installation:** Clean mounting location above headlights and beside grill.
10. Expose 2" (5 cm) of tape liner from each end of the flanges on the fender protector.
11. Align fender protector with fender. Press firmly to adhere previously exposed tape to fender and verify position. (See detail below.)
12. Remove remaining tape liner by pulling on free ends.
13. Press firmly along tape flanges to ensure proper adhesion.
14. Apply bump ons as indicated. **Repeat steps 9-14 for passenger side.**



IMPORTANT: Before driving, ensure the hood shield is properly secured to vehicle. Clean with a **SOFT** cloth and soap and water **ONLY!** Using abrasive cleaners, chemicals, or solvents will **VOID** the warranty on this product.