



300 HUEY LENARD LOOP | WEST MONROE | LA 71292  
 OFFICE: 318-397-3000 | FAX: 318-397-3040  
 SERVICE & TECH SUPPORT: 800-551-4955  
 SUPERLIFT.COM



## 2018-19 JEEP WRANGLER JL 2.5" Spacer Kit with Shock Extensions INSTALLATION INSTRUCTIONS

Engineered for 2018-19 Jeep Wrangler JL  
 Both 2WD & 4WD models,  
 Both 2-Door & Unlimited 4-Door models,  
 Includes Sahara, Sport, Sport S & Rubicon

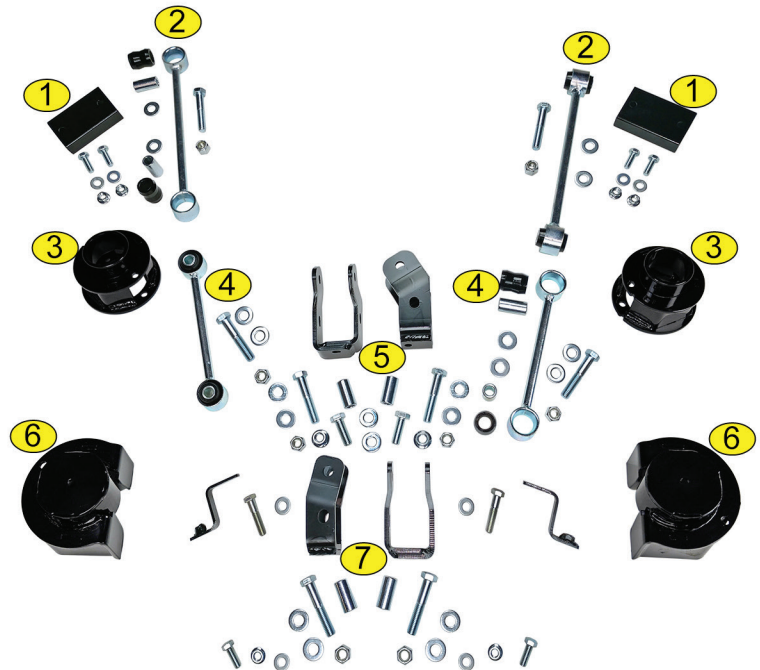


**CAUTION:** MAKE SURE YOU HAVE THE CORRECT LIFT FOR YOUR VEHICLE:  
 Double check the Year, Make, Model, Lift Height and KIT Part Numbers.

**NOTE:** Prior to beginning the installation, OPEN the Boxes and CHECK the Included Components Compared to the Parts Breakdown. Check all parts and hardware in the box with the parts list below. Be sure you have all needed parts and know where they install.

IF you find a packaging error, contact SUPERLIFT directly. Do not contact the dealer where the system was originally purchased. You will need the control number from each box when calling; this number is located at the bottom of the part number label and to the right of the bar code.

- ① Bump Stop Spacer, Rear, DR. & PA.
- ② Sway Bar End Links, Rear
- ③ Coil Spring Spacers, Rear
- ④ Sway Bar End Links, Front
- ⑤ Shock Extensions, Rear DR. & PA.
- ⑥ Coil Spring Spacers, Front
- ⑦ Shock Extensions, Rear DR. & PA.



**How to Read the Kit Breakdown Charts:**

The 'K KIT BREAKDOWN' lists the Part Numbers, Quantities & Part Description of the Boxes that are included in the K KIT. The 'KIT BREAKDOWN' lists Part Numbers, Quantities & Part Description of the Individual Components & Hardware Bags that are included in Each Box. The 'HARDWARE BREAKDOWN' lists the Part Numbers, Quantities & Part Description of the Individual Components.

KIT BREAKDOWN		
Kit Part Number	5803	
Part Number	Qty.	Part Description
55-26-5825	2	Bracket, Coil Spring Spacer, Front, 2.5"
55-27-5825	2	Bracket, Coil Spring Spacer, Rear, 2.5"
55-13-5825	2	Shock Spacer, Front
55-16-5825	2	Sway Bar Link, Front
55-07-5800	2	Bump Stop, Rear
44-17-5040	2	Sway Bar Link, Rear
55-14-5825	2	Shock Spacer, Rear
77-5800	1	Hardware Bag, Shock Spacers
77-5801	1	Hardware Bag, Sway Bar Links
77-5803	1	Hardware Bag, Coil Spring Spacers

HARDWARE BAG BREAKDOWN						
Kit Part Number	77-5800			Kit Part Number	77-5801A	
Part Number	Qty.	Part Description	Part Number	Qty.	Part Description	
12C5FN	2	1/2" Nut, Flange Coarse Thread	12MNN	4	12mm Nut, Nyloc Coarse Thread	
12C5NN	4	1/2" Nut, Nyloc Coarse Thread	12MFW	8	12mm Flat Washer	
12SW	10	1/2" Washer, SAE	12MX1.75X70CS	2	12mm x 70mm Bolt, 1.75 Coarse Thread	
12X112C8CS	2	1/2" x 1-1/2" Bolt, Coarse Thread	12MX1.75X80CS	2	12mm x 80mm Bolt, 1.75 Coarse Thread	
12X234C8CS	2	1/2" x 2-3/4" Bolt, Coarse Thread				
12X314C8CS	2	1/2" x 3-1/4" Bolt, Coarse Thread	Kit Part Number	77-5803		
24-5704	4	Sleeve, 0.75" OD x 0.50" ID x 1.50" Long	Part Number	Qty.	Part Description	
38C5FN	2	3/8" Flange Nut, Coarse Thread	38SW	8	3/8" Washer, SAE	
38SW	2	3/8" Washer, SAE	38C5FN	6	3/8" Flange Nut, Coarse Thread	
38X114C8CS	2	3/8" x 1-1/4" Bolt, Coarse Thread	38X134C8CS	4	3/8" x 1-3/4" Bolt, Coarse Thread	
			38X114C8CS	2	3/8" x 1-1/4" Bolt, Coarse Thread	
Kit Part Number	77-5801			38X3C8CS	2	3/8" x 3" Bolt, Coarse Thread
Part Number	Qty.	Part Description	55-08-5800	2	3/8" Nut, Tab	
01-60418	8	Bushing, Hourglass	38C5N	2	3/8" Nut, Coarse Thread	
24-5704	8	Sleeve, 0.75" OD x 0.50" ID x 1.50" Long				





300 HUEY LENARD LOOP | WEST MONROE | LA 71292  
 OFFICE: 318-397-3000 | FAX: 318-397-3040  
 SERVICE & TECH SUPPORT: 800-551-4955  
 SUPERLIFT.COM



## 2018-19 JEEP WRANGLER JL 2.5" Spacer Kit with Shock Extensions INSTALLATION INSTRUCTIONS

**THANK YOU FOR CHOOSING  
 SUPERLIFT FOR ALL  
 YOUR SUSPENSION NEEDS!**



### **Read And Understand All Instructions And Warnings Prior To Installation Of System AND Operation Of Vehicle.**

#### **INTRODUCTION BEFORE INSTALLATION...**

Installation requires a professional mechanic. In addition to these instructions, professional knowledge of disassembly / reassembly procedures and post installation checks must be known.

PRIOR to beginning, inspect the vehicles steering, driveline, and brake systems, paying close attention to the suspension link arms and bushings, sway bars and bushings, tie rod ends, pitman arm, idler arm, ball joints and wheel bearings. Also check the steering sector-to-frame and all suspension-to-frame attaching points for stress cracks. The overall vehicle must be in excellent working condition; repair or replace all worn parts.

Read instructions several times before starting.

Read each step completely as you go.

**Be sure you have all needed parts and know where they install.**

#### **⚠ NOTES:**

- Front end alignment is necessary.
- A foot-pound torque reading is given in parenthesis ( ) after each appropriate fastener.
- Tool and Wrench/Socket size is given in brackets { } after each appropriate step.
- Always wear safety glasses when using power tools.
- Prior to attaching components, be sure all mating surfaces are free of grit, grease, excessive undercoating, etc.
- Do not fabricate any components to gain additional suspension height.
- A factory service manual should be on hand for reference.
- Due to payload options and initial ride height variances, the amount of lift is a 'base figure'. Final ride height dimensions may vary in accordance to original vehicle stance.

**BEFORE YOU DRIVE...**

Check all fasteners for proper torque. Check to ensure for adequate clearance between all rotating, mobile, fixed, and heated members. Verify clearance between exhaust and brake lines, fuel lines, fuel tank, floor boards and wiring harness. Check steering components for clearance.

Test and inspect brake system. Perform steering sweep to ensure front brake hoses have adequate slack and do not contact any rotating, mobile or heated members. Inspect rear brake hoses at full extension for adequate slack. Failure to perform hose check/replacement may result in component failure.

Perform head light check and adjustment.

**⚠️ WARNING:** It is the ultimate buyer’s responsibility to have all bolts / nuts checked for tightness after the first 100 miles and then every 1000 miles. The steering, suspension and driveline systems, plus wheel alignment should be inspected by a qualified professional mechanic at least every 3000 miles.

**TIRES & WHEELS...**

Larger rim and tire combinations may increase leverage on suspension, steering, and related components. When selecting combinations larger than OE, consider the additional stress you could be inducing on the OE and related components.

**⚠️ NOTE:** Stock 17” and 18” Wheels Will Fit back on the vehicle once this suspension system is installed.

**⚠️ WARNING:**  
 ANY larger or wider tire & wheel combination other than listed Will Require Vehicle Trimming.

5803 - TIRE SIZE SPECIFICATIONS			
Tire Size	Wheel	Backspacing (INCH)	Offset (MM)
35 x 12.50	17 x 9	4.00-4.75	-
35 x 12.50	18 x 9	4.00-4.75	-
35 x 12.50	20 x 9	4.00-4.75	-

Maximum BS/Offset Listed

RUBICON ONLY- TIRE SIZE SPECIFICATIONS			
Tire Size	Wheel	Backspacing (INCH)	Offset (MM)
37 x 12.50	17 x 9	4.00-4.75	-
37 x 12.50	18 x 9	4.00-4.75	-
37 x 12.50	20 x 9	4.00-4.75	-

Maximum BS/Offset Listed

**TOOLS & TECH..**

Tools		
Miscellaneous Tools	Wrench / Socket Sizes	
	Standard	Metric
Floor Jacks		
Jack Stands	9/16"	8mm
Adjustable Pliers	3/4"	13mm
Torque Wrench		15mm
Flathead Screwdriver		18mm
Ball Peen Hammer		21mm
Plastic Fastener Removal Tool		22mm
Tie Rod Puller Tool		6mm Allen

Step	Part Number	Qty. Per Kit	Description	New Attaching Hardware	Qty. Per Bracket	Hardware Bag Number
12	55-26-5825	2	Bracket, Coil Spring Spacer, Front, 2.5"	3/8" Washer, SAE	1	77-5803
				3/8" x 3" Bolt, Coarse Thread	1	
				3/8" Nut, Tab	1	
13	55-13-5825	2	Shock Spacer, Front	24-5704 Sleeve, 0.75" OD x 0.50" ID x 1.50" Long	1	77-5800
				3/8" x 1-1/4" Bolt, Coarse Thread	1	
				3/8" Flange Nut, Coarse Thread	1	
				3/8" Washer, SAE	1	
				1/2" x 3-1/4" Bolt, Coarse Thread	1	
				1/2" Washer, SAE	1	
1/2" Nut, Nyloc Coarse Thread	1					
21	55-16-5825	2	Sway Bar Link, Front	01-60418 - Bushing, Hourglass	2	77-5801
				24-5704 - Sleeve, 0.75" OD x 0.50" ID x 1.50" Long	2	
				12mm x 80mm Bolt, 1.75 Coarse Thread	1	77-5801A
				12mm Flat Washer	2	
				12mm Nut, Nyloc Coarse Thread	1	
33	55-07-5800	2	Bump Stop, Rear	3/8" x 1-3/4" Bolt, Coarse Thread	2	77-5803
				3/8" Washer, SAE	2	
				3/8" Flange Nut, Coarse Thread	2	
34	55-27-5825	2	Bracket, Coil Spring Spacer, Rear, 2.5"	3/8" x 1-1/4" Bolt, Coarse Thread	2	77-5803
				3/8" Washer, SAE	2	
				3/8" Flange Nut, Coarse Thread	2	
35	44-17-5050	2	Sway Bar Link, Rear	01-60418 - Bushing, Hourglass	2	77-5801
				24-5704 - Sleeve, 0.75" OD x 0.50" ID x 1.50" Long	2	
				12mm x 70mm Bolt, 1.75 Coarse Thread	1	77-5801A
				12mm Flat Washer	2	
				12mm Nut, Nyloc Coarse Thread	1	
36	55-14-5825	2	Shock Spacer, Rear	24-5704 Sleeve, 0.75" OD x 0.50" ID x 1.50" Long	1	77-5800
				1/2" x 1-1/2" Bolt, Coarse Thread	1	
				1/2" Washer, SAE	2	
				1/2" Nut, Flange Coarse Thread	1	
				1/2" x 2-3/4" Bolt, Coarse Thread	1	
				1/2" Nut, Nyloc Coarse Thread	1	

**NOTE:** Use the check-off box  found at each step to help you keep your place. Two  denotes that one check-off box is for the Driver Side (Left) and one is for the Passenger Side (Right). Unless otherwise noted, always start with the Driver Side.

## FRONT DISASSEMBLY

**NOTE:** Save ALL factory components and hardware for reuse, unless noted.

**TECH TIP** As you uninstall OEM parts, Place the Factory Hardware Back into the Factory Location. This will save you time and make the install easier to complete.

### 1. PREPARE VEHICLE FOR FRONT...

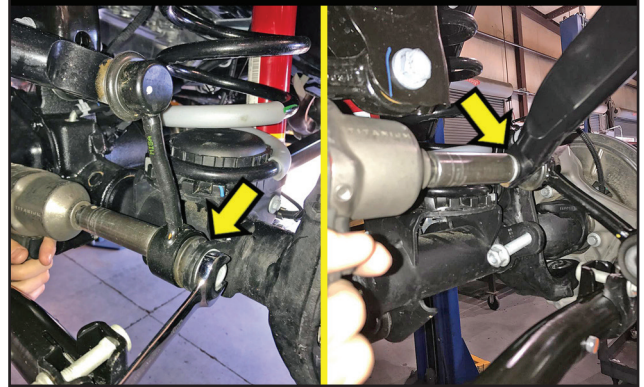
- Disconnect the battery.
- Chock rear tires and place transmission in neutral. Raise the front of vehicle with a jack and secure a jack stand beneath each frame rail. Ease the frame down onto the stands, place transmission in Low Gear for Manual Transmission or Park for Automatic. Remove the front wheels & tires. {Lug Nuts 22mm Deep Well Socket}

### REMOVE SWAY BAR LINKS...

- 2. [Illustration 1] Remove the factory hardware from the lower sway bar link mount at the axle mount. {Bolt: 18mm, Nut: 18mm} Retain factory hardware.
- [Illustration 1] Remove the factory hardware from the upper sway bar link at the sway bar. {6mm Allen and an 18mm wrench}

**Illustration 1**

### Remove Sway Bar Links



### DISCONNECT DRAGLINK FROM PITMAN ARM...

- 3. [Illustration 2] Loosen, but do not remove the factory nut from the draglink where it attaches to the pitman arm. {21mm} **TECH TIP:** Rotate the sway bar upward or downward as needed.

Using a tie rod puller tool, separate the draglink from the pitman arm. Be careful. Do not let the draglink fall abruptly. It could cause damage.

If you do not have a puller, you can use the method of striking the pitman arm near the draglink to dislodge the draglink. Strike the pitman arm portion only.

Remove the draglink nut and save for re-install.

### DISCONNECT TRACK BAR AT AXLE MOUNT...

- 4. [Illustration 3] Remove the factory bolt and tab nut from the track bar at the lower axle mount. {21mm} Retain the factory hardware.

**Illustration 2**

### Disconnect Draglink from Pitman Arm...

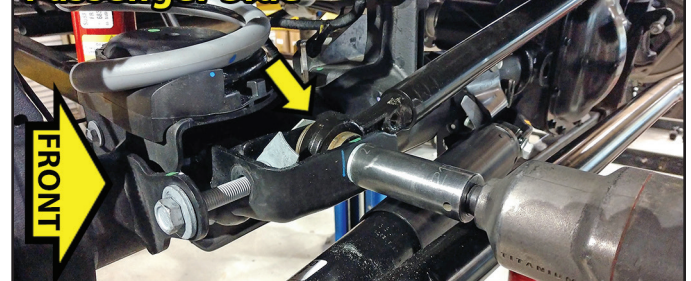
#### Driver Side



**Illustration 3**

### Disconnect Track Bar at Axle Mount...

#### Passenger Side



**RUBICONS: DISCONNECT FRONT LOCKER...**

□ 5. [Illustration 4] **RUBICON Models:** The front locker must be disconnected so the wiring connectors are not over-extended.

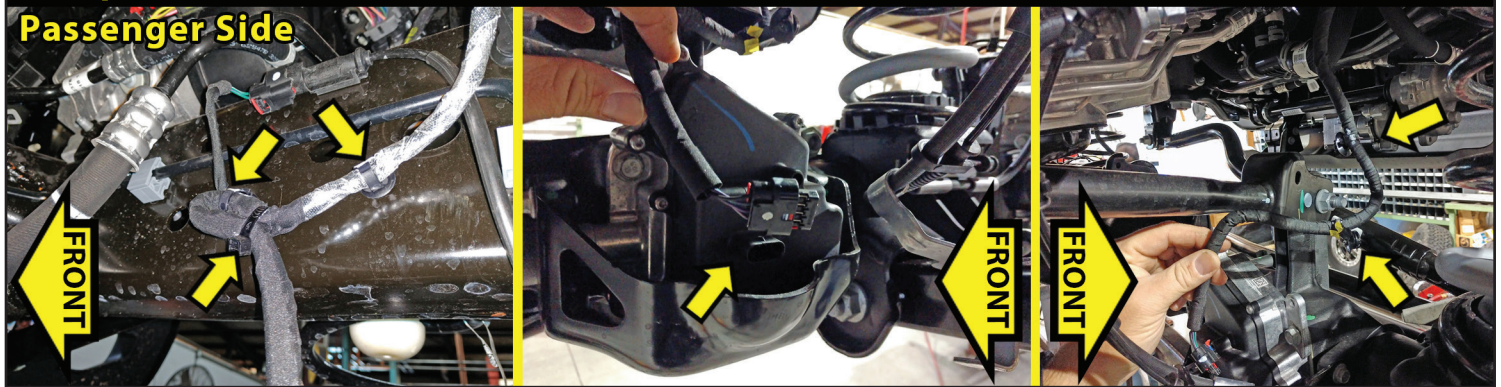
On the Driver Side located on the 'inner' frame rail above the axle, Unplug the harness plug. Unclip the wiring harness clips from the frame. [Plastic Fastener Removal Tool]

**UNCLIP CENTER AXLE DISCONNECT (CAD)...**

□ 6. [Illustration 5] The Center Axle Disconnect or otherwise known as the CAD, must be disconnected so the wiring connectors are not over-extended.

On the Passenger Side located on the 'inner' frame rail above the axle, remove the zip tie from the wiring harness. Unclip the wiring harness clips from the frame. [Plastic Fastener Removal Tool]

At the Passenger Side axle, unplug the CAD harness. Unclip wiring clips from front axle. [Plastic Fastener Removal Tool] **⚠ NOTE:** Make sure there is adequate slack on all wires.

**Illustration 5****Unclip Center Axle Disconnect (CAD)...****REMOVE BRAKE LINE BRACKET...**

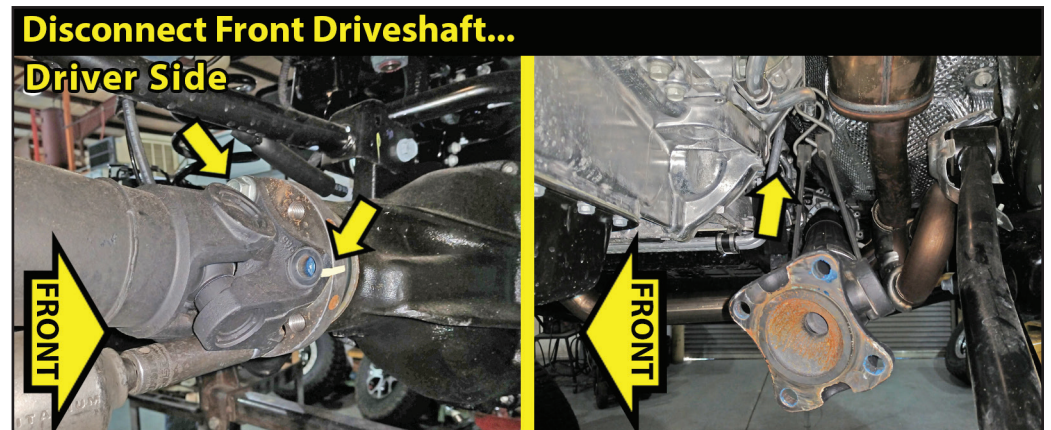
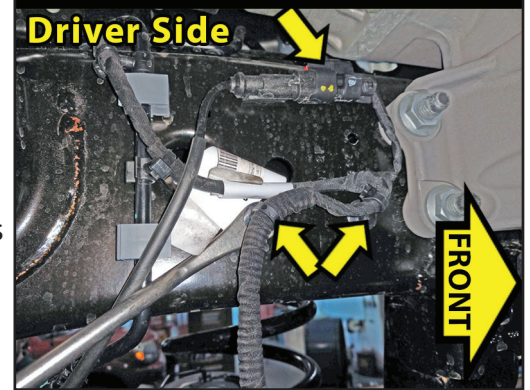
□□ 7. [Illustration 6] On the Driver Side & Passenger Side, remove the brake line bracket from the lower control arm. [15mm]

**DISCONNECT FRONT DRIVESHAFT...**

□ 8. [Illustration 7] Make an alignment mark on the front driveshaft and front differential input yoke.

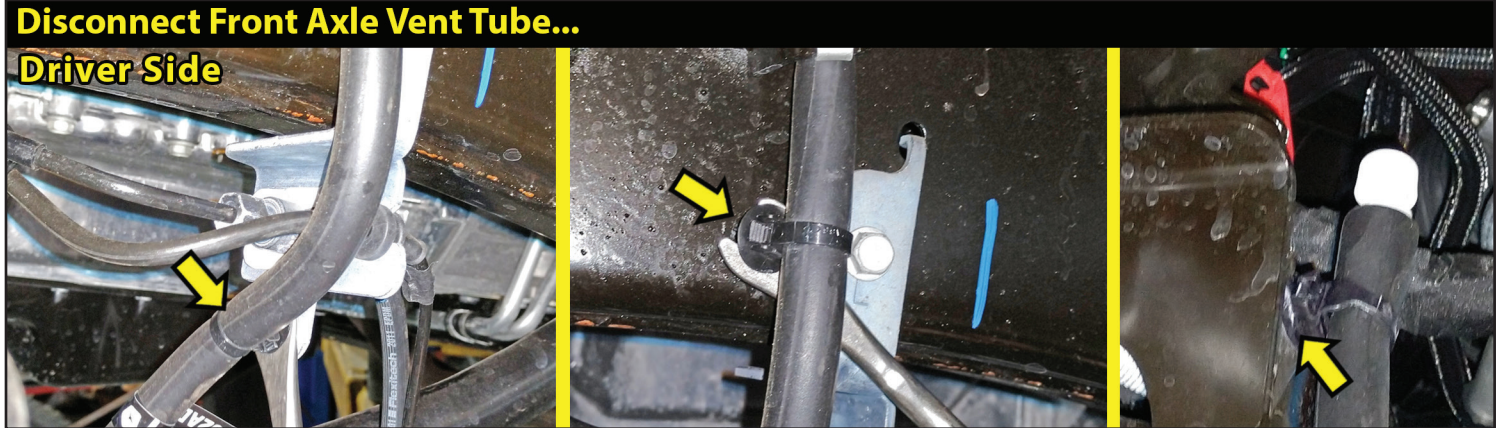
Remove the four bolts from the yoke. {15mm} Save the driveshaft hardware.

Remove the front driveshaft from the differential. Secure the driveshaft safely up and out of the way with a bungee, mechanic's wire or other method.

**Illustration 6****Illustration 7****Illustration 4****Disconnect Front Lockers...**

**DISCONNECT FRONT AXLE VENT TUBE...**

□ 9. [Illustration 8] Locate the brake line bracket attached on the Driver Side frame to the rear of the shock tower. [Plastic Fastener Removal Tool] Unclip the axle vent hose clip from the brake line bracket. Follow the vent tube up and unclip the frame attachment. [Plastic Fastener Removal Tool] Continue to follow the vent tube up and unclip from the shock tower that is behind the wheel well plastic. [Plastic Fastener Removal Tool]

**Illustration 8****REMOVE FRONT SHOCKS...**

□□ 10. [Illustration 9]

**NOTE:** If you are installing the Shock Spacer Kit, you ONLY need to disconnect the lower shock mount.

Disconnect the shock from the upper shock tower mount. {18mm socket}

Disconnect the shock from the lower mount at the axle. {18mm wrench \ 18mm socket}

Remove shocks. Retain the shocks and shock mount hardware.

**REMOVE FRONT COIL SPRINGS...**

□□ 11. [Illustration 10] Lower the axle enough to facilitate removing the front coil springs. Remove the coil springs. Remove the lower coil spring mount pad.

**FRONT ASSEMBLY****INSTALL FRONT SPRING SPACERS & COIL SPRINGS...**

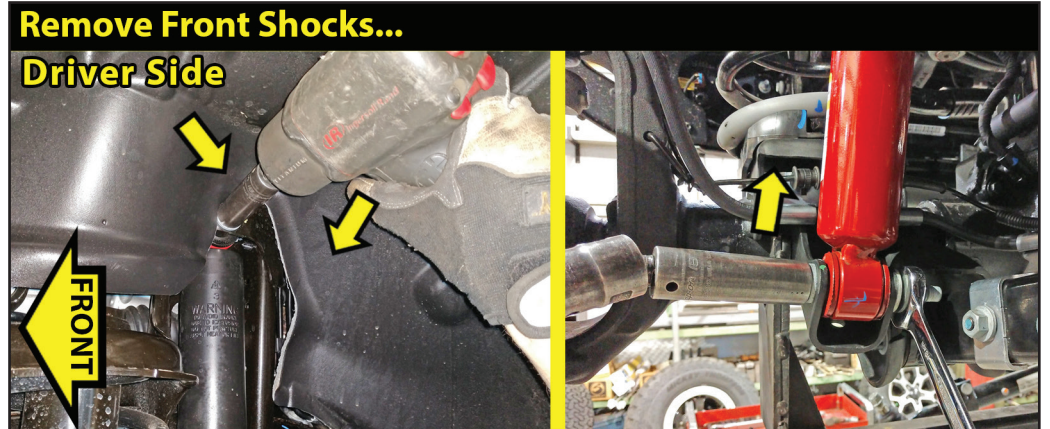
□□ 12. [Illustration 11] Locate the (2) SUPERLIFT coil spring spacer brackets, (#55-26-5825). These brackets are not side specific.

Locate Hardware Bag #77-5803. Hardware PER Side: (1) 3/8" x 3" Bolt, Coarse Thread, (1) 3/8" SAE Washer & (1) #55-08-5800 - 3/8" Nut, Tab

Locate the lower coil spring mount pad. Install the pad over the spring spacer.

Insert the 3/8" washer onto the 3" bolt. Insert the bolt through the spring mount pad and into the top of the #55-26-5825 spacer bracket. Place the spacer onto the axle housing. Align the 3" bolt into the axle mount hole.

Reach under the spring mount pad and above the axle tube to start the #55-08-5800 - 3/8" tab nut onto the spacer bracket bolt. Tighten the lower spring mount pad & coil spring spacer bracket into place. {9/16" socket} (25)

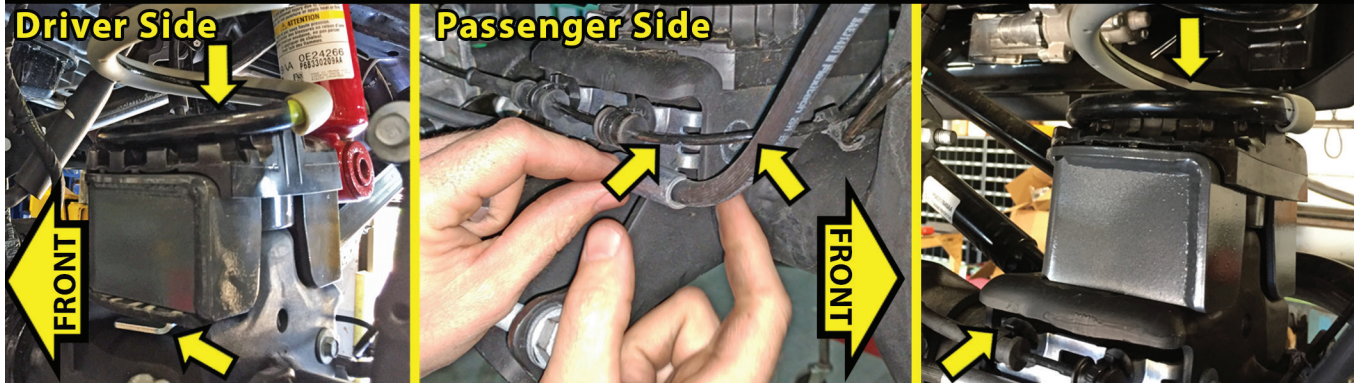
**Illustration 9****Illustration 10**



**TECH TIP** On the Passenger Side, it may be necessary to remove the ABS bracket to install the tab nut. At the rear of the axle above the shock mount, disconnect factory brake line bracket from axle coil spring seat. {10mm} Pull bracket rearward to allow clearance. **NOTE:** Do not over extend brake lines or ABS lines. Once spring spacer is tight, reinstall ABS line mounting bracket onto axle. {10mm} Insert the coil spring into the upper tower first. Be sure that the coils are indexed so they seat properly then raise the axle enough to hold the coil springs in place.

### Illustration 11

#### Install Front Spring Spacer & Coil Springs...



#### INSTALL FRONT SHOCK SPACER INSTALL...

□□ 13. [Illustration 12] Locate the (2) SUPERLIFT front shock spacers (#55-13-5825). They are not side specific. Locate Hardware Bag #77-5800. Hardware PER Side: (1) #24-5704 Sleeve, 0.75" OD x 0.50" ID x 1.50" Long, (1) 3/8" x 1-1/4" Bolt, Coarse Thread, (1) 3/8" SAE Washer, (1) 3/8" Flange Nut, Coarse Thread (1) 1/2" x 3-1/4" Bolt, Coarse Thread, (1) 1/2" SAE Washer & (1) 1/2" Nyloc Nut, Coarse Thread.

Swing the shock rearward and up out of the way. Place the SUPERLIFT front shock spacer on the factory shock mount with pointing rearward and up. Insert the 3/8" SAE washer onto the 3/8" x 1-1/4" bolt. Insert the bolt/washer up through the bottom hole of the bracket/factory mount. Install 3/8" flange nut. {9/16 wrench / 9/16 socket}

**TECH TIP** The bottom hole of the factory shock mount may have to be deburred before the bolt is installed easily. Use a 3/8" drill bit to deburr the hole if needed.

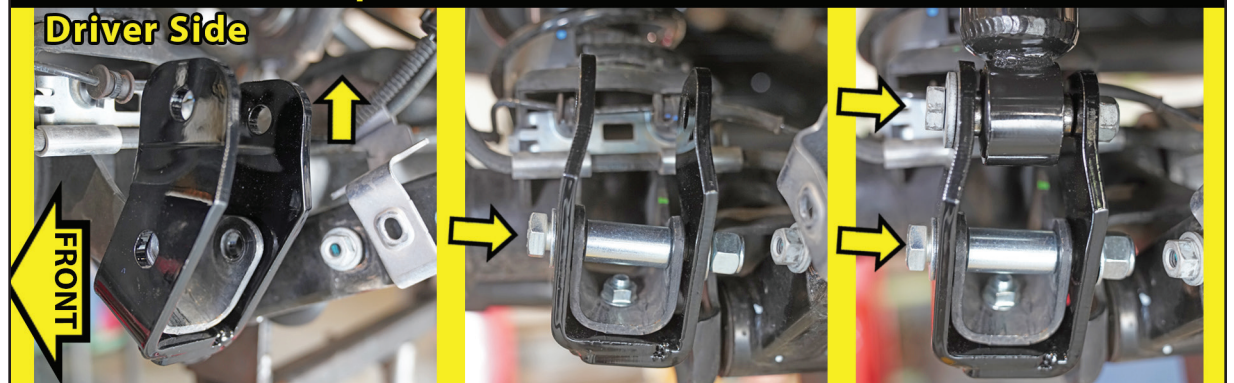
Attach 1/2" SAE Washer onto the 1/2" x 3-1/4" bolt. Insert the bolt pointing inward into the shock spacer/factory shock mount. Attach #24-5704 sleeve. Continue bolt through spacer/shock mount, then attach 1/2" SAE washer & 1/2" Nyloc nut. Snug tighten only. {3/4" wrench / 3/4" socket}

Swing factory shock into place and align with the upper hole of the spacer. Install shock with factory hardware with the bolt pointing inward. Snug tighten only. {18mm wrench \ 18mm socket}

**NOTE:** Shocks will be tightened completely when the vehicle is set on the ground.

### Illustration 12

#### Install Front Shock Spacer...



**REATTACH BRAKE LINE BRACKET...**

□ 15. [Illustration 13] On the Driver Side & Passenger Side, reattach the brake line bracket to the lower control arm. [15mm]

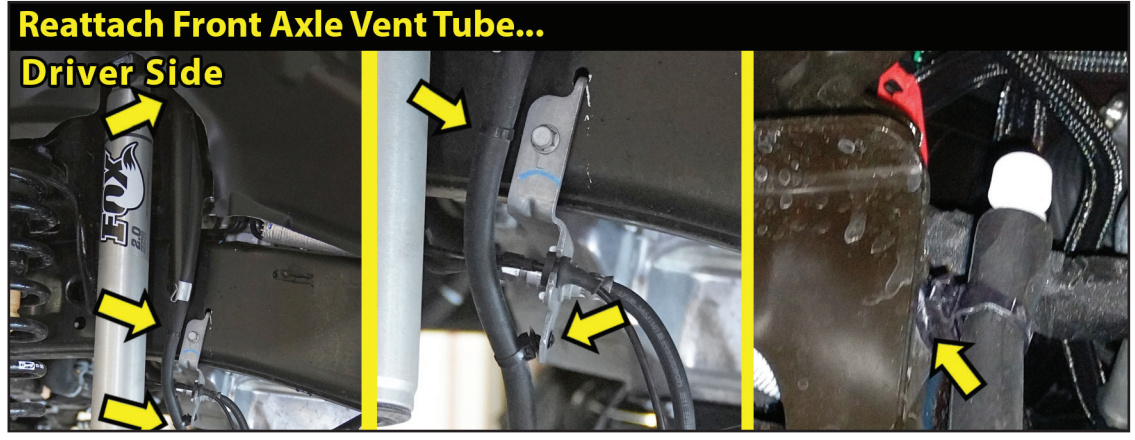
**REATTACH FRONT AXLE VENT TUBE...**

□ 16. [Illustration 14] Locate the brake line bracket attached on the Driver Side frame to the rear of the shock tower. Re-clip the axle vent hose clip to the brake line bracket. Follow the vent tube up and re-clip to the frame attachment. Continue to follow the vent tube up and re-clip to hole on the shock tower.

**Illustration 13**



**Illustration 14**



**REATTACH FRONT DRIVESHAFT...**

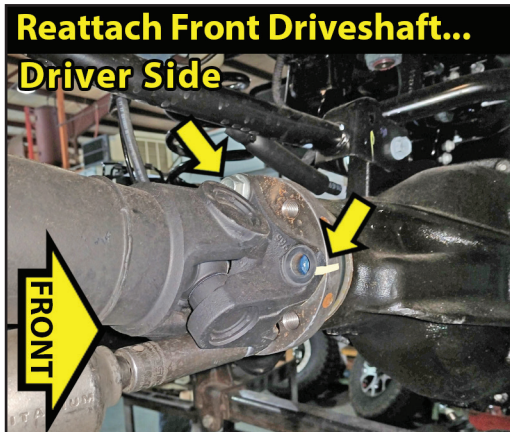
□ 17. [Illustration 15] Locate the front driveshaft factory bolts. Apply thread locking compound to the factory bolt threads before installation. Align mark on the front driveshaft and front differential input yoke, reconnect the front driveshaft to the front differential. {15mm} (81)

**TECH TIP** With the bolts in place, use a pry bar to keep the driveshaft from turning while you tighten & torque into place.

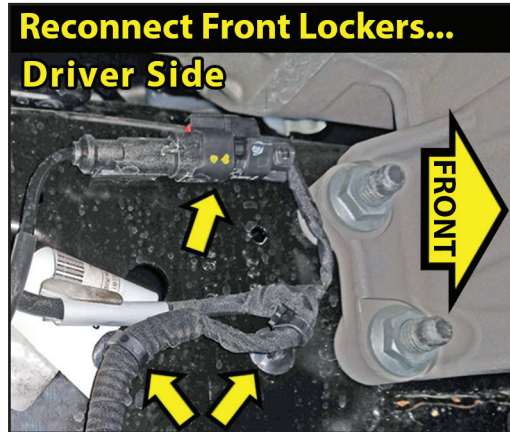
**RUBICONS: RECONNECT FRONT LOCKER...**

□ 18. [Illustration 16] **RUBICON Models:** On the Driver Side located on the 'inner' frame rail above the axle, re-clip the plug wiring harness together & re-clip back to the frame. Reconnect so the wiring connectors are not over-extended.

**Illustration 15**



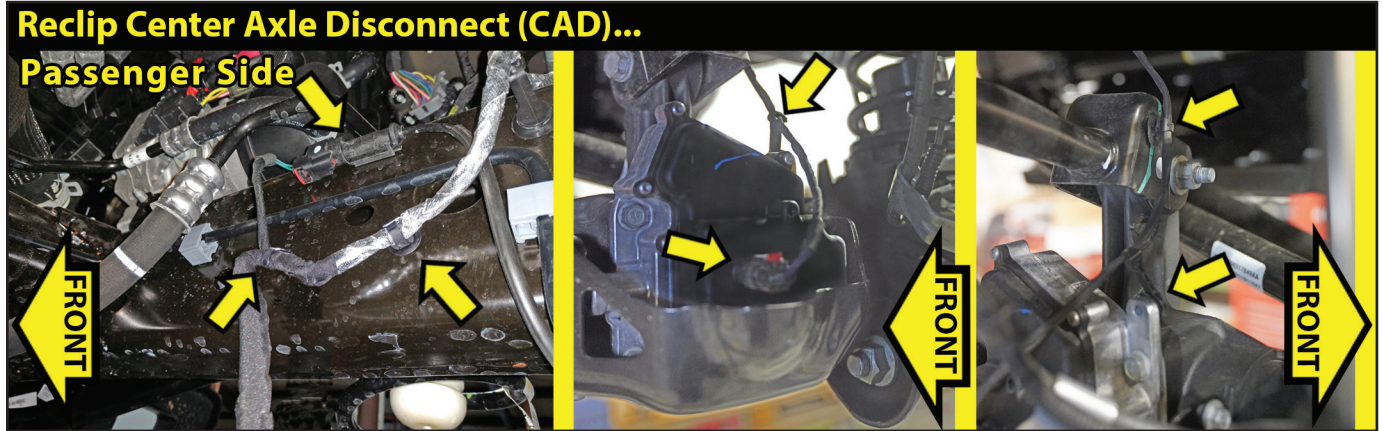
**Illustration 16**



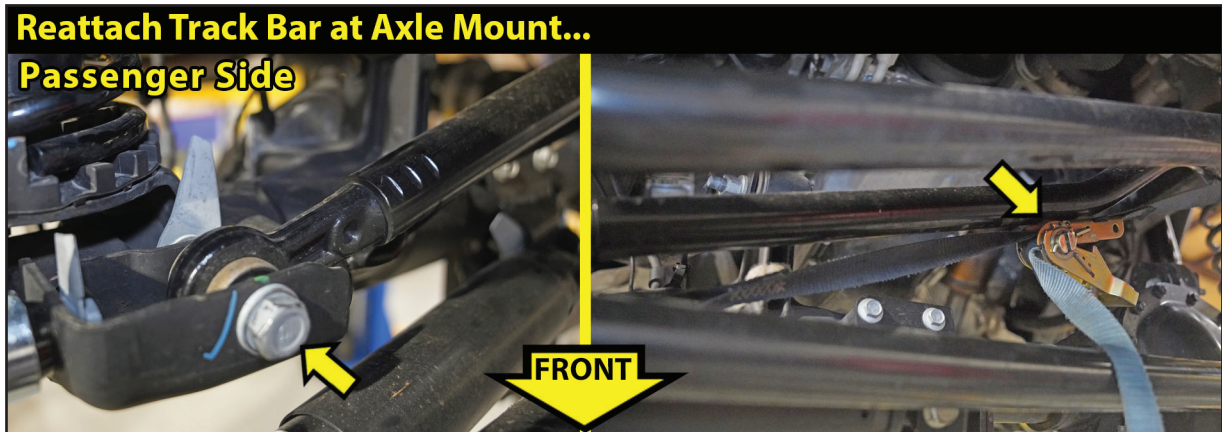
**RECLIP CENTER AXLE DISCONNECT (CAD)...**

□ 19. [Illustration 17] At the Passenger Side axle, re-plug the CAD harness.

On the Passenger Side on the 'inner' frame rail above the axle, re-clip the plug wiring harness together & re-clip back to the frame. Reconnect so the wiring connectors are not over-extended.

**Illustration 17****REATTACH TRACK BAR AT AXLE MOUNT...**

□ 20. [Illustration 18] Using the factory bolt and tab nut, reattach the track bar at the lower axle mount. {21mm} **TECH TIP** A ratchet strap will help position the track bar. Attach the ratchet strap to the track bar upper frame mount & to the lower axle mount. Ratchet the strap to align the track bar with the mount hole.

**Illustration 18****INSTALL FRONT SWAY BAR LINKS...**

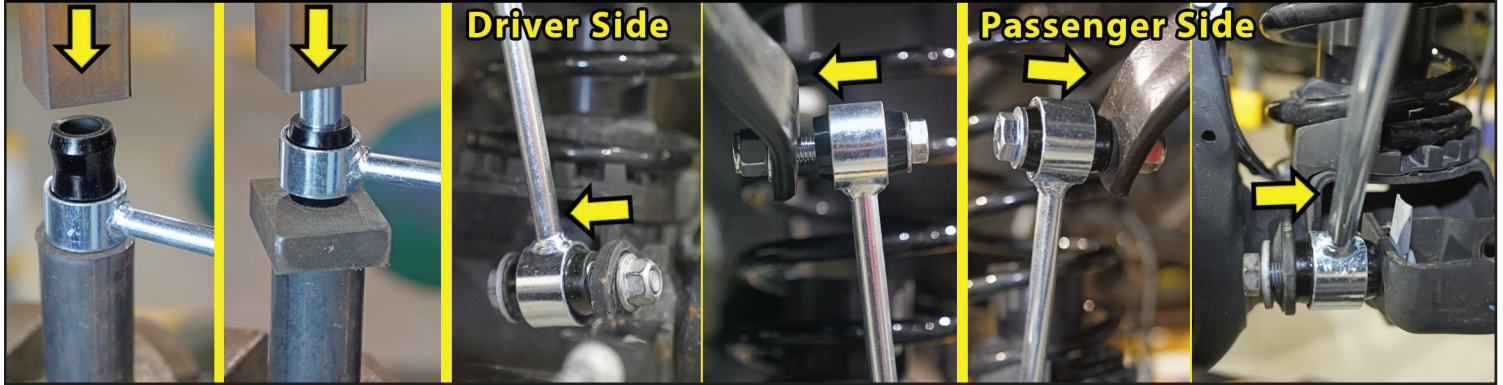
□□ 21. [Illustration 19] Locate the (2) SUPERLIFT front sway bar links (#55-16-5825). **NOTE:** These supplied front sway bar links are shorter than the supplied rear sway bar links.

Locate Hardware Bag #77-5801 & #77-5801A. Hardware PER Side: (2) 01-60418 - Bushing, Hourglass, (2) #24-5704 - Sleeve, 0.75" OD x 0.50" ID x 1.50" Long, (1) 12mm x 80mm Bolt, Coarse Thread, (2) 12mm Washer & (1) 12mm Nut, Nyloc Coarse Thread.

Lightly grease and install/press the hourglass shaped bushing and 0.50" ID sleeve into each end of the sway bar link end.

Use the factory hardware to attach the lower sway bar link mount at the axle mount. {Bolt: 18mm, Nut: 18mm}

Attach 12mm Washer onto the 12mm x 80mm bolt. Insert the bolt pointing inward into the new sway bar link. Continue bolt through sway bar, then attach 12mm washer & 12mm Nyloc nut. Snug tighten only. {19mm wrench / 19mm socket}

**Illustration 19****Install Front Sway Bar Links...****FRONT TIRES / WHEELS...**

22. [Illustration 20] Install the front tires & wheels. {Lug Nuts 22mm} (140) Lower the vehicle to the ground.

**⚠ WARNING:** When the tires / wheels are installed, always check for and remove any corrosion, dirt, or foreign material on the wheel mounting surface, or anything that contacts the wheel mounting surface (hub, rotor, etc.). Installing wheels without the proper metal-to-metal contact at the wheel mounting surfaces can cause the lug nuts to loosen and the wheel to come off while the vehicle is in motion.

Reconnect the battery.

**INITIAL FRONT CLEARANCE CHECK...**

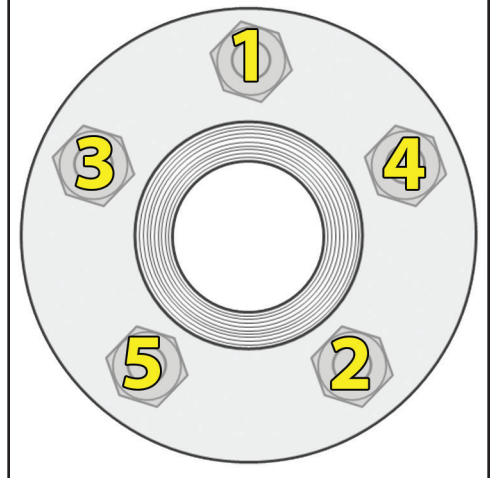
23. With the vehicle on the ground, cycle the steering lock-to-lock and check all components for proper operation and clearances. Pay special attention to the clearance between the tires / wheels and control arms, brake hoses, ABS wiring, etc.

Raise the vehicle back onto jack stands and secure as per **Step 1**. With the suspension 'hanging' at full extension travel, cycle the steering lock-to-lock and check all components for proper operation and clearances. Pay special attention to the clearance between the tires / wheels and control arms, brake hoses, ABS wiring, driveshaft-to-crossmember, etc.

Lower vehicle to the floor. Final tightening and adjustments to the front suspension installation will take place once rear lift is completed.

**Illustration 20****Lug Nut Torque Sequence...**

**Follow the Sequence Below to Torque the Lug Nuts**



**REAR INSTALLATION**

**NOTE:** Save ALL factory components and hardware for reuse, unless noted.

**24. PREPARE VEHICLE FOR REAR...**

Chock front tires and place transmission in neutral. Raise the rear of vehicle with a jack and secure a jack stand beneath each frame rail. Ease the frame down onto the stands, place transmission in Low Gear for Manual Transmission or Park for Automatic. Remove the rear wheels & tires. {Lug Nuts 22mm Deep Well Socket}

Support the rear axle with a hydraulic jack. Leave plenty of room to lower the rear axle.

**REMOVE BRAKE LINE BRACKET...**

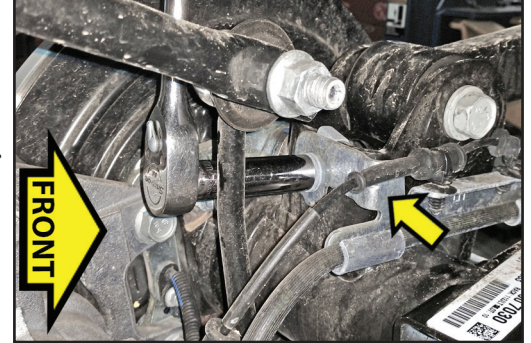
25. [Illustration 21] On the Driver Side & Passenger Side, remove the brake line bracket from the upper control arm bracket at the axle. [13mm]

**RUBICONS: DISCONNECT REAR LOCKER...**

26. [Illustration 22] **RUBICON Models:** The rear locker must be disconnected so the wiring connectors are not over-extended.

On the rear axle, unplug the locker wiring harness from the differential. Follow the wiring harness up and unclip the wiring harness clips from emergency brake cable.

Continue up the wiring harness and unclip the (2) wiring harness clips from the frame mount on the Driver Side located on the 'inner' frame rail above the axle. [Plastic Fastener Removal Tool]

**Illustration 21****Remove Brake Line Bracket...****Driver Side****Illustration 22****Disconnect Rear Locker...****DISCONNECT E-BRAKE FROM AXLE HOUSING & BRAKE ASSEMBLY...**

27. [Illustration 23] Locate the emergency brake cable on the front of the rear axle. It runs from the center of the axle out to the brake housing. Pinch the ears of the aluminum fitting to release it from the axle mount. [Pliers] Disconnect the hook-end from the ring on the brake housing.

**Illustration 23****Disconnect E-Brake Cable from Axle & Brake Assembly...**

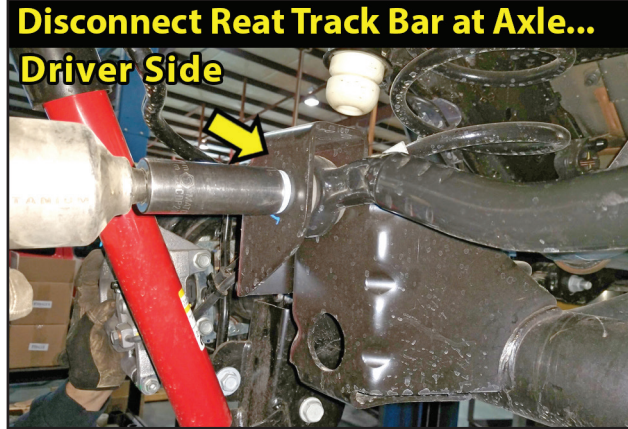
**DISCONNECT REAR TRACK BAR...**

□ 28. [Illustration 24] Disconnect the rear track bar at the Driver Side axle mount. {21mm socket}

**⚠ NOTE:** There is a tab nut on the back of the bolt.

**DISCONNECT REAR SWAY BAR LINK AT AXLE...**

□□ 29. [Illustration 25] Disconnect the sway bar link at the axle mount. {18mm socket / 18mm wrench}

**Illustration 24****Illustration 25****DISCONNECT REAR SHOCKS AT AXLE MOUNT...**

□□ 30. [Illustration 26] Use a 18mm wrench and 18mm socket to remove the lower shock hardware. Retain hardware.

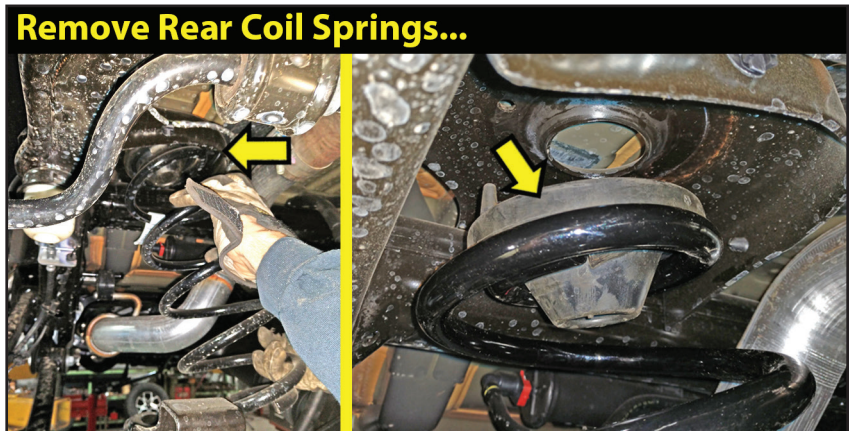
**DISCONNECT REAR SWAY BAR LINK AT SWAY BAR...**

□□ 31. [Illustration 27] Remove the factory hardware from the upper sway bar link at the sway bar. {6mm Allen and an 18mm wrench}

**Illustration 26****Illustration 27****REMOVE REAR COIL SPRINGS...**

□□ 32. [Illustration 28] Lower the axle enough to facilitate removing the rear coil springs. Remove the coil springs. Retain the upper factory coil spring isolator. **⚠ NOTE:** The factory upper spring isolator are Side Specific to properly align with the frame holes. MARK isolators: Driver & Passenger.

Remove the lower coil spring mount pad. There are two (2) plugs connecting the pad to the axle plate. [Plastic Fastener Removal Tool or Flat Head Screwdriver]

**Illustration 28**

**INSTALL REAR BUMP STOP SPACERS...**

□□ 33. [Illustration 29] Locate the (2) SUPERLIFT rear bump stop spacers (#55-07-5800). They are not side specific. Locate Hardware Bag #77-5803. Hardware PER Side: (2) 3/8" x 1-3/4" Bolt, Coarse Thread, (2) 3/8" SAE Washers & (2) 3/8" Flange Nut, Coarse Thread.

Place the SUPERLIFT rear bump stop spacer onto the bump stop mount pad at the axle next to the coil spring mount. Insert the 3/8" SAE washer onto the 3/8" x 1-1/4" bolt. Insert the bolt/washer down through the spacer and into the factory mount. Reach under the bump stop mount pad and above the axle tube to install 3/8" flange nut at the bottom. {9/16 wrench / 9/16 socket} Tighten & torque. [30]

**INSTALL REAR COIL SPRING SPACERS & COILS SPRINGS...**

□□ 34. [Illustration 30] Lower the axle enough to facilitate installing the new rear coil spring spacers.

Locate the (2) SUPERLIFT rear coil springs spacers (55-27-5825). They are not side specific.

Locate Hardware Bag #77-5803. Hardware PER Side: (2) 3/8" x 1-1/4" Bolt, Coarse Thread, (2) 3/8" SAE Washers & (2) 3/8" Flange Nut, Coarse Thread.

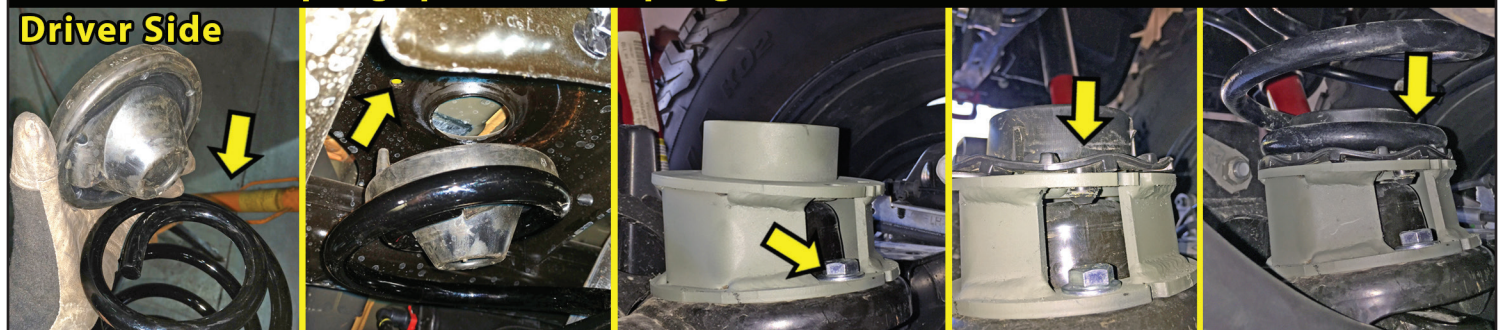
Place the spring spacer onto the axle housing with the taller section toward the rear. Align the spacer bolt holes with the holes from the spring mount pad. Insert the 3/8" washer onto the 3/8" x 1-1/4" Bolt. Insert the bolt through the #55-27-5825 spring spacer and through the spring axle plate. Install the 3/8" flange nut. {9/16 socket / 9/16" wrench}

Locate the lower coil spring mount pad. Install the into position on the #55-27-5825 spring spacer by aligning the pad with the holes in the spacer bracket.

Place the factory spring isolator of the side specific coil spring. **⚠ NOTE:** The factory upper spring isolator are Side Specific.

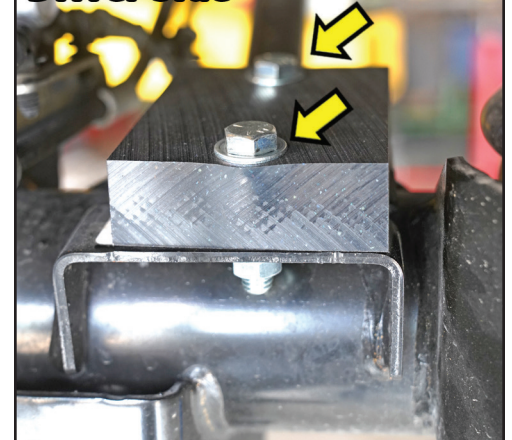
Insert the coil spring and isolator up and into the upper factory mount. Be sure that the coils are indexed so they seat properly then raise the axle enough to hold the coil springs in place.

Rotate the coils so that they seat properly in the lower coil spring mount pad, then raise the axle enough to seat the springs.

**Illustration 30****Install Rear Coil Spring Spacer & Coil Springs with Isolators...****INSTALL REAR SWAY BAR LINKS...**

□□ 35. [Illustration 31] Locate the (2) SUPERLIFT rear sway bar links (#44-17-5050). **⚠ NOTE:** These supplied front sway bar links are longer than the supplied front sway bar links.

Locate Hardware Bag #77-5801 & #77-5801A. Hardware PER Side: (2) 01-60418 - Bushing, Hourglass, (2) #24-5704 - Sleeve, 0.75" OD x 0.50" ID x 1.50" Long, (1) 12mm x 70mm Bolt, Coarse Thread, (2) 12mm Washer & (1) 12mm Nut, Nyloc Coarse Thread.

**Illustration 29****Install Rear Bump Stop...****Driver Side**

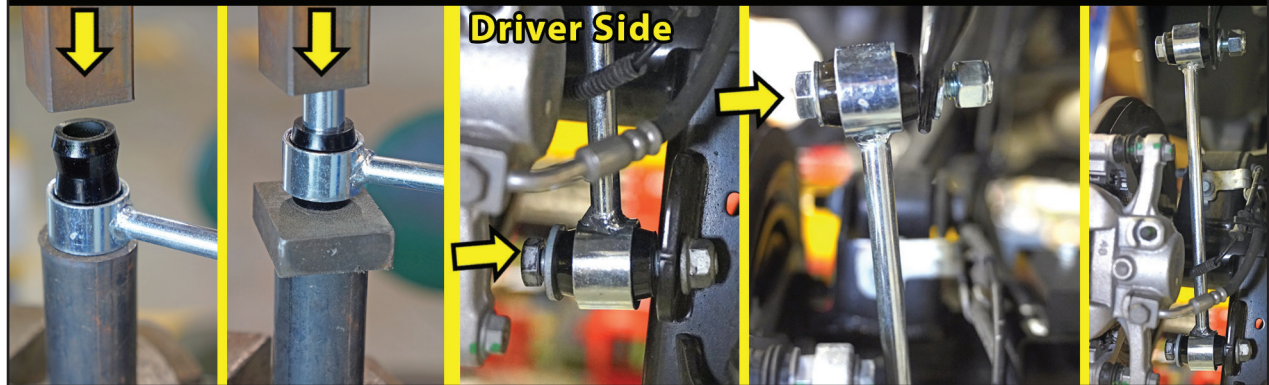
Lightly grease and install/press the hourglass shaped bushing and 0.50" ID sleeve into each end of the sway bar link end.

Use the factory hardware to attach the lower sway bar link mount at the axle mount. {Bolt: 18mm, Nut: 18mm}

Attach 12mm Washer onto the 12mm x 70mm bolt. Insert the bolt pointing inward into the new sway bar link. Continue bolt through sway bar, then attach 12mm washer & 12mm Nyloc nut. Snug tighten only. {19mm wrench / 19mm socket}

### Illustration 31

#### Install Rear Sway Bar Links...



### INSTALL REAR SHOCK SPACER INSTALL...

□□ 36. [Illustration 32] Locate the (2) SUPERLIFT rear shock spacers (#55-14-5825). They are not side specific. Locate Hardware Bag #77-5800. Hardware PER Side: (1) #24-5704 Sleeve, 0.75" OD x 0.50" ID x 1.50" Long, (1) 1/2" x 1-1/2" Bolt, Coarse Thread, (1) 1/2" SAE Washer, (1) 1/2" Flange Nut, Coarse Thread (1) 1/2" x 3-1/4" Bolt, Coarse Thread, (1) 1/2" SAE Washer & (1) 1/2" Nyloc Nut, Coarse Thread.

Place the SUPERLIFT rear shock spacer on the factory shock mount pointing rearward and up. Insert the 1/2" SAE washer onto the 1/2" x 1-1/2" bolt. Insert the bolt/washer up through the bottom hole of the bracket/factory mount. Install 3/8" flange nut. {3/4 wrench / 3/4 socket}

Attach 1/2" SAE Washer onto the 1/2" x 2-3/4" bolt. Insert the bolt pointing inward into the shock spacer/factory shock mount. Attach #24-5704 sleeve. Continue bolt through spacer/shock mount, then attach 1/2" SAE washer & 1/2" Nyloc nut. Snug tighten only. {3/4" wrench / 3/4" socket}

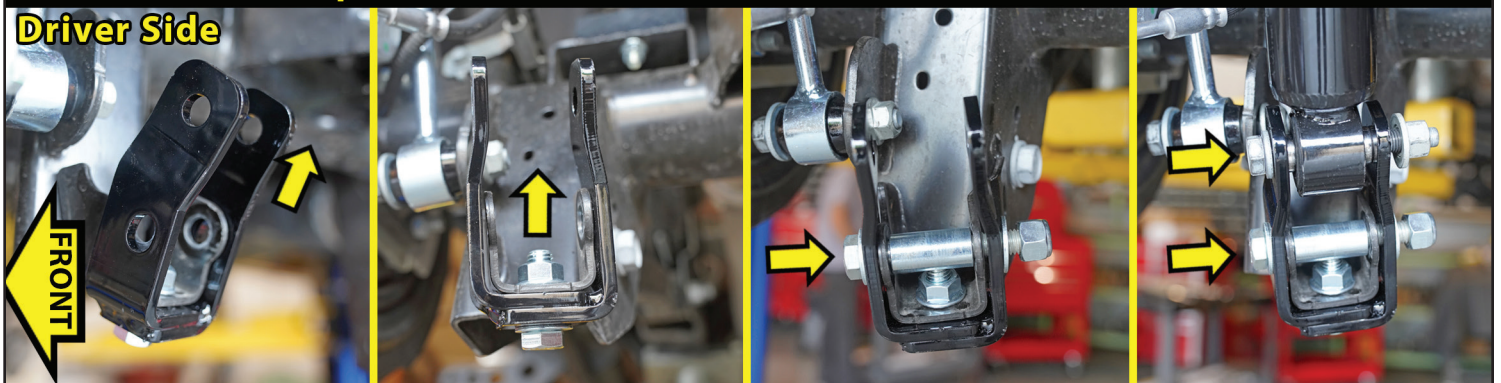
Swing factory shock into place and align with the upper hole of the spacer. Install shock with factory hardware with the bolt pointing inward. Snug tighten only. {18mm wrench \ 18mm socket}

**⚠ NOTE:** Shocks will be tightened completely when the vehicle is set on the ground.

Reattach the rear bumper inner fender liner using the (3) factory retaining bolts. {8mm socket}

### Illustration 32

#### Install Rear Shock Spacer...





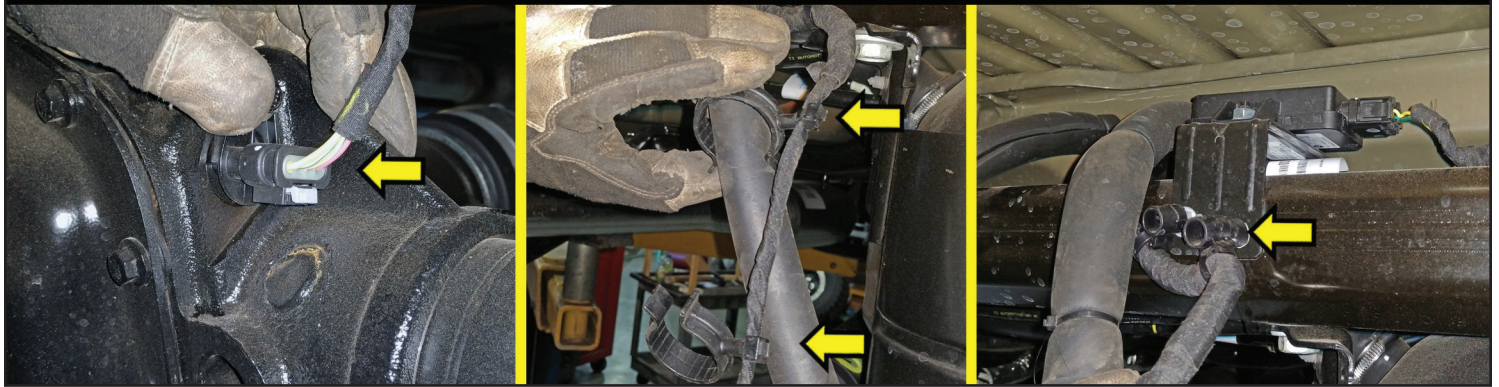
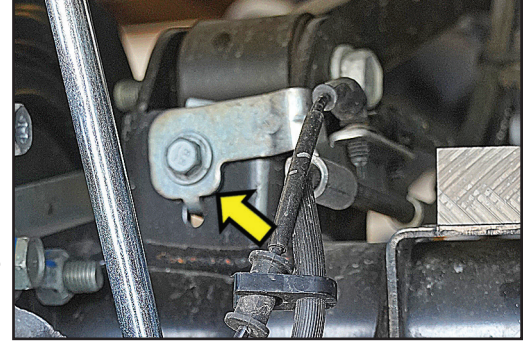
**REATTACH BRAKE LINE BRACKET...**

□□ 37. [Illustration 33] Reattach the brake line bracket to the upper control arm bracket at the axle. [13mm]

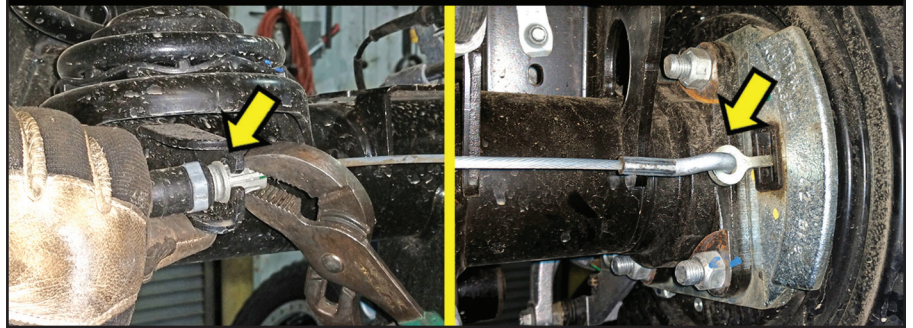
**RUBICONS: RECONNECT REAR LOCKER...**

□ 38. [Illustration 34] **RUBICON Models:** On the rear axle, plug the locker wiring harness back into the differential. Follow the wiring harness up and reclip the wiring harness clips to emergency brake cable.

Continue up the wiring harness and reclip the (2) wiring harness clips back to the frame mount on the Driver Side located on the 'inner' frame rail above the axle.

**Illustration 34****Reconnect Rear Locker...****Illustration 33****Reattach Brake Line Bracket... Driver Side****RECONNECT E-BRAKE TO AXLE HOUSING & BRAKE ASSEMBLY...**

□□ 39. [Illustration 35] Locate the emergency brake cable on the front of the rear axle. Pinch the ears of the aluminum fitting to clip it back into place the axle mount. [Pliers] Reconnect the hook-end to the ring on the brake housing.

**Illustration 35****Reconnect E-Brake Cable to Axle & Brake Assembly...****RECONNECT REAR TRACK BAR...**

□ 40. [Illustration 36] Reconnect the rear track bar at the Driver Side axle mount with factory bolt and tab nut. {21mm socket}

**TECH TIP** A ratchet strap will help position the track bar. Attach the ratchet strap to the track bar upper frame mount & to the lower axle mount. Ratchet the strap to align the track bar with the mount hole.

**Illustration 36****Reconnect Rear Track Bar at Axle... Driver Side**

**REAR TIRES / WHEELS...**

41. [Illustration 37] Install the rear tires & wheels. {Lug Nuts 22mm} (140)

**⚠ WARNING:** When the tires / wheels are installed, always check for and remove any corrosion, dirt, or foreign material on the wheel mounting surface, or anything that contacts the wheel mounting surface (hub, rotor, etc.). Installing wheels without the proper metal-to-metal contact at the wheel mounting surfaces can cause the lug nuts to loosen and the wheel to come off while the vehicle is in motion.

**FINAL CHECKS**

With the vehicle still on jack stands, and the suspension "hanging" at full extension travel, check all components for proper operation and clearances. Pay special attention to clearance between the tires / wheels and brake hoses, ABS wires, locker wiring harness, driveshaft, etc.

Lower the vehicle to the ground.

**HARDWARE TIGHTENING SEQUENCE...**

42.  Front track bar at axle end (125).
- Front shock spacer bracket at factory shock (55).
- Front shock spacer bracket at shock mount (55).
- Front shock spacer bracket at bottom (65).
- Front FOX shock absorber eyes (55).
- Front sway bar links, at frame and at sway bar (75).
- Rear track bar at axle end (125).
- Rear shock spacer bracket at factory shock (55).
- Rear shock spacer bracket at shock mount (55).
- Rear shock spacer bracket at bottom (65).
- Rear FOX shock absorber eyes (55).
- Rear sway bar links, at frame and at sway bar (75).

**CLEARANCE CHECK...**

43. Check all hardware for proper torque specifications.

With the vehicle on the ground, check all components for proper operation and clearances. Pay special attention to the clearance between the tires / wheels, brake hoses, wiring, etc. Check tire/wheel clearance with the fenders/bumper as well as with the steering knuckle.

**WHEEL ALIGNMENT...**

44. Realign vehicle to factory OEM specifications. It is necessary to have a proper and professional wheel alignment performed by a certified alignment technician. Align the vehicle to factory specifications. It is recommended that your vehicle alignment be checked after any off-road driving.

**HEADLIGHTS...**

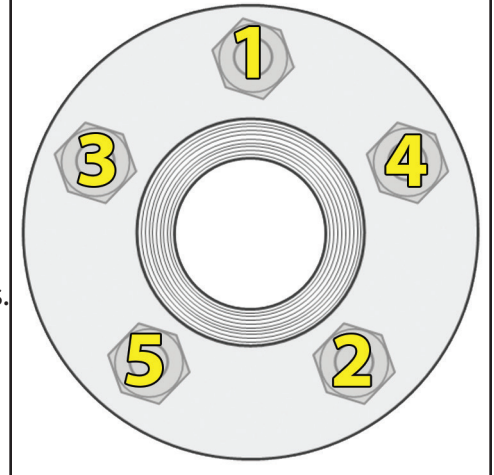
45. Re-adjust headlights to proper setting. In addition to your vehicle alignment, for your safety and others, it is necessary to check and adjust your vehicle head lamps for proper aim and alignment.

**FOUR WHEEL DRIVE...**

46. Activate the four wheel drive system and check for proper engagement.

**Illustration 37****Lug Nut Torque Sequence...**

**Follow the Sequence Below to Torque the Lug Nuts**



**SUPERLIFT WARNING DECAL...**

☐ 47. Install the **WARNING TO DRIVER** decal on the inside of the windshield, or on the dash, within Driver's view.

**IMPORTANT MAINTENANCE INFORMATION**

**⚠ WARNING:** It is the ultimate buyer's responsibility to have all bolts / nuts checked for tightness after the first 100 miles and then every 1000 miles. The steering, suspension and driveline systems, plus wheel alignment should be inspected by a qualified professional mechanic at least every 3000 miles.

**LIMITED LIFETIME WARRANTY / WARNINGS**

Your SUPERLIFT® product is covered by the Limited Warranty explained below that gives you specific legal rights. This limited warranty is the only warranty SUPERLIFT® makes in connection with your product purchase. SUPERLIFT® neither assumes nor authorizes any retailer or other person or entity to assume for it any other obligation or liability in connection with this product or limited warranty.

**SUPERLIFT, LLC, LIMITED LIFETIME WARRANTY**

What is covered? Subject to the terms below, SUPERLIFT® will repair or replace its products found defective in materials or workmanship for so long as the original purchaser owns the vehicle on which the product was originally installed. Your warranter is SUPERLIFT, LLC, doing business as SUPERLIFT® Suspension Systems ("SUPERLIFT®").

What is not covered? Your SUPERLIFT® Limited Warranty does not cover products SUPERLIFT® determines to have been damaged by or subjected to:

- Alteration, modification or failure to maintain.
- Normal wear and tear (bushings, rod ends, etc.). Scratches or defects in product finishes (powder coating, plating, etc.).
- Damage to, or resulting from, the vehicle's electronic stability system, related components or other vehicle systems.
- Racing or other vehicle competitions or contests. Accidents, impact by rocks, trees, obstacles or other aspects of the environment.
- Theft, vandalism or other intentional damage.

Remedy Limited to Repair or Replacement. The exclusive remedy provided hereunder shall, upon SUPERLIFT's inspection and at SUPERLIFT's option, be either repair or replacement of the product covered under this Limited Warranty. Customers requesting warranty consideration should contact SUPERLIFT® by phone (1-800-551-4955) to obtain a Returned Goods Authorization number. All removal, shipping and installation costs are customer's responsibility.

If a replacement part is needed before the SUPERLIFT® part in question can be returned, you must first purchase the replacement part. Then, if the part in question is deemed warrantable, you will be credited / refunded.

**OTHER LIMITATIONS - EXCLUSION OF DAMAGES - YOUR RIGHTS UNDER STATE LAW**

- Neither SUPERLIFT® nor your independent SUPERLIFT® dealer are responsible for any time loss, rental costs, or for any incidental, consequential or other damages you may have.
- This Limited Warranty gives you specific rights, and this is the only warranty SUPERLIFT® makes in connection with your product purchase. You may also have other rights that vary from state to state. For example, while all implied warranties are disclaimed herein, any implied warranty required by law is limited to the terms of our Limited Lifetime Warranty as described above. Some states do not allow limitations of how long an implied warranty lasts and / or do not allow the exclusion or limitation of incidental or consequential damages, so the limitations and exclusions herein may not apply to you. SUPERLIFT® neither assumes nor authorizes any retailer or other person or entity to assume for it any other obligation or liability in connection with this product or Limited Warranty.

**IMPORTANT PRODUCT USE AND SAFETY INFORMATION / WARNINGS**

**⚠️ WARNING:** As a general rule, the taller a vehicle is, the easier it will roll over. Offset, as much as possible, what is lost in rollover resistance by increasing tire track width. In other words, go “wide” as you go “tall”; always use as wide a tire and wheel combination as feasible to enhance vehicle stability. We strongly recommend, because of rollover possibility, that the vehicle be equipped with a functional roll bar and cage system. Seat belts and shoulder harnesses should be worn at all times. Avoid situations where a side rollover may occur.

Generally, braking performance and capabilities are decreased when significantly larger / heavier tires and wheels are used. Take this into consideration while driving. Also, changing axle gear ratios or using tires that are taller or shorter than factory height will cause an erroneous speedometer reading. On vehicles equipped with an electronic speedometer, the speed signal impacts other important functions as well. Speedometer recalibration for both mechanical and electronic types is highly recommended.

Do not add, alter, or fabricate any factory or aftermarket parts to increase vehicle height over the intended height of the SUPERLIFT® product purchased. Mixing component brands is not recommended.

**WE WANT TO SEE YOUR RIDE...**

Grab photos of your SUPERLIFT Equipped truck in various poses and in action.

Email pictures to us at [sales@superlift.com](mailto:sales@superlift.com)

Tag us on **Facebook:** @superlift suspension systems

Tag us on **Instagram:** #superlift, #superliftsuspension, #superliftequipped

**THANKS For Choosing SUPERLIFT...**

For questions, technical support and warranty issues relating to this SUPERLIFT products, please contact SUPERLIFT directly.

**SUPERLIFT SUSPENSION**  
**300 Huey Lenard Loop Rd.**  
**West Monroe, Louisiana 71292**  
**Phone: (318) 397-3000**  
**Sales / Tech: (800) 551-4955**  
**Fax: (318) 397-3040**  
**SUPERLIFT.COM**