

STEP 1 – PRIOR TO INSTALLATION

- A) Bushwacker only** approves installing the flares according to these written instructions with the hardware provided. **WARNING:** Failure to install according to these instructions will invalidate the warranty. This includes, but is not limited to using alternative installation methods, hardware, or materials. **DO NOT USE:** Loctite, SuperGlue, or similar products on the hardware or the flares.
- B) Fit:** Verify the fit of the flares to vehicle. (Some filing, sanding, or cutting may be necessary to ensure proper fit).
- C) Painting:** (Optional) if paint is desired it must be done prior to installing flares on vehicle. Clean outer surface with a good grade degreaser. **DO NOT USE LACQUER THINNER OR ENAMEL REDUCER AS A DEGREASER.** Wipe outer surface thoroughly with a tack rag prior to paint. Application of plastic adhesion promoter for ABS plastic as per your paint system manufacturer's recommendations is required. Paint flares using a high quality enamel, or polyurethane automotive paint. If painting edge trim (not recommended), use a flex additive.
- D) Performance:** Using larger Tires may increase the area required to turn the vehicle. Some Tire/Rim combinations may require lowering bump stops and or installing steering stops to prevent tire from contacting flare.
- E) Exhaust System:** Modifications may be necessary to maintain a minimum 4" clearance between flares and exhaust pipes. (Exhaust gases should not vent directly onto flares)
- F) Metal Protection:** All exposed fasteners and bare metal should be treated with rust resistant paint **BEFORE** installing flares. Spray inner fender wells with undercoating **AFTER** flare attachments have been completed.
- G) Decals:** Flares may interfere with existing decals on vehicle. If you wish, remove decals prior to installation of flares.

Jeep® Flat Style Fender Flares Rear Pair

Set Part #10056-07

Rev-7 6/4/15

For complete fitment info visit : www.bushwacker.com










TOOLS FOR EASY INSTALLATION:

- Utility Knife
- #2 Phillips Screwdriver
- Socket Wrench
- 5/16" & 11/32" Sockets
- 5/16" Wrench
- 6" Socket Extension
- Scratch Awl
- Soft Wiping Cloth/Shop Towels
- Pry bar/Claw Hammer
- Safety Glasses
- Helper/Partner

LIMITED LIFETIME WARRANTY AGAINST ANY MANUFACTURING DEFECTS

- To claim a warranty, you must provide Proof of Purchase.

Included in Hardware Kit:

- | | | | | | | | | | | | | | |
|----|---|----|---|----|---|----|---|----|--|----|---|----|---|
| 1. |  | 2. |  | 3. |  | 4. |  | 5. |  | 6. |  | 7. |  |
| | AD1-0008,
ALCOHOL PREP
PAD,
2 pcs | | CL1-0022,
#10 "U" Clip,
12 pcs | | SW1-0056,
#8 x 3/4"
PH Screw,
12 pcs | | NU1-0010,
M5 x.8 Serrated
Flange Hex Nut,
10 pcs | | SW1-0053,
M5-.8 x 25mm
Philps Mach Screw,
16 pcs | | SP1-0011,
1/4" x 5/8" x .187"
Neo Black Spacer,
16 pcs | | WA1-0003,
#10 SAE
1/2" Flat Washer,
16 pcs |
| 8. |  | 9. |  | | | | | | | | | | |
| | GP1-0006,
Wiper Style (2-
tape) Edge Trim,
125 inches | | ET1-0002,
Edge Trim Tool,
1 pc | | | | | | | | | | |

Component List

2 REAR FLARES



4 REAR BRACKETS



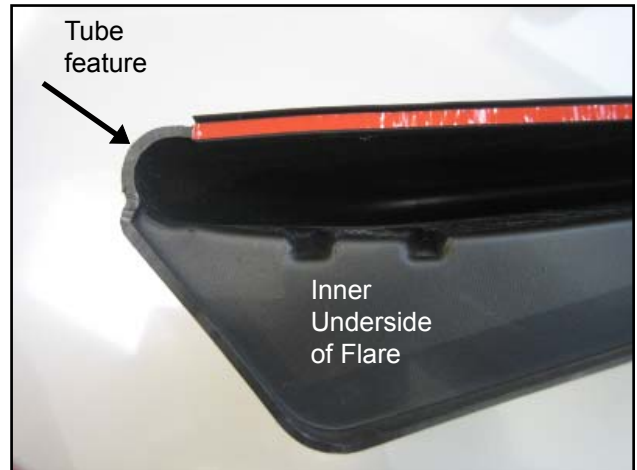
NOTE: Edge trim (GP1-0006) will be installed on the FLARES only, not the inner pieces.

Note: The edge trim for this application is double-tape edge trim so special care needs to be taken while installing. There is red vinyl backing on the inside of the edge trim where it will adhere to the flare and red vinyl backing on the outside where it will adhere to the vehicle. The following steps only concern where the edge trim will adhere to the flare. Additional edge trim installation instructions are included during the rest of the installation process.

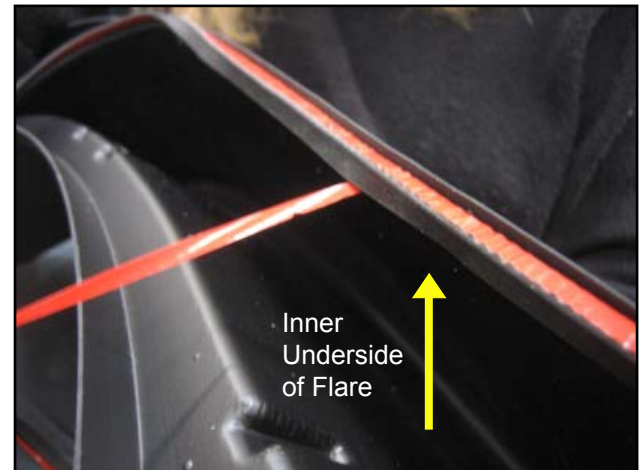
A. Peel two to three inches of red vinyl backing away from edge trim tape. Applying the adhesive side of the edge trim to the inner side of the flare, affix the edge trim to the top edge of the flare (the portion that comes in contact with the vehicle). Stop at tube feature of flare. **Picture 1 for tube feature reference**

B. Press edge trim into place along the top edge of the flare in one-foot increments, pulling red vinyl backing free as you continue to work your way around the top edge of the flare. **Picture 2 for additional edge trim orientation**

Picture 1



Picture 2



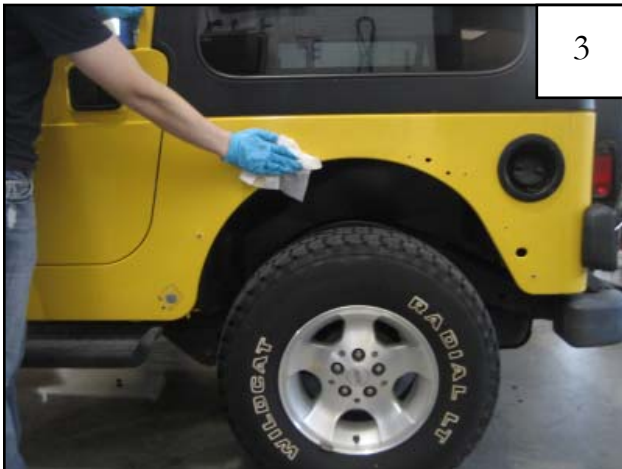
Rear Flare Installation Procedures (Driver's Side):



1 Remove the factory installed fender flare screws with a 5/16" socket wrench. (8 locations)



2 Using a pry bar or claw hammer, remove the christmas tree fasteners then remove/loosen the rear wheel well skirting. Save fasteners for reinstallation.



3 Thoroughly clean the exposed metal fender with a damp cloth then dry.



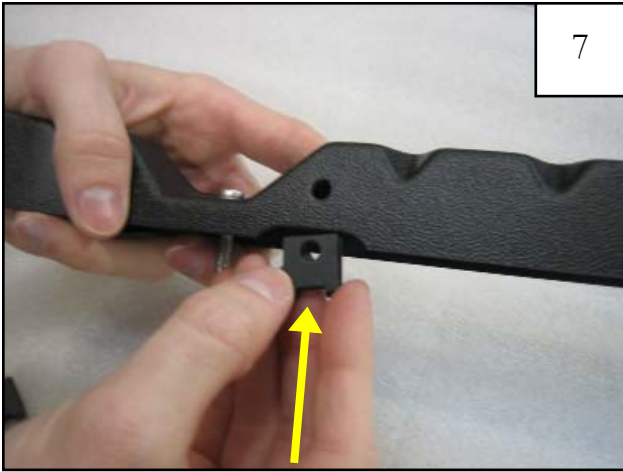
4 Locate the new flat flare rear inner pieces. The driver side rear inner pieces are marked D3 and D4. The passenger side rear inner pieces are marked P3 and P4.



5 Put an M5-8 machine screw (SW1-0053) and washer (WA1-0003) through the top holes of the inner pieces and secure with a 1/4" rubber spacer (SP1-0011) on the underside of the inner piece.



6 Push the rubber spacer and M5-8 machine screw together until they are both tight against the inner piece. Spacer has been lightened in picture for visibility.



7

Install a speed clip at each clip location on the inner pieces, centering them on the predilled holes. (6 locations) *NOTE: Clips slide out of place easily. Try pinching the metal tightly onto the inner piece with pliers.*



8

Install inner piece D3 (and P3 for passenger side installation) by lining up the M5-.8 machine screws (SW1-0053) with the factory hole locations and push into place.



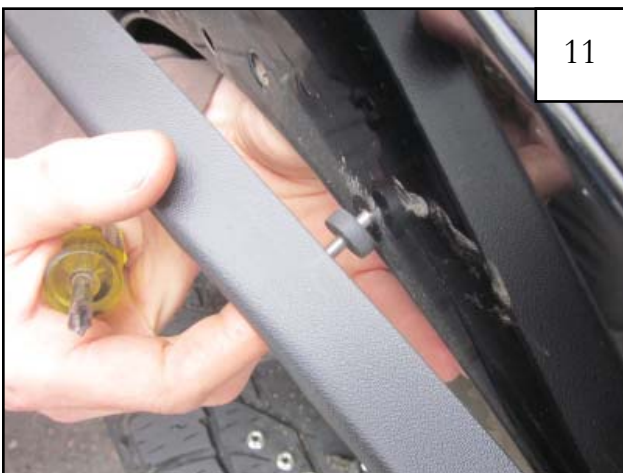
9

Attach flange nuts (NU1-0010) into the threads on the M5-.8 machine screws (SW1-0053) and hand tighten.



10

NOTE: The two bolts on the bottom front of the wheel well do not require nuts.



11

Install inner piece D4 (and P4 for passenger side installation) to the sheet metal by lining up the M5-.8 machine screws (SW1-0053) with the factory hole locations and push them into place.



12

While holding the inner piece in place, use a #2 Phillips bit to tighten the M5-.8 machine screws (SW1-0053) into the flange nuts (NU1-0010).



13

Attach flange nuts (NU1-0010) to the threads on the M5-8 machine screws (SW1-0053) and hand tighten.



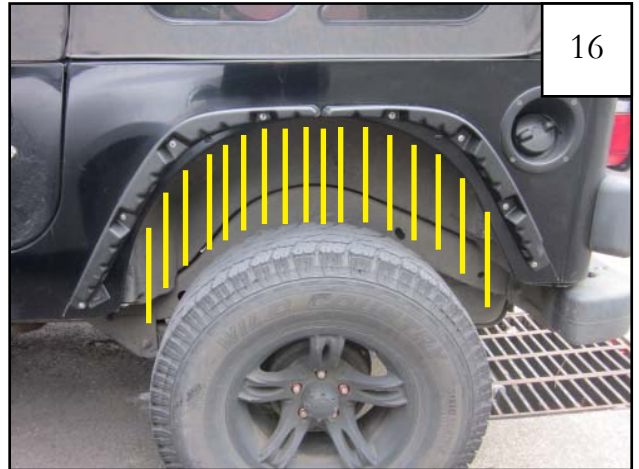
14

NOTE: The bolt at the lower rear of the wheel well does not require a nut.



15

Use a 5/16" wrench for the flange nuts and a #2 Phillips bit for the machine screws and fully tighten inner piece to the fender.



16

Reinstall the rear wheel well skirting using the christmas tree fasteners removed and saved.



17

Before installing the outer flare, make sure that the speed clips on the inner pieces are centered over the predrilled holes.



18

Use one supplied alcohol prep pad to clean the *sheet metal* above each inner piece in preparation to tape the edge trim to the sheet metal. *This must be done for proper flare installation.*



19

Peel back 1-2" of red liner on each end of the edge trim and bend toward the outside of the flare.



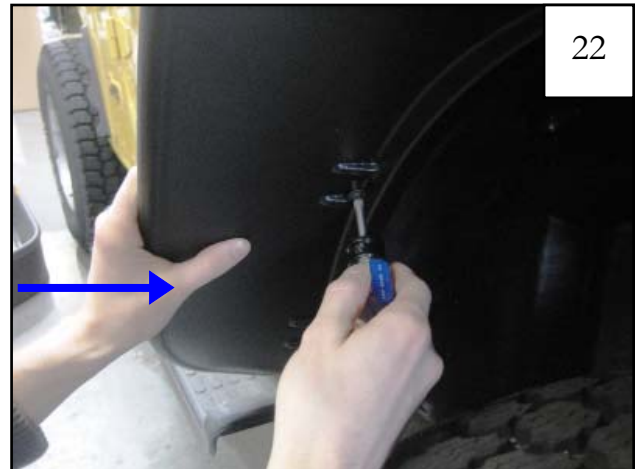
20

Place the outer flare over the inner pieces and push until snug against the vehicle surface.



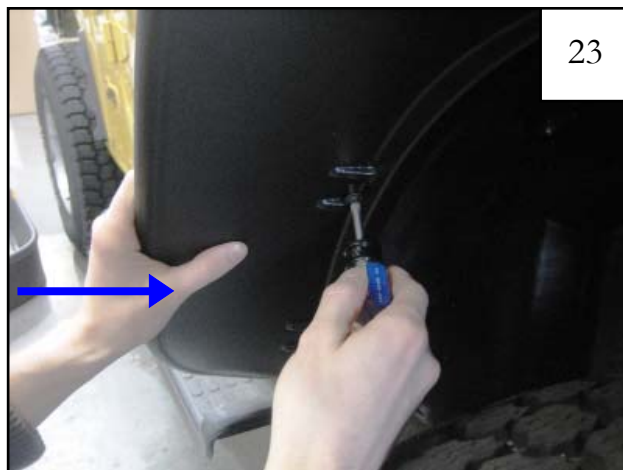
21

Use a scratch awl (or another pointed tool) to line up the speed clips with the outer flare holes (6 locations). If needed, use a flashlight to better locate the speed clips.



22

Hold flare in place on fender and start a #8 pan head screw (SW1-0056) into each hole location and through the speed clip (CL1-0022) on inner structure (6 locations). Do not tighten.



23

Tighten the #8 pan head screws by *firmly* pressing the flare toward the vehicle while tightening the screws.



24

Peel outer tape liner from the double-taped edge trim. Push down *lightly* on the fender flare to create a small gap between the sheet metal and the edge trim. This makes it easier to pull the red liner.



Firmly press the flare toward the vehicle for 10 seconds to adhere the tape to the vehicle surface. Repeat this process moving along the entire length of the flare. The vehicle surface temperature must be between 65-110° F for proper adhesion. Allow 24 hours for full adhesion.



Starting at one end, use the flat edge of the supplied edge trim tool to further adhere the edge trim to the vehicle surface. Slide the tool along the edge trim while pressing it in toward the vehicle surface.



Use the hooked end of the edge trim tool to check for full adhesion. Do this by sliding it along the top of the edge trim to visually verify that the tape is adhered to the vehicle surface. Repeat step 63 if the tape is not fully adhered to the vehicle surface.



Completed rear driver's side flare installation.