



STEP 1 – PRIOR TO INSTALLATION

- A)** Bushwacker® only approves installing the trail armor according to these written instructions with the hardware provided. **WARNING:** Failure to install according to these instructions will invalidate the warranty. This includes, but is not limited to using alternative installation methods, hardware, or materials. **DO NOT USE:** Loctite, SuperGlue, or similar products on the hardware or the trail armor.
- B) Fit:** Verify the fit of the trail armor to vehicle. (Some filing, sanding, or cutting may be necessary to ensure proper fit).
- C) Painting:** (Optional) if paint is desired it must be done prior to installing trail armor on the vehicle. Clean outer surface with a good grade degreaser. **DO NOT USE LACQUER THINNER OR ENAMEL REDUCER AS A DEGREASER.** Wipe outer surface thoroughly with a tack rag prior to paint. Application of plastic adhesion promoter for TPO plastic as per your paint system manufacturer's recommendations is required. Paint trail armor using a high quality enamel, or polyurethane automotive paint.
- D) Exhaust System:** Modifications may be necessary to maintain a minimum 4" clearance between trail armor and exhaust pipes. (Exhaust gases should not vent directly onto trail armor)
- E) Metal Protection:** All exposed fasteners and bare metal should be treated with rust resistant paint **BEFORE** installing trail armor.
- F) Decals:** Trail Armor may interfere with existing decals on vehicle. If you wish, remove decals prior to installation of trail armor.

Ford F150 Extended Cab Trail Armor® Rocker Panel & Sill Plate Combo Set

Set Part #14071

BW14071 Rev-0 03-12-2019

For complete fitment info visit: www.bushwacker.com

TOOLS FOR EASY INSTALLATION:

- Cleaning Cloth
- Trim Fastener Removal Tool
- Drill w/ 1/4" Bit
- Phillips Head Screwdriver





The material that your product is made from can be recycled. Please also consider recycling the packaging that your product came in.



LIMITED LIFETIME WARRANTY AGAINST ANY MANUFACTURING DEFECTS

- To claim a warranty, you must provide Proof of Purchase.

Included in Hardware Kit:

- | | | | |
|----|---|----|---|
| 1. |  | 2. |  |
| | AD1-0008,
ALCOHOL PREP
PAD, | | |
| | ALCOHOL
PREP
PAD | | SCRIVET
FASTENER |
| | 8 pcs. | | 24 pcs. |

Pre-Installation Procedure (Driver's Side)



Open both front and rear door. Note the position of weatherstrip along front door edge.



Lift up the weatherstrip along the rocker panel to reveal fasteners.



Carefully remove weatherstrip fasteners and completely remove weatherstrip from vehicle and set aside. **NOTE:** Use caution not to damage weatherstrip as it will be reinstalled in a later step..

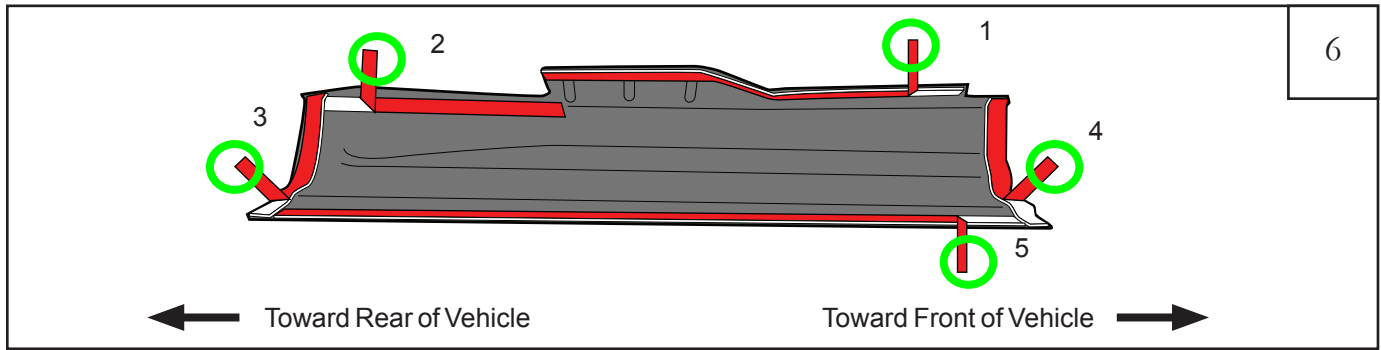


With the weatherstrip completely removed, test fit Trail Armor pieces in place on vehicle.



Remove Tail Armor and clean all dirt and debris from vehicle then use supplied alcohol wipes where parts will mount.

Rear Side Panel Installation Procedure (Driver's Side)



Peel back 2" of tape liner from each flange. Using a marker, number the tape tabs as shown:

- 1: Tape tab 1.
- 2: Tape tab 2.
- 3: Tape tab 3.
- 4: Tape tab 4.
- 5: Tape tab 5.



Place part on vehicle, making sure to line up edges of part with edges of vehicle. Ensure that all tape tabs are accessible. Firmly press on exposed areas of tape to tack Trail Armor in place.



Pull tape liner tab 1.



Pull tape liner tab 2.



Pull tape liner tab 3.



Pull tape liner tab 4.

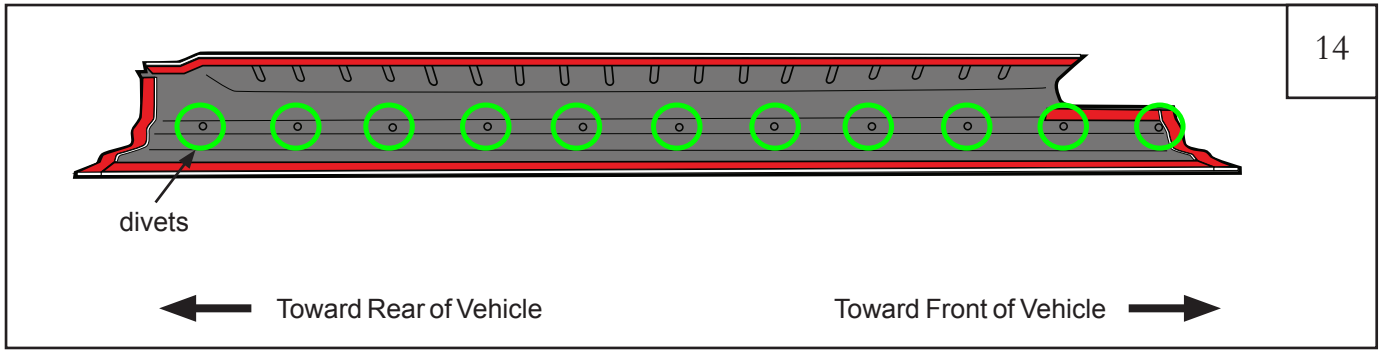


Pull tape liner tab 5.



Once all tape liners are peeled, press down on entire length of part applying strong force to taped areas.
NOTE: The tape reaches maximum adhesive bond after 24 hours of contact. Do not wash vehicle for 24 hours.

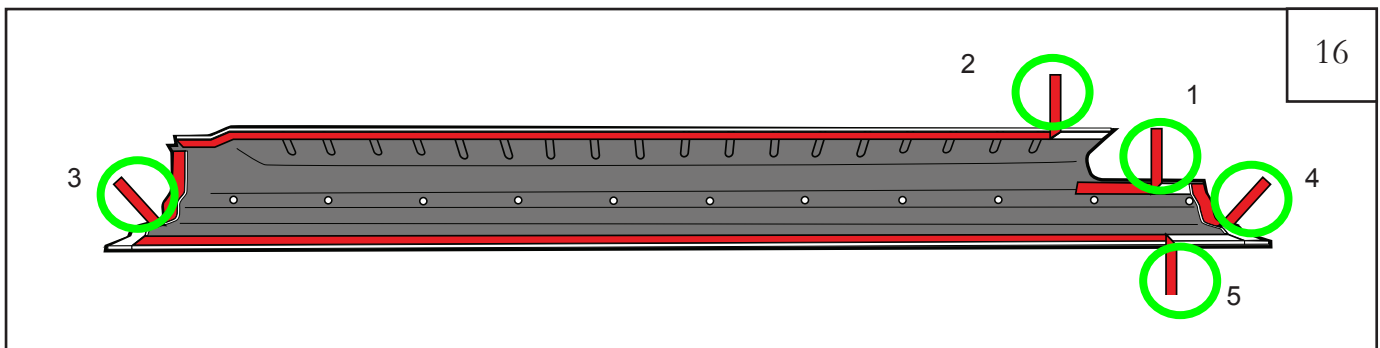
Front Side Panel Installation Procedure (Driver's Side)



Notice the divets shown above.



Use a drill with a 1/4" bit to drill out all divets shown above.



Peel back 2" of tape liner from each flange. Using a marker, number the tape tabs as shown:

- 1: Tape tab removed in step 22.
- 2: Tape tab removed in step 23.
- 3: Tape tab removed in step 24.
- 4: Tape tab removed in step 25. NOTE: This tab must hang down as shown for removal.
- 5: Tape tab removed in step 26.



Place part on vehicle, making sure to line up edges of part with edges of vehicle and the edge of the rear Trail Armor. Note that the holes drilled out in **Step 15** will align with the holes that were holding the weatherstrip attached.



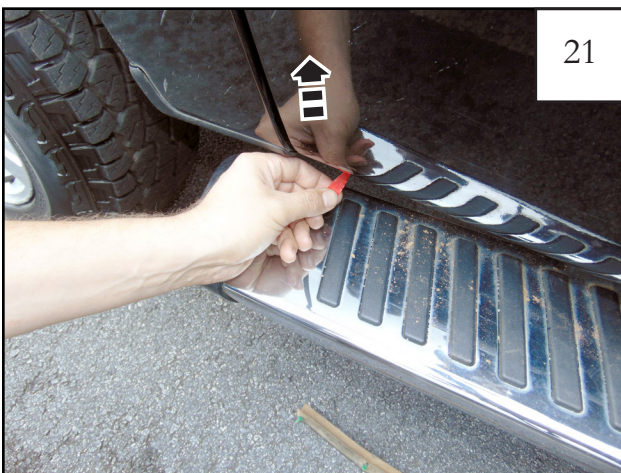
Pull tape liner tab 1.



Pull tape liner tab 2.



Pull tape liner tab 3.



Pull tape liner tab 4. **NOTE:** It may be necessary to partially close the front door to reach tape tab.



Pull tape liner tab 5.



Once all tape liners are peeled, press down on entire length of part applying strong force to taped areas. **NOTE:** The tape reaches maximum adhesive bond after 24 hours of contact. Do not wash vehicle for 24 hours.



Reinstall weatherstripping. Insert replacement fasteners through weatherstrip, Trail Armor, and into rocker panel holes. **NOTE:** Do not over tighten.

Repeat steps 1-24 for passenger side of truck